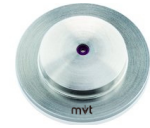


# Rubynozzle 6645



## Properties and advantages

- Long lifetime
- Constant jet quality
- Accurate cutting accuracy
- Narrow cutting width
- High cutting performance
- Good value for money
- Swiss Quality

## Applications

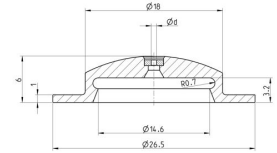
- Paper industry
- Industrial cleaning
- corrugated cardboard

## Description

The high-performance nozzles for paper-jet cutting from mvt AG are characterized by their durability, efficiency and quality. The extensive range of nozzles offers the right type for most commercially available paper cutting machines. Especially the ruby insert used for this purpose guarantees a long service life and a constant jet quality.

ART. NO. (1)

31962.\_ \_



CHARACTERISTICS	TYPE
	6645
Operating pressure (bar)	max. 80
Operating temp. (°C)	max. 150°

## Performance

ART. NO.	NOZZLE SIZE IN US GAL/MIN AT 40 PSI	NOZZLE ØD MM	PRESSURE IN PSI / BAR							
			psi 145	psi 290	psi 435	psi 580	psi 725	psi 870	psi 1015	psi 1160
			bar 10	bar 20	bar 30	bar 40	bar 50	bar 60	bar 70	bar 80
			FLOW RATE IN L/MIN							
31962.0600	0071	0.60	0.515	0.728	0.892	1.030	1.151	1.261	1.361	1.455
31962.0700	0096	0.70	0.701	0.991	1.214	1.401	1.567	1.716	1.853	1.980
31962.0800	0126	0.80	0.916	1.295	1.585	1.830	2.046	2.241	2.420	2.587
31962.0900	0160	0.90	1.159	1.639	2.007	2.317	2.590	2.836	3.063	3.274
31962.1000	0197	1.00	1.431	2.023	2.477	2.860	3.197	3.501	3.781	4.042
31962.1100	0238	1.10	1.731	2.448	2.997	3.461	3.868	4.237	4.575	4.890
31962.1200	0283	1.20	2.060	2.913	3.567	4.118	4.604	5.042	5.445	5.820
31962.1400	0386	1.40	2.804	3.965	4.855	5.606	6.266	6.863	7.411	7.922
31962.1500	0443	1.50	3.219	4.552	5.574	6.435	7.193	7.878	8.508	9.094
31962.1600	0504	1.60	3.663	5.179	6.342	7.322	8.184	8.964	9.680	10.347