

Ceramic nozzle 972-cer



Properties and advantages

- Long lifetime
- Constant jet quality
- High-power and focused water jet
- Needle jet with high energy density
- Special coating
- Swiss Quality

Applications

- Automobile and aircraft industry
- Construction industry
- Concrete demolition
- Mechanical and apparatus engineering
- Surface treatment
- Offshore deployment
- Cement and concrete industry
- Surface cleaning
- Industrial cleaning
- Spray bars

Description

The high-performance ceramic nozzle type 972-cer was designed for multiple tools such as spray bars or nozzle bars, but can also be used as a nozzle insert in rotary nozzles or for hand lances. The mvt ceramic nozzles have a nozzle factor of 0.95. **A big advantage is that the ceramic insert cannot burst and the durability is also quite impressive and are far superior to sapphire.** According to our experience, a service life of up to 150 hours can be achieved with a constant operating pressure of 2500 bar, as long as all components such as filters, connections and water are 100% OK.

The nozzle neck is manufactured very precisely and has a perfect concentricity with the sealing edge. The 56° sealing edge has no roundings or double angles and a greater wall thickness compared to conventional nozzles. Therefore, there can be no deformation of the nozzle body at the sealing edge.

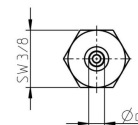
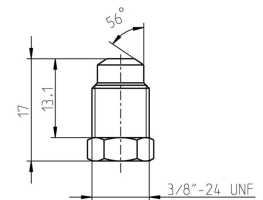
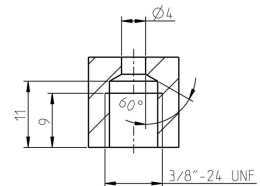
The heart of the nozzle, the ceramic insert, is completely manufactured by mvt AG, which guarantees a uniform and high quality. All ceramic inserts are checked for scratches, cracks and flow.

This product is compatible with the following brands or products:

- Series 3546/3024
- OS6™
- UHP-X

ART. NO. (1)

31250._ _



CHARACTERISTICS	TYPE
	972-CER
Operating pressure (bar)	max. 3000
Operating temp. (°C)	max. 150°
Tightening torque (Nm)	max. 40

Performance

ART. NO.	NOZZLE SIZE IN US GAL/MIN AT 40 PSI	NOZZLE ØD MM	PRESSURE IN PSI / BAR						
			psi	psi	psi	psi	psi	psi	psi
			14500	21750	25375	29000	31900	36250	43500
			bar	bar	bar	bar	bar	bar	bar
			FLOW RATE IN L/MIN						
			1000	1500	1750	2000	2200	2500	3000
31250.0150	0006	0.15	0.442	0.537	0.578	0.616	0.644	0.684	0.744
31250.0200	0011	0.20	0.786	0.955	1.028	1.095	1.145	1.215	1.322
31250.0250	0017	0.25	1.228	1.492	1.606	1.710	1.789	1.899	2.066
31250.0300	0024	0.30	1.769	2.149	2.312	2.463	2.576	2.734	2.975
31250.0350	0033	0.35	2.407	2.925	3.147	3.352	3.506	3.722	4.050
31250.0400	0043	0.40	3.144	3.820	4.111	4.379	4.579	4.861	5.289
31250.0450	0055	0.45	3.979	4.835	5.203	5.542	5.795	6.152	6.694
31250.0500	0067	0.50	4.913	5.969	6.423	6.841	7.155	7.595	8.264
31250.0550	0082	0.55	5.944	7.223	7.772	8.278	8.657	9.190	10.000

Instructions

When manually operating high pressure guns and lances the repulsive force on the axis should not exceed 250N! If the repulsive force exceeds 150N, a support / body armour is required!

	< 150 N
	< 250 N
	> 250 N