



## PIPE & TUBE

# PRODUCT CATALOG

# WHO WE ARE, WHO WE SERVE

At Tri Tool, we cut through complexity and provide innovative pipe and tube solutions to solve our customers' toughest challenges. For over 50 years, we have partnered with companies in major industrial markets providing custom-engineered solutions, weld-prep products, and expert field services, repairs and rentals.

## Government / Shipyard

When mission readiness is mission critical, trust Tri Tool to deliver custom engineering and precision machining solutions to improve shipyard efficiencies and acquisition.



## Aerospace

In the fast-paced aerospace industry, our precision custom solutions and precise tube cutting products help you increase productivity, reduce downtime, and innovate faster.



## High Purity

For high-purity environments, Tri Tool offers machining solutions and field services that accelerate fabrication, eliminate contamination, and generate precise, repeatable results.



## Power Generation / Nuclear

Performing within today's shorter lead times and challenging nuclear conditions, Tri Tool provides expert power plant maintenance and outage services to keep plants performing and profitable.

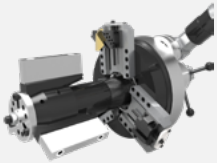


## Oil & Gas

Tri Tool works closely with leading oil, gas, offshore and pipeline contractors to deliver rapid-response field services and produce the most rugged, dependable piping machines.

# TOOLING OVERVIEW

As a global leader and partner to the most well-known industrial companies and contractors, Tri Tool manufactures the most rugged, reliable, and precise piping and tubing machines that give our customers the cutting edge.



## END PREP BEVELING

- 200 Series ID mount pipe beveling equipment (0.610" - 36.000" mounting)
- Supports beveling, counterboring, flange facing or single point machining



## TUBE FACING / SQUARING

- 300 Series tube squaring machines (0.125" - 8.625" OD squaring range)
- Provides perfectly square ends on cut lengths of tube and fittings



## TUBE SEVERING

- Rapid set-up 500 Series severing equipment (0.250" - 16.000" OD range)
- Ideal solution for high-volume tube and pipe severing



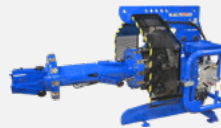
## CUTTING & BEVELING

- 600 Series clamshells for any application, pipe size or material
- Supports both in-line and end-prep versatility with cold cutting



## BOILER & HEAT EXCHANGER TUBE FACING

- Specialized for boiler machining operations and heat exchanger construction and repairs
- Air and electric motor options for pipe / tube sizes (0.500" - 4.500")



## PIPE FACING - OFFSHORE

- High-mobility pipe facing machine (3.50" - 48" pipe tube size)
- Increases cut speed by 10X to boost productivity, revenue, and save costs



## HYDRAULIC POWER UNITS

- Variable volume, pressure responsive, reversible hydraulic power supply
- Power units available for all end prep machines, clamshells, and pipe facing machines



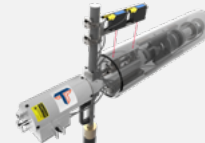
## PIPE FACING - LANDLINE

- Easily integrates with existing fleet of excavators, boom trucks or stationary applications
- Versatile, dependable solution for midstream pipeline operations (20.809" - 48.000")



## LINE-UP CLAMPS

- Internal line up clamps for pipeline construction, both onshore and offshore
- Enables different configurations to fit a wide variety of applications



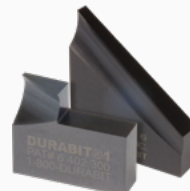
## LASER DIMENSIONING SYSTEM

- Measures open-ended pipes using laser sensors OD, ID, and wall thickness
- Accurately and rapidly scans pipe ends for pipe / tube sizes



## WALHONDE - PIPE CLAMPS

- Precision, light-to-heavy duty pipe alignment with OD mount PP or PE
- Keeps pipes safe and secure from movement, available to buy or rent



## CONSUMABLES / BITS

- Common DURABIT tooling for 200 & 300 series machines
- Coating provides durability and longer life over non-coated tool bits

# END PREP BEVELING

Portable ID mount pipe beveling equipment to support beveling, counterboring, flange facing or single point machining.

**NEW!**


## SUREFIRE 4

**Features:**

- 2" - 4" pipe, Sch 5 / Sch 10
- Self-centering radiused pads prevent distortion of thin wall pipe
- Air / Electric motor option

**NEW!**


## SUREFIRE 8

**Features:**

- 3" - 8" pipe, Sch 5 / Sch 10
- Self-centering radiused pads prevent distortion of thin wall pipe
- Air / Electric motor option



## 201B

**Features:**

- 0.250" - 2.000" (6.4 mm - 50.9 mm) range
- OD Saddle Mount Machine
- Low Profile, In-Line for boiler tubes
- Air / Electric motor options



## 202TS

**Features:**

- 0.500" - 2.000" (12.7 mm - 50.8 mm) range
- ID Mount Machine
- Pneumatic self centering / Self-squaring Mandrel and adjustable cut depth stops
- Air motor options



## 204B

**Features:**

- 0.610" - 4.500" (15.5 mm - 114.3 mm) range
- ID Mount Machine
- Self-centering / Self-squaring Mandrel
- Air / Electric motor options



## 208B

**Features:**

- 1.503" - 8.625" (38.1 mm - 219.0 mm) range
- ID Mount Machine
- Self-centering / Self-squaring Mandrel
- Air / Electric / Hydraulic motor options

# END PREP BEVELING

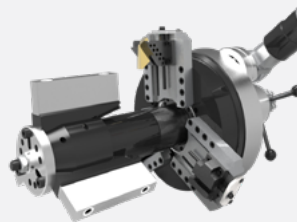
Portable ID mount pipe beveling equipment to support beveling, counterboring, flange facing or single point machining.



## 214B

### Features:

- 3.310" - 14.000" (84.0 mm - 355.6 mm) range
- ID Mount Machine
- Self-centering / Self-squaring Mandrel
- Air / Electric / Hydraulic motor options



## 216B

### Features:

- 5.170" - 32.000" (131.3 mm - 735.3 mm) range
- ID Mount Machine
- Self-centering / Self-squaring Mandrel
- Air / Hydraulic motor options



## 224B

### Features:

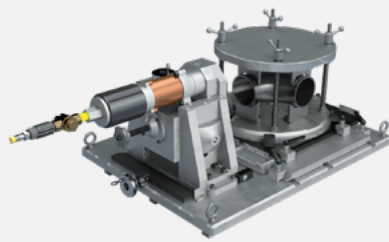
- 6.813" - 42.000" (173.0 mm - 1066.8 mm) range
- ID Mount Machine
- Self-centering / Self-squaring Mandrel
- Air / Hydraulic motor options



## BOILERMASTER

### Features:

- 0.610" - 4.500" (15.5 mm - 114.3 mm) range
- ID Mount machine
- Specialized for boiler applications
- Air / Electric motor options



## 536 FITTING MACHINE

### Features:

- 1.315" - 6.625" (33.4 mm - 168.3 mm) range
- OD Mount machine
- Bench Mounted. Turn Table. XYZ Adjustment, Mitters
- Air motor options



## COUPONMASTER

### Features:

- 1.503" - 8.625" (38.1 mm - 219.0 mm) range
- ID Mount Machine
- Specialized for welding coupons
- Air / Electric / Hydraulic motor options

## 200 SERIES TECH SPECS AT A GLANCE

Model	Pipe / Tube Size	Wall Thickness	Drive Options	Application / Usage
Surefire 4	2.000" - 4.000" (50.8 mm - 101.6 mm)	**0.120" (3.00 mm) max	Air 110V Electric 220V Electric	Faces, bevels pipe and tube
Surefire 8	3.000" - 8.000" (76.2 mm - 203.2 mm)	**0.148" (3.75 mm) max	Air 110V Electric 220V Electric	
201BA	*0.250" - 2.000" (* 6.4 mm - 50.8 mm)	**0.400" (10.2 mm) max	Air 110V Electric	
202TS	*0.500" - 2.000" (*12.7 mm - 50.8 mm)	**0.187" (4.8 mm) max	Air	Faces, squares, ID chamfers end of heat exchanger tubing and tube sheets
204B	*0.610" - 4.500" (*15.5 mm - 114.3 mm)	**0.531" (13.5 mm) max	Air 110V Electric 220V Electric	Faces, counterbores, bevels pipe and tube
208B	*1.503" - 8.625" (*38.1 mm - 219.0 mm)	**0.875" (22.2 mm) max	Air 110V Electric 220V Electric Hydraulic	
214B	3.310" - 14.000" (84.0 mm - 355.6 mm)	**1.406" (35.7 mm) max	Air 110V Electric 220V Electric Hydraulic	
216B	*.610" - 4.500" (*15.5 mm - 114.3 mm)	**0.531" (13.5 mm) max	Air 110V Electric 220V Electric	
224B	6.813" - *42.000" (173.0 mm - *1066.8 mm)	**2.340" (59.4 mm) max	Air Hydraulic	
BoilerMaster	*0.610" - 4.330" (*15.5 mm - 110.0 mm)	**0.531" (13.5 mm) max	Air 110V Electric 220V Electric	
536 Fitting Machine	1.315" - 6.625" (33.4 mm - 168.3 mm)	0.562" (14.3 mm)	Air	Faces, counterbores, bevels fittings, elbows and tees
CouponMaster	*1.503" - 8.625" (*38.1 mm - 219.0 mm)	**0.875" (22.2 mm) max	Air 110V Electric 220V Electric Hydraulic	Faces, counterbores, bevels pipe and tube for weld coupons

\*With optional accessory included • \*\*For larger wall thickness, contact Tri Tool Inc. for heavier wall procedures • \*\*\*For tube sizes, contact Tri Tool Inc.

# TUBE FACING / SQUARING

Tri Tool 300 Series tube squaring machines that provide perfectly square ends on cut lengths of tube and fittings and deliver rapid and repeatable results.



## 300MF

### Features:

- 0.125" - 0.750" (3.2 mm - 19.1 mm) range
- OD Saddle Mount
- Auto-retract to prevent tube damage
- Cordless motor option



## 300STS-1

### Features:

- 0.125" - 1.125" (3.2 mm - 28.6 mm) range
- OD Saddle Mount
- In-line, Helical feed
- Cordless / Electric motor options



## 300STS-2

### Features:

- 0.188" - 2.500" (4.8 mm - 63.5 mm) range
- OD Saddle Mount
- Gear reduction for larger diameter
- Cordless / Electric motor options



## 301.5SP

### Features:

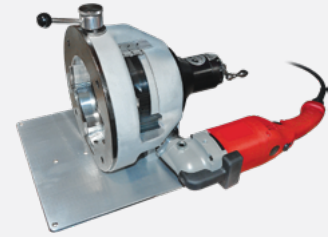
- 0.125" - 1.500" (3.2 mm - 38.1 mm) range
- OD Saddle Mount
- Short perch mounting for minimal length clamping
- Cordless / Electric motor options



## 304

### Features:

- 0.250" - 4.500" (6.35 mm - 114.3 mm) range
- OD Saddle Mount
- Toolless, quick change saddle system
- Air / Electric motor options



## 306

### Features:

- 1.000" - 6.630" (25.4 mm - 168.3 mm) range
- OD Saddle Mount
- Bench Mount plate and 3 tool bit slot
- Air / Electric motor options

## 300 SERIES TECH SPECS AT A GLANCE

Model	Pipe / Tube Size	Wall Thickness	Drive Options	Application / Usage
<b>300MF</b>	*0.125" - 0.750" (*3.2 mm - 19.1 mm)	0.125" (3.2 mm) max	12V Cordless	Faces & squares small tubes and fittings in confined spaces. Flex drive shaft option for tight installation.
<b>300STS-1</b>	0.125" - 1.125" (3.2 mm - 28.6 mm)	0.125" (3.2 mm)	18V Electric 110V Electric 220V Electric 100V Electric	<ul style="list-style-type: none"> <li>• Faces &amp; squares tubing, pipe &amp; fittings, both hand held and mounted on a workbench with optional stand.</li> <li>• Unique feed actuation tube design suited for repetitive use, reduced operator fatigue, and heavy wall machining.</li> <li>• Perfect for low clearance facing operations.</li> <li>• Tooling options available for simultaneous facing and beveling.</li> </ul>
<b>300STS-2</b>	0.188" - 2.500" (4.8mm - 63.5mm)	0.200" (5.1 mm)	18V Electric 110V Electric 220V Electric 100V Electric	
<b>301.5SP</b>	*0.125" - 1.500" (*3.2 mm - 38.1 mm)	0.125" (3.2 mm) max	18V Cordless 100V Electric 110V Electric 220V Electric	Faces & squares small tubing and pipe. Right angle feed handle design with spring-back return is ideal for workbench applications.
<b>304</b>	*0.250" - 4.500" (*6.35 mm - 114.3 mm)	0.250" (6.4 mm) max	Air 100V Electric 110V Electric 220V Electric	<ul style="list-style-type: none"> <li>• Faces, squares, &amp; bevels tube and pipe. Removable baseplate allows for in-situ operation.</li> <li>• Precision micro-feed provides zero-backlash machining ideal for high purity applications.</li> </ul>
<b>306</b>	1.000" - 6.630" (25.4 mm - 168.3 mm)	0.250" (6.4 mm) max	*Air 110V Electric 220V Electric	

\*With optional accessory included

# TUBE SEVERING

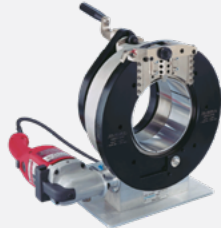
Rapid set-up Tri Tool 500 Series severing equipment for high-volume tube and pipe severing to boost productivity, produce weld-ready finishes, minimize risk of contamination.



## 572AC

### Features:

- 0.250" - 2.000" (6.4 mm - 50.8 mm) range
- OD Collet Mount machine
- Auto-cycle tool module and quick lock collet
- Air / Electric motor options



## 576AC

### Features:

- 2.000" - 6.625" (50.8 mm - 168.3 mm) range
- OD Collet Mount machine
- Auto-cycle tool module and quick lock collet
- Air / Electric motor options



## 5712

### Features:

- 8.000" - 12.000" (203.2 mm - 304.8 mm) range
- OD Collet Mount machine
- Auto-cycle tool module and quick lock collet
- Pneumatic / Electric motor options

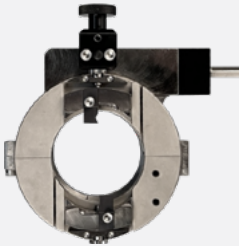
## 500 SERIES TECH SPECS AT A GLANCE

Model	Pipe / Tube Size	Wall Thickness	Drive Options	Application / Usage
572AC	0.250" - 2.000" (6.4 mm - 50.8 mm)	0.125" (3.2 mm)	*Air 110V Electric 220V Electric	Compact machine tool for severing tubes
576AC	2.000" - 6.625" (50.8 mm - 168.3 mm)	**0.156" (4.0 mm)	*Air 110V Electric 220V Electric	Severs, squares tube and thin wall pipe
5712	8.000" - 12.000" (203.2 mm - 304.8 mm)	0.250" (6.35 mm)	*Air 110V Electric 220V Electric	Large tube and thin wall pipe severing

\*With optional accessory included

# CUTTING & BEVELING

Tri Tool 600 Series Clamshells for an any application, pipe size or material offering best-in-class precision, maximum durability, and simple set-up and operation.



## 601SBCM - 603.5SBCM

### Features:

- 0.405" - 4.000" (10.3 mm - 101.6 mm)
- OD Collet Mount machine
- Flex Drive option and safety locking mechanism
- Air / Cordless Motor options



## 601SBM - 602.5SBM

### Features:

- 0.540" - 3.000" (13.7 mm - 76.2 mm)
- OD Mount machine
- Socket weld removal kit option
- Air / Electric motor options



## 602TSB

### Features:

- 1.500" - 2.000" (38.1 mm - 50.8 mm) range
- OD Mount machine
- Low-profile for boiler pipe / tube applications
- Air motor option



## 604SB - 612SB

### Features:

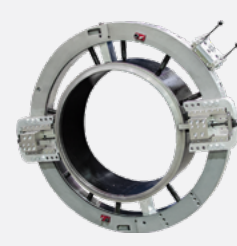
- 2.375" - 12.750" (60.3 mm - 323.9 mm)
- OD Mount machine
- Self-centering Pads for easy mounting or fully adjustable clamping pads for out-of round pipe conditions
- Air / Electric / Hydraulic / Servo motor option



## 612RBL-G2 - 642RBL-G2

### Features:

- 7.000" - 42.000" (177.8 mm - 1066.8 mm)
- OD Mount machine
- Adjustable mounting pads for out of round pipe conditions / \* Lighter weight than SB model
- Air / Electric / Hydraulic / Servo motor option



## 648RBL - 660RBL

### Features:

- 42.000" - 60.000" (1066.8 mm - 1524.0 mm)
- OD Mount machine
- RBL and SB tool module / tripper capable
- 2 piece or 4 piece housing model options
- Air / Hydraulic motor option

## 600 SERIES TECH SPECS AT A GLANCE

Model	Pipe / Tube Size	Wall Thickness	Drive Options	Application / Usage
601SBCM	***0.125" - 1.000" (3.2 mm - 25.4 mm)	**0.250" (6.4 mm)	Air 18V Cordless	<ul style="list-style-type: none"> <li>• Ultra-low profile, split-frame lathes for severing and beveling in-line tube and pipe in low-clearance applications</li> <li>• Self-centering collet mounting system is ideal for situations where fast machine setup is critical</li> <li>• Flexible drive shaft available for operation in small spaces where the motor cannot attach directly to the machine</li> <li>• Cordless battery motor operation available for unplugged use</li> <li>• Socket weld removal applications</li> <li>• Chipless roller cutter wheel sever applications</li> </ul>
602SBCM	***1.315" - 2.375" (33.4 mm - 60.3 mm)	**0.250" (6.4 mm)	Air 18V Cordless	
603SBCM	***1.500" - 3.000" (38.1 mm - 76.2 mm)	**0.358" (9.1 mm)	Air 18V Cordless	
603.5SBCM	***2.875" - 4.000" (73.0 mm - 101.6 mm)	**0.358" (9.1 mm)	Air 18V Cordless	
601SBM	***0.540" - 1.315" (13.7 mm - 33.4 mm)	**1.000" (25.4 mm)	Air	<ul style="list-style-type: none"> <li>• Low profile, split-frame lathes for sever, bevel, and counterbore of in-line tube and pipe.</li> <li>• Applications where off-axis adjustment of the machine position is required for deformed pipe or nonconcentric pipe ID.</li> <li>• Chipless roller cutter wheel sever applications.</li> <li>• Bench mount use with optional machine stand.</li> <li>• Socket weld removal applications.</li> </ul>
602TSB	***1.500" - 2.000" (38.1 mm - 50.8 mm)	**0.800" (20.3 mm)	Air	
602.5SBM	***1.315" - 3.000" (33.4 mm - 76.2 mm)	**1.250" (31.8 mm)	Air 110V Electric	
604SB	***2.375" - 4.500" (60.3 mm - 114.3 mm)	**0.800" (20.3 mm)	Air 110V Electric 115V HD Electric 220V Electric Hydraulic Servo	<ul style="list-style-type: none"> <li>• Low profile, split-frame lathes for sever, bevel, and counterbore of in-line tube and pipe</li> <li>• Ultra-fine tool feed rate options available (0.001 &amp; 0.002 in/rev)</li> <li>• Reverse motor mounting option available for machining flush to a wall or obstruction</li> <li>• Applications where off-axis adjustment of the machine position is required for deformed pipe or nonconcentric pipe ID</li> <li>• Self-centering fixed mounting pad sets available for fast machine setup and alignment</li> <li>• Full-support mounting pad sets available for mounting on thin-wall pipe and maintaining roundness.</li> <li>• Carbide tooling options available for Inconel and other exotic alloys</li> <li>• ID machining applications such as chamfering, K-bevel, and counterboring.</li> <li>• Chipless roller cutter wheel sever applications</li> <li>• Bench mount use with optional machine stand</li> <li>• Socket weld removal applications</li> </ul>
606SB	***2.375" - 6.625" (60.3 mm - 168.3 mm)	**1.500" (38.1 mm)	Air 110V Electric 115V HD Electric 220V Electric Hydraulic Servo	
608SB	***4.500" - 8.625" (114.3 mm - 219.1 mm)	**1.500" (38.1 mm)	Air 110V Electric 115V Electric 230V Electric Hydraulic Servo	
610SB	***6.625" - 10.750" (168.3 mm - 273.0 mm)	**1.50" (38.1 mm)	Air 110V Electric 115V HD Electric 220V Electric Hydraulic Servo	
612SB	***8.625" - 12.750" (219.1 mm - 323.9 mm)	**1.500" (38.1 mm)	Air 115V Electric 220V Electric Hydraulic Servo	

## 600 SERIES TECH SPECS AT A GLANCE

Model	Pipe / Tube Size	Wall Thickness	Drive Options	Application / Usage
614RBL-G2	***7.000" - 14.000" (177.8 mm - 355.6 mm)	**2.500" (63.5 mm)	Air 115V HD Electric 220V Electric Servo Hydraulic	<ul style="list-style-type: none"> <li>• Split-frame lathes for sever, bevel, and counterbore of in-line pipe</li> <li>• Reverse motor mounting options and right-angle motors available for mounting or machining near a wall or obstruction</li> <li>• Off-axis adjustments of the machine position for use on deformed pipe or nonconcentric pipe IDs</li> <li>• Full-support mounting pad sets available for mounting on thin-wall pipe and maintaining roundness</li> <li>• OD Tracking Tool Module options for maintaining bevel land thickness on out-of-round pipe</li> <li>• Template-based single point machining options for complex bevel geometry</li> <li>• Carbide tooling available for Inconel and other exotic alloys</li> <li>• Chipless roller cutter wheel sever applications</li> <li>• Casing cutting applications</li> <li>• Socket weld removal applications</li> <li>• OD grooving applications</li> <li>• ID machining applications such as chamfering, K-bevel, and counterboring.</li> </ul>
616RBL-G2	***10.750" - 16.000" (273.1 mm - 406.4 mm)	**2.500" (63.5 mm)	Air 115V HD Electric 220V Electric Servo Hydraulic	
620RBL-G2	***14.000" - 20.000" (355.6 mm - 508.0 mm)	**2.500" (63.5 mm)	Air, 115V HD Electric 220V Electric Servo Hydraulic	
624RBL-G2	***18.000" - 24.000" (457.2 mm - 609.6 mm)	**2.500" (63.5 mm)	Air 115V HD Electric 220V Electric Servo Hydraulic	
630RBL-G2	***24.000" - 30.000" (609.6 mm - 762.0 mm)	**2.500" (63.5 mm)	Air 115V HD Electric 220V Electric Servo Hydraulic	
636RBL-G2	***30.000" - 36.000" (762.0 mm - 914.4 mm)	**2.500" (63.5 mm)	Air 115V HD Electric 220V Electric Servo Hydraulic	
642RBL-G2	***36.000" - 42.000" (914.4 mm - 1066.8 mm)	**2.500" (63.5 mm)	Air 115V HD Electric 220V Electric Servo Hydraulic	
648RBL	42.000" - 48.000" (1066.8 mm - 1219.2 mm)	**2.500" (63.5 mm)	Air Hydraulic	
660RBL	***54.000" - 60.000" (1371.6 mm - 1524.0 mm)	**4.630" (117.8 mm)	Hydraulic	

\*With optional accessory included • \*\*For larger wall thickness, contact Tri Tool Inc. for heavier wall procedures • \*\*\*For tube sizes, contact Tri Tool Inc.

# BOILER & HEAT EXCHANGER

Specialized equipment for boiler machining operations and heat exchanger construction and repairs.



## 202TS

**Features:**

- 0.188" - 2.000" (4.8 mm - 50.8 mm) range
- OD Mount Machine
- Compact for limited clearance, auto-feed mechanism
- Air / Cordless / Manual motor options



## 602TSB

**Features:**

- 0.250" - 2.000" (6.4 mm - 50.8 mm) range
- OD Collet Mount machine
- Auto-cycle tool module and Quick lock collet
- Air / Electric motor options



## BOILERMASTER

**Features:**

- 0.610" - 4.500" (15.5 mm - 114.3 mm) range
- ID Mount machine
- Specialized for boiler applications
- Air / Electric motor options

## BOILER & HEAT EXCHANGER SERIES TECH SPECS AT A GLANCE

Model	Pipe / Tube Size	Wall Thickness	Drive Options	Application / Usage
202TS	*0.500" - 2.000" (*12.7 mm - 50.8 mm)	**0.187" (4.8 mm) max	Air	Faces, squares, ID chambers end of heat exchanger tubing and tube sheets
602TSB	***1.500" - 2.000" (38.1 mm - 50.8 mm)	**0.800 (20.3 mm)	Air	Low profile, split-frame lathes severing and beveling of in-line tube and pipe
BoilerMaster	0.610" - 4.500" (15.5 mm - 114.3 mm)	**0.531" (13.5 mm) max	Air 110V Electric 220V Electric	Faces, counterbores, bevels boiler pipe and tube

\*With optional accessory included • \*\*For larger wall thickness, contact Tri Tool Inc. for heavier wall procedures • \*\*\*For tube sizes, contact Tri Tool Inc.

# PIPE FACING - LANDLINE

High-mobility pipe facing machine delivering maximum versatility and user control.



## TERRAMAX

### Features:

- 20.809" - 48.000" (528.5 mm - 1219.2 mm) pipe range
- ID Mount machine
- 2 Hose design
- Heavy-Duty, self-centering / Self-squaring Mandrel with expanding clamping feet
- Four ID Tracking Tool Modules for even cut load and "K" bevel geometries in heavy wall
- Hydraulic Powered

## PIPE FACING MACHINE TECH SPECS AT A GLANCE

Model	Pipe / Tube Size	Wall Thickness	Drive Options	Application / Usage
TerraMax	***20.809" - 48.000" (528.5 mm - 1219.2 mm)	**1.250" (31.8 mm)	Diesel Hydraulic Unit Excavator / Track Layer	Portable facing and beveling machine for midstream pipeline operations

\*With optional accessory included • \*\*For larger wall thickness, contact Tri Tool Inc. for heavier wall procedures • \*\*\*For tube sizes, contact Tri Tool Inc.

# HYDRAULIC POWER UNITS

Variable volume, pressure responsive, reversible hydraulic power supply units.



## 75-60/5

**Features:**

- Hydraulic Power Unit
- 75 HP motor, 60 GPM and 5 GPM pump (227.1 LPM 18.9 LPM)
- Pendant / Hose extension for remote work
- Three Hose design
- Diesel and Electric 3 phase power



## 765RVC2

**Features:**

- Hydraulic Power Unit
- 15 HP motor, Variable 22 GPM (83.3 LPM), 1800 PSI (12410kPa)
- Two Hose design
- Electric 3 phase power



## TERRAMAX HPU

**Features:**

- Hydraulic Power Unit
- 74 HP motor, Variable 50 GPM pump (189.3 LPM)
- Two Hose design
- Diesel Power

## HYDRAULIC POWER UNIT SERIES TECH SPECS AT A GLANCE

Model	Drive Options	Application / Usage
75-60/5	Electric *Diesel (Special Order)	Hydraulic power unit for offshore pipe facing machines (PFM)
765RVC2	3 Phase, 208 / 240 VAC 50 / 60 Hz @ 40 Amps 3 Phase, 380 VAC 50 Hz @ 26 Amps 3 Phase, 480 VAC 50 / 60 Hz @ 20 Amps	Portable, hydraulic power unit for 200 / 600 series tools
TerraMax HPU	Diesel	Diesel, hydraulic power unit for midstream PFMs (TerraMax)

\*With optional accessory included

# WALHONDE PIPE CLAMPS

Precision, light-to-heavy duty pipe alignment clamps with OD mount PP or PE options.



## TOP DAWG ALIGNMENT TOOL

**Features:**

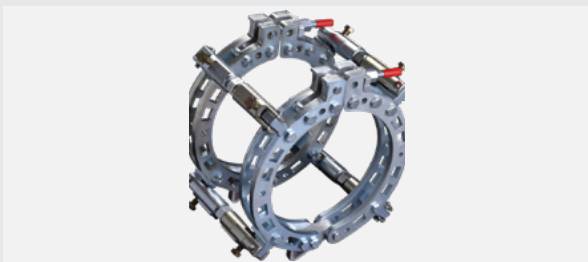
- 3/4" (19.0 mm) and 1" (25.4 mm)
- Precise high / low and gap spacing adjustments
- Compact for toolbox storage
- Carbon Steel, and Stainless options



## TOP LINER ELITE PIPE CLAMP

**Features:**

- 1.000" - 12.000" (33.4 mm - 323.9 mm)
- Precise high / low and gap spacing adjustments
- OD mount Pipe-to-Pipe or Pipe-to-Elbow
- + / - 10° degrees radial rotation



## TOP LINER PIPE CLAMP

**Features:**

- 2.000" - 72.000" (60.3 mm - 1828.8 mm)
- Precise high / low and gap spacing adjustments
- Rounds schedule 40 pipe and below
- OD mount Pipe-to-Pipe or Pipe-to-Elbow options
- Aluminum, Carbon Steel, and Stainless Steel options



## TOP LINER GEN III PIPE

**Features:**

- 1.000" - 12.000" (33.4 mm - 323.9 mm)
- Precise high / low and gap spacing adjustments
- OD mount Pipe-to-Pipe or Pipe-to-Elbow options
- Stainless Steel options

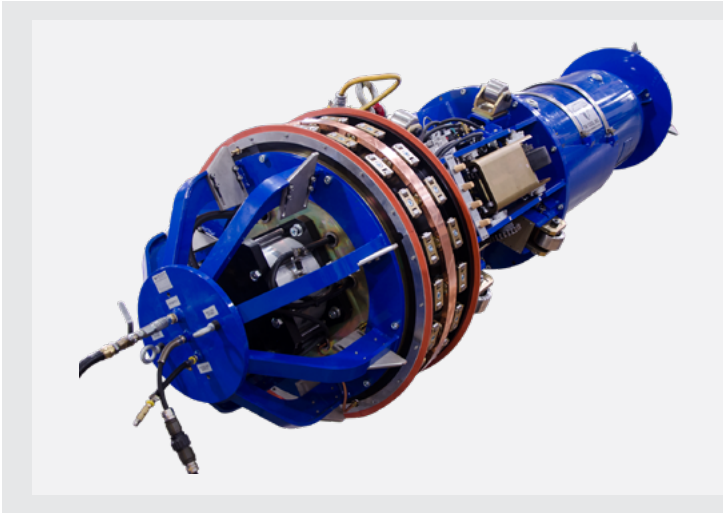
## WALHONDE PIPE CLAMPS SERIES TECH SPECS AT A GLANCE

<b>Model</b>	<b>Pipe / Tube Size</b>	<b>Wall Thickness</b>	<b>Application / Usage</b>
<b>Walhonde - Top Dog Alignment Tool</b>	Universal Pipe/Tube sizes	Universal Wall thickness	Weldable lugs for precise alignment for pipe, plate, tank vessel and steel structures
<b>Walhonde - Top Liner Elite Pipe Clamp</b>	1.000" - 12.000" (33.4 mm - 323.9 mm) pipe	-	Precision, light-to-medium duty pipe alignment with additional rotational control for "clocking" pipe, elbows, T's and fittings
<b>Walhonde - Top Liner Gen III Pipe Clamp</b>	1.000" - 12.000" (33.4 mm - 323.9 mm) pipe	-	Precision, light-to-medium duty pipe alignment made for pipe-to-pipe, pipe-to-long and short radius elbows, and pipe-to-tees
<b>Walhonde - Top Liner Pipe Clamp</b>	***20.809" - 48.000" (528.5 mm - 1219.2 mm) pipe	2.000" - 72.000" (60.3 mm - 1828.8 mm) pipe	Precision, heavy-duty pipe alignment made for heavy-wall and thin-wall rounding pipe applications

\*With optional accessory included • \*\*For larger wall thickness, contact Tri Tool Inc. for heavier wall procedures • \*\*\*For tube sizes, contact Tri Tool Inc.

# ILUC & LASER DIMENSIONING SYSTEM

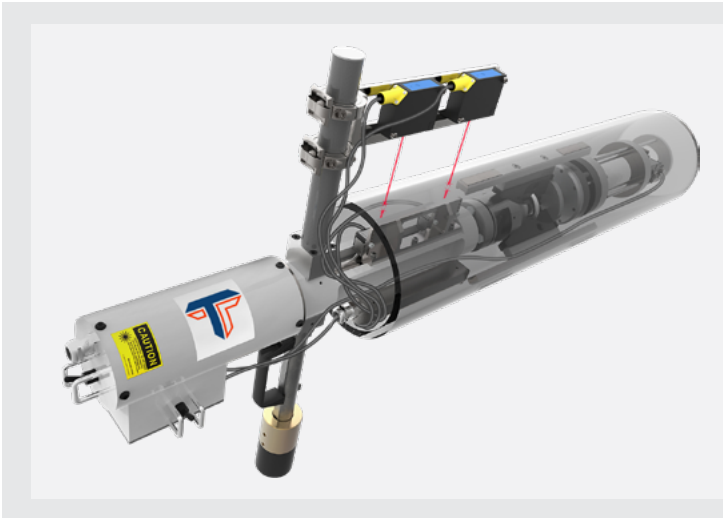
System to measure open-ended pipes using laser sensors, OD, ID and wall thickness.



## ILUC

### Features:

- 4.380" - 55.000" (111.3 mm - 1397.0 mm) ID range
- Used in double jointing, S-lay or J-lay applications
- Rounds schedule 40 pipe and below
- OD mount Pipe-to-Pipe or Pipe-to-Elbow options
- Aluminum, Carbon Steel, and Stainless Steel options



## LDS

### Features:

- Measures in ID, OD, and wall thickness in 30 seconds
- Pneumatic self-centering / squaring mandrel
- 720 point measurement provides 0.5 degree accuracy
- Electric 110V - 240V Power

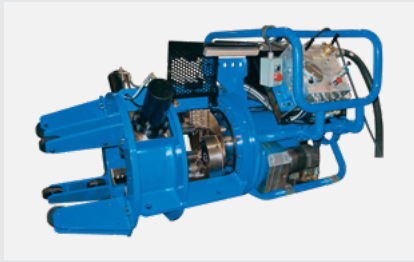
## ILUC & LASER DIMENSIONING SERIES TECH SPECS AT A GLANCE

Model	Pipe / Tube Size	Drive Options:	Application / Usage
ILUC	ID: 4.380" - 55.000" (111.3 mm - 1397.0 mm)	-	Provides internal line up for various pipeline welding applications.
Laser Dimensioning System	-	110V Electric 220V Electric	Measures open-ended pipes using laser sensors for high level of accuracy

\*With optional accessory included

# PIPE FACING - OFFSHORE

High-mobility pipe facing machines for offshore applications that increases cut speed by 10X.



## PFM614

### Features:

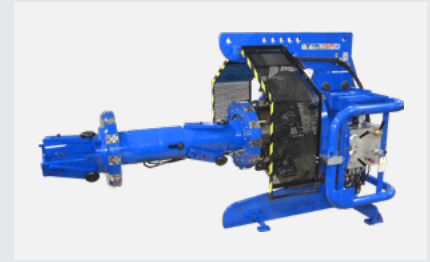
- 3.500" - 14.000"  
(88.9 mm - 355.6 mm)  
pipe range
- OD Mount machine
- Three Hose design
- Three ID Tracking tool modules allows for even cut loads for heavier wall thickness
- Hydraulic powered



## PFM816

### Features:

- 8.239" - 16.000"  
(209.3 mm - 406.4 mm)  
pipe range
- ID Mount machine
- Three Hose design
- Four ID Tracking tool modules allows for even cut loads for heavier wall thickness
- Hydraulic powered



## PFM1632

### Features:

- 13.900" - 36.000"  
(353.1 mm - 914.4 mm)  
pipe range
- ID Mount machine
- Three Hose design
- Five ID Tracking tool modules allows for even cut loads for heavier wall thickness
- Hydraulic powered



## PFM3248

### Features:

- 29.500" - 48.000"  
(749.3 mm - 1219.2 mm)  
pipe range
- ID Mount machine
- Three Hose design
- Five ID Tracking tool modules allows for even cut loads for heavier wall thickness
- Hydraulic powered



## LARGER PFM MACHINES

### Features:

- Custom Range
- ID Mount machine
- Three Hose design
- Custom ID Tracking tool modules
- Hydraulic powered

## PIPE FACING - OFFSHORE SERIES TECH SPECS AT A GLANCE

Model	Pipe / Tube Size	Wall Thickness	Drive Options	Application / Usage
<b>PFM614</b>	*3.500" - 14.000" (88.9 mm - 355.6 mm)	2.480" (63.0 mm)	Hydraulic	PFM for offshore applications
<b>PFM816</b>	8.239" - 16.000" (209.3 mm - 406.4 mm)	**1.600" (40.6 mm)	Hydraulic	
<b>PFM1632</b>	*13.900" - 36.000" (353.1 mm - 914.4 mm)	**1.880" (47.8 mm)	Hydraulic	
<b>PFM3248</b>	29.500" - 48.000" (749.3 mm - 1219.2 mm)	2.000" (50.8 mm)	Hydraulic	
<b>Larger PFM Machines</b>	-	-	Hydraulic	

*\*With optional accessory included • \*\*For larger wall thickness, contact Tri Tool Inc. for heavier wall procedures*

# CONSUMABLES / BITS

DURABIT tool bits for high RPMs to run all facing / squaring machines at full speed.



## DURABIT 1

### Features:

- Precisely faces and squares high purity tube ends
- Coating provides durability and longer cutting edge life over non-coated tool bits
- Use with 300 Series machines & 500 Series SQM Modules
- Designed to direct chips away from the ID of the tube



## DURABIT 2

### Features:

- Designed for short perch applications
- Precisely faces and squares high purity tube ends
- Coating provides durability and longer cutting edge life over non-coated tool bits
- Designed to direct chips away from the ID of the tube



## DURABIT 3

### Features:

- Designed for extreme short perch applications
- Precisely faces and squares high purity tube ends
- Coating provides durability and longer cutting edge life over non-coated tool bits
- Designed to direct chips away from the ID of the tube



## DURABIT 4

### Features:

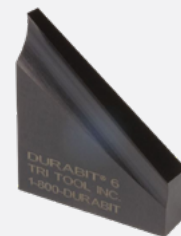
- Facing tool bit, used for squaring a pipe end and creating a land thickness on the beveled pipe end
- Coating provides durability and longer cutting edge life over non-coated tool bits
- Use with 208B and 214B machines



## DURABIT 5

### Features:

- 37.5 deg bevel tool bit, used in combination with the Durabit 4
- Coating provides durability and longer cutting edge life over non-coated tool bits
- Use with 208B and 214B machines



## DURABIT 6

### Features:

- 37.5 deg bevel tool bit, used to bevel the pipe to a feather edge
- Coating provides durability and longer cutting edge life over non-coated tool bits
- Use with 208B and 214B machines

FROM CUSTOM SOLUTIONS TO EXPERT FIELD SERVICES, TRI TOOL DELIVERS  
**CUTTING EDGE INNOVATION**

Combining relentless partnership with unrivaled experience and agility, we go above and beyond expectations to deliver solutions that accelerate your success.



**CUSTOM SOLUTIONS**



**FIELD SERVICES**

**UNIQUE CHALLENGES CALL FOR UNIQUE SOLUTIONS**

- Bespoke, MissionBuilt™ solutions custom-engineered to solve your unique challenges
- Provide risk-averse Cradle-to-Machining-Grave project management and customer support
- Have designed and delivered +5,800 MissionBuilt solutions

**ON-SITE FIELD MACHINING EXPERTISE**

- Reduce downtime, lower costs, and keep critical equipment in top condition
- Capable of mobilizing within 24 - 48 hours domestically
- Have completed +2,000 projects in 34 states and 16 countries
- Equipment deployed with trained machinist



**FIELD REPAIRS**



**RENTALS**

**ON-SITE EQUIPMENT REPAIRS**

- Mobile equipment repair, maintenance, and inspection at your project site
- Drives cost savings and increased availability and productivity
- Capable of mobilizing within 24 - 48 hours domestically

**OEM EQUIPMENT WITHOUT THE COMMITMENT**

- Offer as-needed and subscription equipment rental programs
- Significantly reduces capital expense for ownership, storage and maintenance
- Provide on-site personnel training on all product lines
- Tri Tool & Non - OEM Equipment



**Whatever your challenge, Tri Tool gives you the edge.**

To learn more about Tri Tool's standard and custom precision machine tools, contact our specialists at +1-916-288-6100 or [Info@tritool.com](mailto:Info@tritool.com) and visit [tritool.com](http://tritool.com)

