

The logo features the word "ULMATEC" in a bold, white, sans-serif font, enclosed within a white rounded rectangular border. To the right of this border is a solid dark blue square.

ULMATEC

· extraction systems ·

Product catalogue

A photograph showing the bottom edge of four stainless steel exhaust hoods. Each hood has a series of horizontal slats. The background is a light, neutral color.

www.ULMATEC.com

extraction systems

About ULMATEC

ULMATEC plans, produces and sells products for industrial extraction technology. Our long-term experience on the market guarantees high-quality and technically mature products. Customised solutions from a single source make us your competent ISO-certified partner for clean air at the workplace.

Our customers are our potential. Your long-term satisfaction is our target and serves as a specification for daily work. We provide effectiveness and efficiency. Considering ourselves partners of our employees, customers and suppliers ensures permanent success. Win-win-situations are the shared future.

We put great value on a personal contact with our national and international customers. In close cooperation, we support you from the first interview to the after-sales service. Dealer, engineer, planner or end customer - we ensure customer-oriented and individual support.



To our
image video!



Certified according to
DIN EN ISO 9001



CONTENTS _____ PAGE


CONTENTS _____ PAGE

Knowledge Basis..... 4-5
 Function Description..... 46
 Cleaning Types..... 47
 Modular Build 8-9


1 | Industrial Deduster 10-11
 Type IEP Middle Pressure/High Pressure 12-15
 Equipment and Options 16-17
 Type IES Middle Pressure/High Pressure 18-21
 Equipment and Options 22-23
 Collection Elements and Accessories 24-25

2 | Industrial Smoke Filter 26-27
 Type IRE Middle Pressure/High Pressure 28-31
 Equipment and Options 32-33
 Collection Elements and Accessories 34-35

3 | Industrial Extractor 36
 Type ISP/ISS 37-38
 Equipment and Options 39-40
 Accessories 41


 **4 | Oil Mist Separator 42-44**
 Type OES 42-44


 **5 | Wet Separator 46-47**
 Type NAS Middle Pressure 46-47

 **6 | Industrial Air Extraction 48-49**
 Type ILA..... 48-49

7 | Collection Elements 50-57
 Extraction Arms Type APU..... 50-52
 Extraction Tables Type ATU and ATR 53-55
 Extraction Hoods AH..... 56
 Extraction Accessories 57

**8 | Pipe, Channel, Hose
 and Attachment Systems 58-59**

9 | Pre-Separator 60-65 
 Type ZVA / ZVM / MVA / PVA / WVA..... 60-65

10 | Filter Units 66-72
 Type FEP/FES and FEZ/FEN 66-71
 Type FOS 72 

11 | Removal and Conveyor Elements 74-75

12 | Condenser 76-81
 Type MRG/MAG and STB/SKV/DKV 76-81

13 | Control 82-83

14 | Noise Protection 84-85

15 | Fire and Explosion Protection..... 86-87

16 | Hall Extractions 88-92

17 | Services 94-95

References 96-130



General

In industry, materials of which even the smallest particles may cause health damage, such as respiratory disease, cardiovascular problems or an increased risk of cancer, are often processed.

Therefore, ULMATEC, as supplier for extraction technology, has made it its task to protect people in their working environment and the environment as such from too-high contamination with very fine dust.

Workplace limits and particle fractions

Workplace limits are shift averages at usually eight hours' exposure per day and at compliance with an average weekly working time of 40 hours.

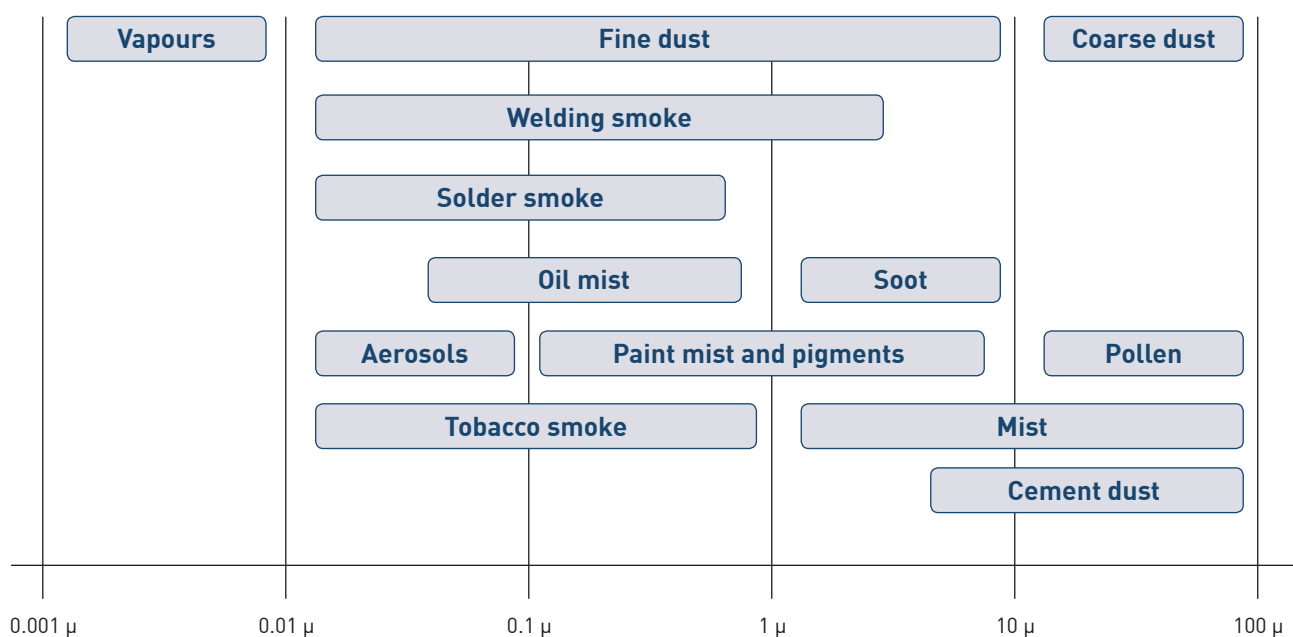
Dust with a particle size of less than approx. 100 µm is called E-dust (former: coarse dust) and can be inhaled through mouth and nose.

Dust with a particle size of less than 5 µm is lung-passing and can enter the alveoli. This dust is called A-dust (former: fine dust).

Workplace limits and particle fractions

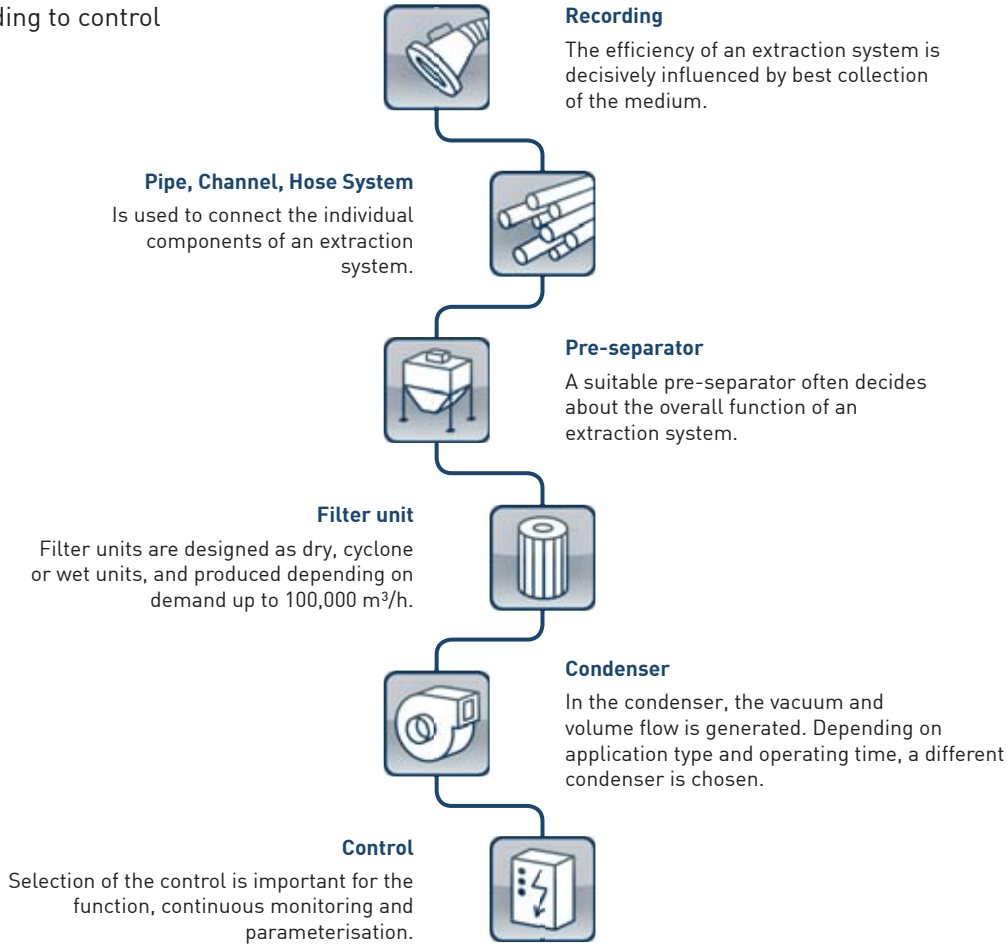
Designation	Limit (air)	Particle fraction
	in mg/m ³	
Aluminium oxide	3	E
Lead compounds	0.15	E
Chrome-III-compounds	2	E
Chrome-VI-compounds	0.05	E
Cobalt a. compounds	0.1	E
Carbon dioxide	9,100	E
Copper	0.1	E
Nickel	0.5	E
Quartz dust	0.15	A
Tin compounds	2	E

Particle size dust/smoke types



How extraction technology works

From recording to control



Icons

based on these icons, you will find the right product for your dust type on the following pages.

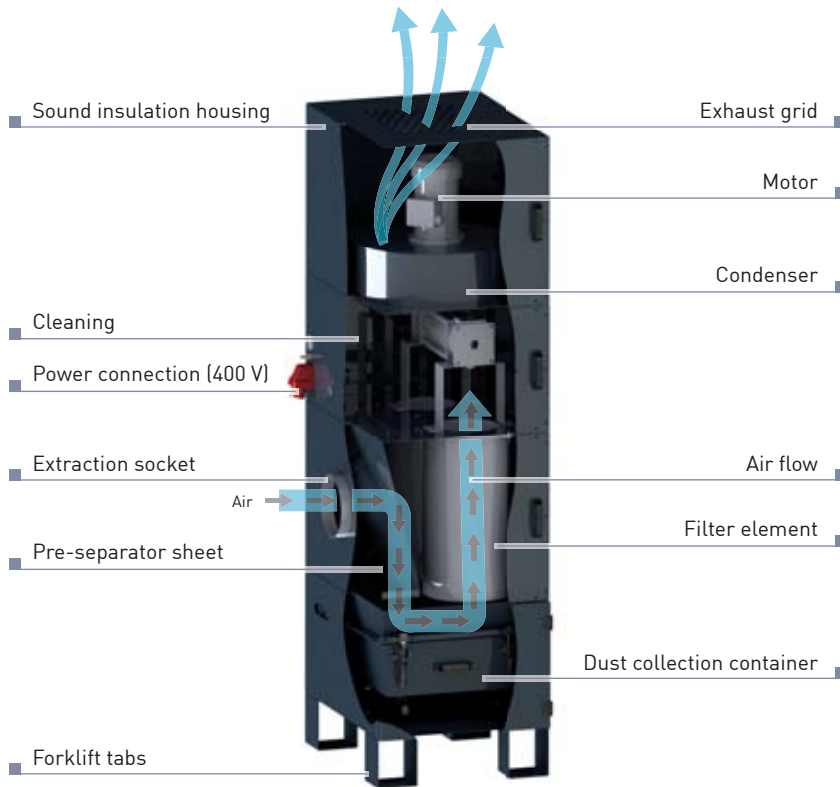


Processes with frequent extraction

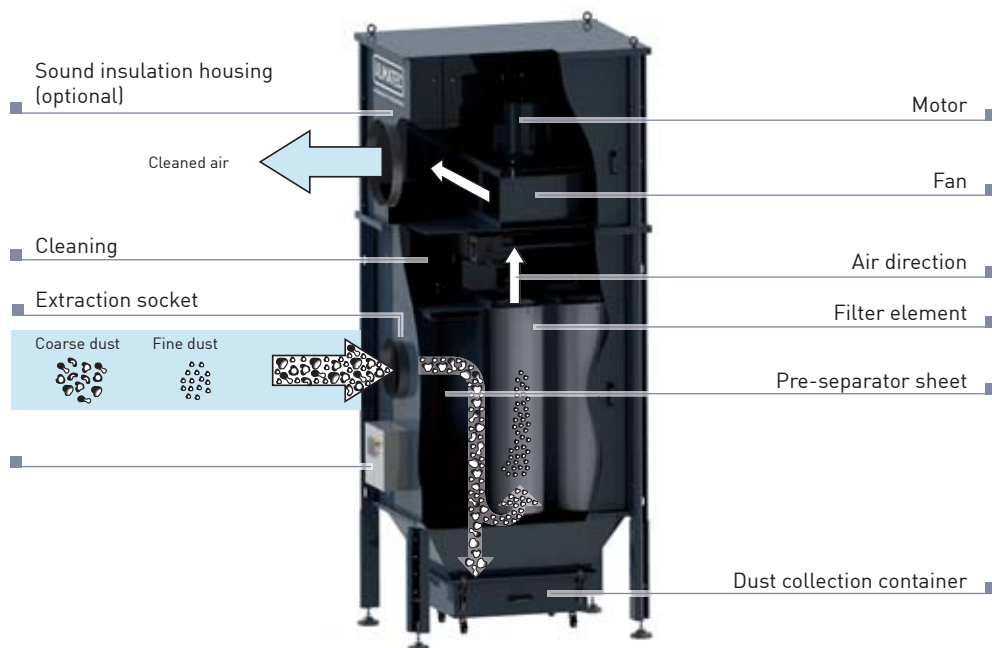


Function Description

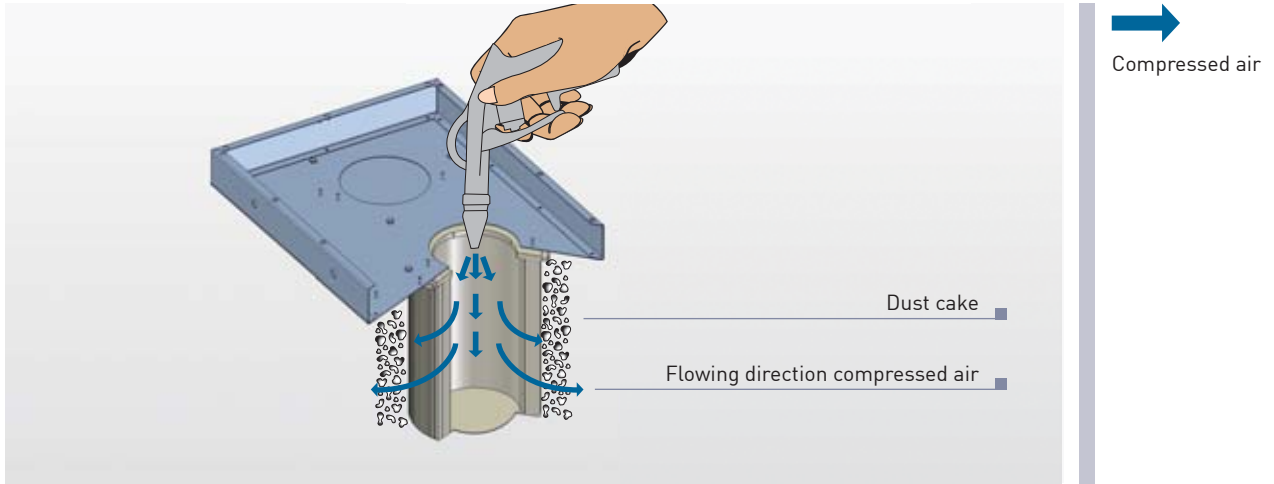
Size 1 - 3



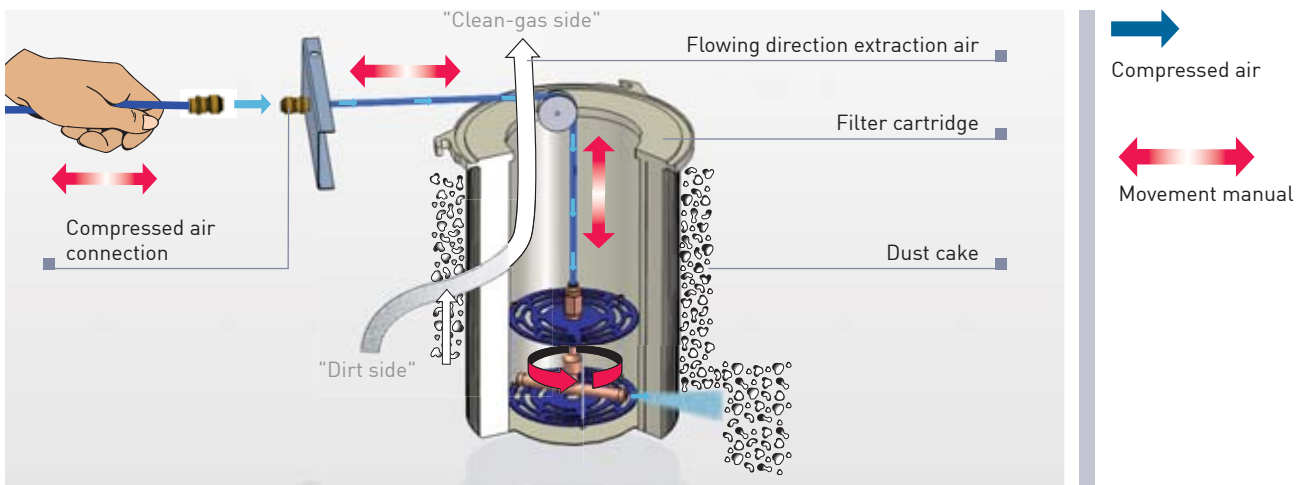
Size 4 - 8



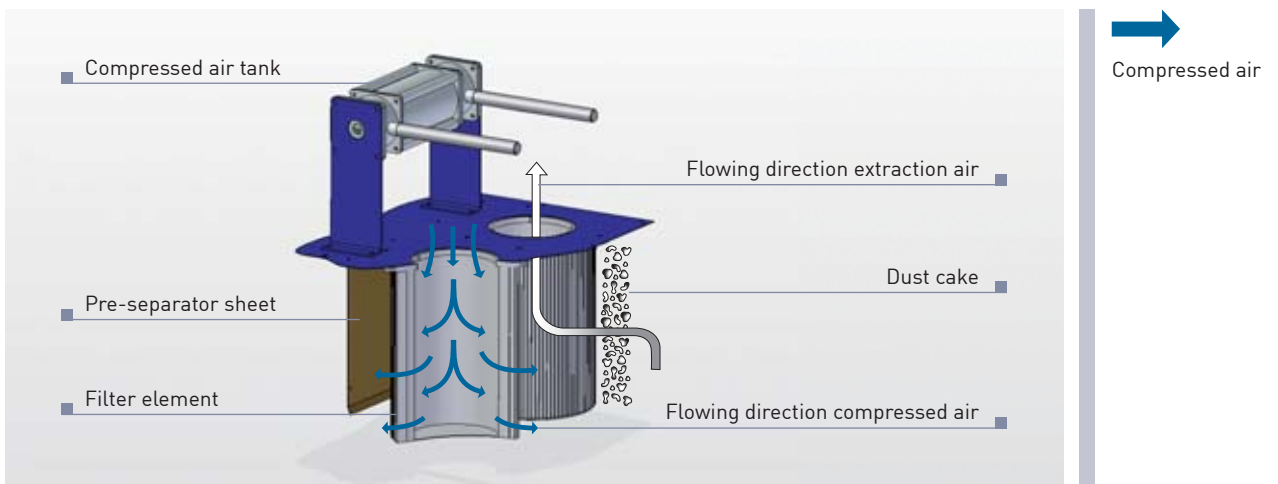
Manual cleaning



Manual rotation cleaning



Automatic compressed air filter cleaning (Jet-Pulse)



Modular Build

ULMATEC produces modular extraction systems.

This build, which is unique on the market, permits combining more than 100,000 different versions.

This way, the extraction system is put together specifically according to your needs.

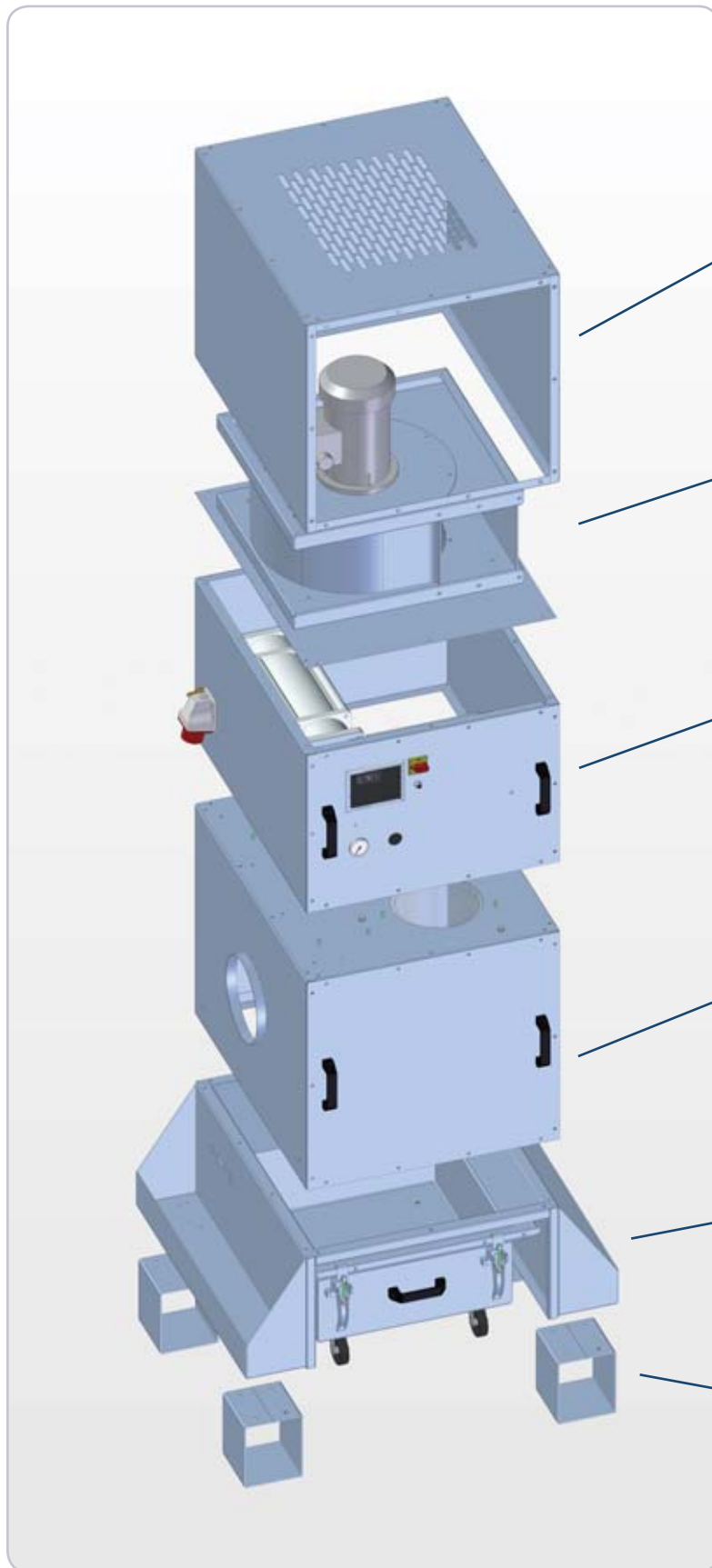
exhaust-module

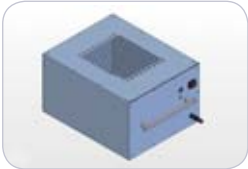
compressor-module

cleaning-module

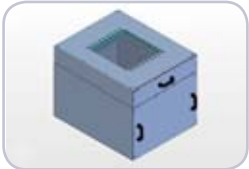
filter-module

discharge-module





Exhaust module
Blow-out top
M-line control



Exhaust module
Blow-out top
Active coal module
H-line control



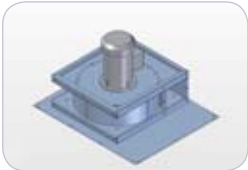
Exhaust module
Blow-out top
Policing filter
H-line control



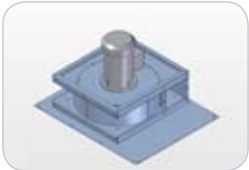
Exhaust module
Blow-out top
Policing filter
M-line control



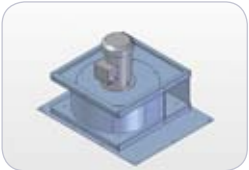
Exhaust module
Blow-out sideways
M-line control



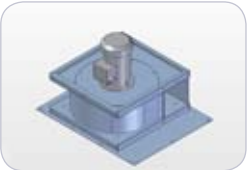
Condenser module
MRG 0.55/1.1 kW



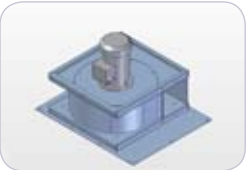
Condenser module
MRG 2.2/3.0 kW



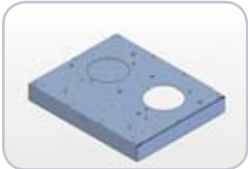
Condenser module
MRG 4.0 kW



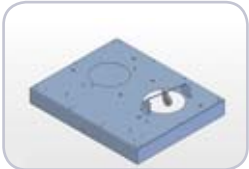
Condenser module
MRG 5.5/7.5 kW



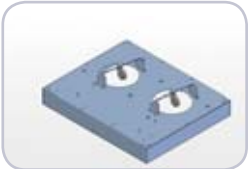
Condenser module
MRG 11.0 kW



Cleaning module
Manual cleaning
for 1 filter cartridge



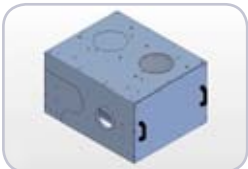
Cleaning module
Manual
rotation cleaning
for 1 filter cartridge



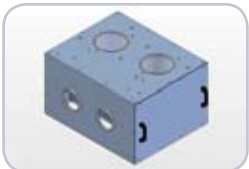
Cleaning module
Manual
rotation cleaning
for 2 filter cartridges



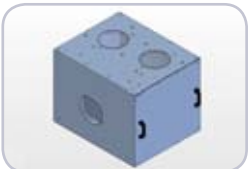
Cleaning module
Automatic compressed
air filter cleaning (Jet-
Pulse)



Filter module
Filter unit with 8/15 m²
filter area and
1 x extraction socket



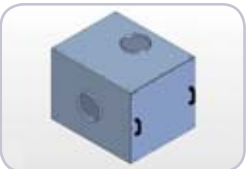
Filter module
Filter unit with 8/15 m²
filter area and
2 x extraction socket



Filter module
Filter unit with 20/25 m²
filter area and
1 x extraction socket



Filter module
Filter unit
Cyclone pre-separator
with Extraction socket



Filter module
Filter unit pre-separator
with 1 x extraction socket



Removal and
mobility module
Drawer
with forklift tabs



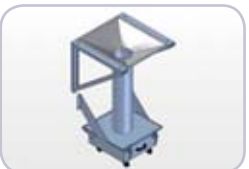
Removal and
mobility module
Container 50/80 l
with forklift tabs



Removal and
mobility module
Container 130 l
with wheels ø 160 mm



Removal and
mobility module
Container 50 l



Removal and
mobility module
Container
Removal level 0
with wall holder



Standing base



Forklift tabs



Wheel
Height 100 mm



Wheel
Height 160 mm



Wall attachment

Industrial deduster type IE

Product overview



Dust



Granulate



Chips

Industrial dedusters by ULMATEC are used in finishing processes where dust, chips or granulate arises.

The modular build permits many options (see pages 16-17) and the devices can be individually adjusted to any purpose based on different filter types (**cartridge filter** = IEP, **hose filter** = IES).

ULMATEC industrial dedusters can be produced mobile or stationarily, or for wall attachment.

Large filter areas in connection with a low filter area load guarantee maximum service lives and thus a long lifetime.

A large number of different collection elements (see pages 24-25) makes industrial dedusters the complete central dedusting unit in your company.



IEP 20-2-2 / 3.0 MD with options



Industries

- Waste and recycling management, environmental technology
- Automotive
- Chemistry, pharmaceuticals, minerals, cosmetics
- Print shop and book binding
- Wood processing and finishing industry
- Plastic, rubber processing and finishing industry
- Engineering
- Metal and iron
- Food and luxury goods
- Optics, medicine, dental
- Paper, tissue, cardboard
- Stones & earths, construction materials, glass, ceramics
- Textile, leather, clothing
- Other

processes

- | | |
|--------------------------------|-------------|
| - Bottling, filling, refilling | - Mixing |
| - Transport | - Polishing |
| - Coating | - Sawing |
| - Drilling | - Grinding |
| - Turning | - Blasting |
| - Angle grinding | - Chopping |
| - Milling | - Other |
| - Casting | |

Industrial deduster type IEP, MD

Series IEP, MD



Dust



Granulate



Chips

Industrial dedusters IEP MD are produced modularly in eight sizes.

An integrated pre-separator protects the filters.

Permanent filters of dust class "M" ensure long service lives and low operating costs. Different filter properties make it possible to extract nearly any medium.

Cleaning takes place manually, with rotation cleaning or according to the jet pulse procedure, depending on design.

Collected dusts are removed into a mobile dust collection container.

The static and dynamic propeller makes the fan run really smoothly. It is powered directly and suitable for 3-shift operation.

Various controls can be chosen depending on size.

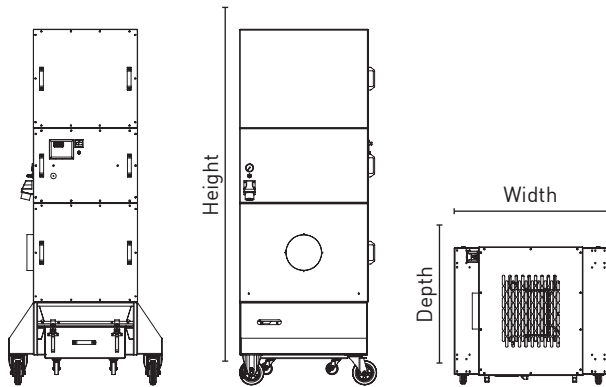


Figure shows options

Type	Condenser	Volume flow	Vacuum	Socket ø	Filter area	Sizes (WxDxH)	Con-struction size	Weight	Order no.
	in kW/V/Hz	in m³/h (max.)	in Pa (max.)	in mm	in m²	in mm (approx.)	(BG)	in kg (approx.)	
IEP 3-2-1 / 0.37 MD	0.37/400/50	750	1,450	80	3	450 x 550 x 1,130	1	45	IEP0030037
IEP 3-2-1 / 0.55 MD	0.55/400/50	1,500	1,610	100	3	450 x 550 x 1,130	1	52	IEP0030055
IEP 8-1-2 / 1.1 MD	1.1/400/50	2,400	2,200	150	8	970 x 800 x 1,480	2	95	IEP0080110
IEP 15-2-2 / 1.1 MD	1.1/400/50	2,400	2,200	150	15	970 x 800 x 1,480	2	105	IEP0150110
IEP 15-2-2 / 2.2 MD	2.2/400/50	4,600	2,800	160	15	970 x 800 x 1,630	2	140	IEP0150220
IEP 20-2-2 / 3.0 MD	3.0/400/50	5,200	3,100	200	20	970 x 800 x 1,630	2	182	IEP0200300
IEP 20-2-3 / 4.0 MD	4.0/400/50	6,100	3,150	224	20	1,470 x 800 x 2,080	3	510	IEP0200400
IEP 40-2-3 / 4.0 MD	4.0/400/50	6,100	3,150	224	40	1,470 x 800 x 2,080	3	565	IEP0400040
IEP 40-4-3 / 5.5 MD	5.5/400/50	8,100	3,400	315	40	1,470 x 800 x 2,080	3	630	IEP0400550
IEP 60-6-5 / 7.5 MD	7.5/400/50	10,500	3,800	355	60	1,455 x 1,040 x 3,630	5	815	IEP0600750
IEP 80-4-3 / 5.5 MD	5.5/400/50	8,100	3,400	315	80	1,470 x 800 x 2,080	3	655	IEP0800550
IEP 80-4-3 / 7.5 MD	7.5/400/50	10,500	3,800	355	80	1,470 x 800 x 2,080	3	685	IEP0800750
IEP 90-9-6 / 11 MD	11/400/50	13,800	3,700	450	90	1,870 x 1,455 x 3,630	6	930	IEP0901100
IEP 120-6-5 / 11 MD	11/400/50	13,800	3,700	450	120	1,455 x 1,455 x 3,630	5	910	IEP1201100
IEP 120-12-7 / 15 MD	15/400/50	19,200	3,750	500	120	1,870 x 1,870 x 3,990	7	1,210	IEP1201500
IEP 148-4-3 / 11 MD	11/400/50	13,800	3,700	450	148	1,470 x 800 x 2,280	3	780	IEP1481100
IEP 160-16-8 / 18, 5 MD	18.5/400/50	24,700	3,500	560	160	2,285 x 1,870 x 3,990	8	1,470	IEP1601850
IEP 160-16-8 / 22 MD	22/400/50	28,100	3,600	600	160	2,285 x 1,870 x 3,990	8	1,510	IEP1602200
IEP 180-9-6 / 15 MD	15/400/50	19,200	3,750	500	180	1,870 x 1,455 x 3,630	6	1,015	IEP1801500
IEP 240-12-7 / 18.5 MD	18.5/400/50	24,700	3,500	560	240	1,870 x 1,870 x 3,990	7	1,330	IEP2401850
IEP 240-12-7 / 22 MD	22/400/50	28,100	3,600	600	240	1,870 x 1,870 x 3,990	7	1,365	IEP2402200
IEP 320-16-8 / 30 MD	30/400/50	35,200	9,800	630	320	2,285 x 1,870 x 3,990	8	1,630	IEP3203000
IEP 320-16-8 / 37 MD	37/400/50	39,400	3,600	710	320	2,285 x 1,870 x 3,990	8	1,710	IEP3203700

For options, see pages 16-17



IEP 40-4-3 / 7.5 MD



IEP 20-2-2 / 3.0 MD
with integrated
cyclone pre-separator
module

Your advantages at a glance

- ▶ High suction output by low resistances
- ▶ Low operating costs by cleanable permanent filters of the dust class "M" (99.98%)
- ▶ Minimum filter application by integrated pre-separator
- ▶ Many optional and expansion options by modular build
- ▶ Coated pre-separation sheet for use with abrasive media
- ▶ Simple emptying by movable dust collection container
- ▶ Indoor and outdoor setup possible by high-quality powder coating (from BG 3 onwards)
- ▶ All components suitable for 3-shift operation
- ▶ Stable steel sheet construction



Ceramically
coated
pre-separator sheet for
abrasive materials

Industrial deduster type IEP, HD

Series IEP, HD



Dust



Granulate



Chips

Industrial dedusters IEP HD are produced modularly in eleven performance sizes.

An integrated pre-separator protects the filters.

Permanent filters of dust class "M" ensure long service lives and low operating costs. Different filter properties make it possible to extract nearly any medium.

Cleaning takes place manually, with rotation cleaning or according to the jet pulse procedure, depending on size and design.

Collected dusts are removed into a mobile dust collection container.

Using different compaction techniques makes the device suitable for anything from sporadic use to permanent use.

Various controls can be chosen depending on size.

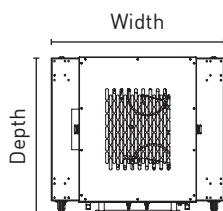
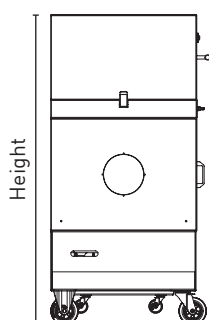
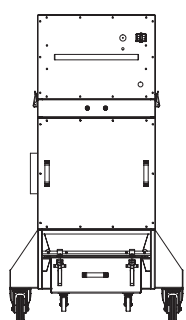


Figure shows options

Type	Condenser	Volume flow	Vacuum	Socket \varnothing	Filter area	Sizes (WxDxH)	Construction size	Weight	Order no.
	in kW/V/Hz	in m ³ /h (max.)	in Pa (max.)	in mm	in m ²	in mm (approx.)	(BG)	in kg (approx.)	
IEP 2-1-1 / 0.7 HD	0.7/400/50	140	12,000	50	1.6	450 x 550 x 1,130	1	50	IEP0020070
IEP 3-2-1 / 1 T	1.0/230/50	190	22,000	40	1.6	450 x 550 x 880	1	68	IEP003010T
IEP 3-2-1 / 1.3 HD	1.3/400/50	210	17,000	63	3.2	450 x 550 x 1,130	1	78	IEP0030130
IEP 3-2-1 / 2 T	2.0/230/50	380	22,000	50	3	450 x 550 x 880	1	72	IEP003020T
IEP 3-2-1 / 2.2 HD	2.2/400/50	315	19,000	70	3.2	450 x 550 x 1,130	1	86	IEP0030220
IEP 3-2-1 / 3 T	3.0/230/50	570	22,000	80	3.2	450 x 550 x 880	1	76	IEP003030T
IEP 3-2-1 / 3.0 HD	3.0/400/50	315	26,000	70	3.2	450 x 550 x 1,130	1	98	IEP0030300
IEP 8-1-2 / 4.0 HD	4.0/400/50	530	20,000	100	8	650 x 800 x 1,630	2	142	IEP0080400
IEP 15-2-2 / 5.5 HD	5.5/400/50	530	30,000	100	15	650 x 800 x 1,630	2	163	IEP0150550
IEP 15-2-2 / 8.5 HD	8.5/400/50	1,050	19,000	125	15	650 x 800 x 1,630	2	176	IEP0150850
IEP 15-2-2 / 12.5 HD	12.5/400/50	1,050	29,000	125	15	650 x 800 x 1,630	2	192	IEP0151250

For options, see pages 16-17



IEP 15-2-2 / 8.5 HD
with baffle plate
pre-separator (PVA)

Your advantages at a glance

- ▶ Even vacuum from high-quality condensers
- ▶ Low operating costs by cleanable permanent filters of the dust class "M" (99.98%)
- ▶ Minimum filter application by integrated pre-separator
- ▶ Many optional and expansion options by modular build
- ▶ Simple emptying by movable dust collection container
- ▶ Suitable as type HD for 3-shift operation
- ▶ Stable steel sheet construction

Equipment and Options

Series IEP, MD

Description		IEP 3-2-1 / 0.37 MD	IEP 3-2-1 / 0.55 MD	IEP 8-1-2 / 1.1 MD	IEP 15-2-2 / 1.1 MD	IEP 15-2-2 / 2.2 MD	IEP 20-2-2 / 3.0 MD	IEP 20-2-3 / 4.0 MD	IEP 40-2-3 / 4.0 MD	IEP 40-4-3 / 5.5 MD	IEP 60-6-5 / 7.5 MD	IEP 80-4-3 / 5.5 MD	IEP 80-4-3 / 7.5 MD	IEP 90-9-6 / 11 MD	IEP 120-6-5 / 11 MD	IEP 120-12-7 / 15 MD	IEP 148-4-3 / 11 MD	IEP 160-16-8 / 18.5 MD	IEP 160-16-8 / 22 MD	IEP 180-9-6 / 15 MD	IEP 240-12-7 / 18.5 MD	IEP 240-12-7 / 22 MD	IEP 320-16-8 / 30 MD	IEP 320-16-8 / 37 MD
Exhaust	Active coal	○	○	○	○	○	○	○	○	○	○	○	○	○	○	○	○	○	○	○	○	○	○	○
	H-13 filter	○	○	○	○	○	○	○	○	○	○	○	○	○	○	○	○	○	○	○	○	○	○	○
	Sound insulation housing	●	●	●	●	●	●	●	●	○	○	○	○	○	○	○	○	○	○	○	○	○	○	○
	Exhaust sideways	○	○	○	○	○	○	○	○	○	●	○	○	●	●	●	○	●	●	●	●	●	●	●
	Exhaust top	●	●	●	●	●	●	●	●	○	○	○	○	○	○	○	○	○	○	○	○	○	○	○
Cleaning	Manual	●	●	●	●	-	-	-	-	-	-	-	-	-	-	-	-	-	-	-	-	-	-	
	Manual rotation	○	○	○	○	●	●	●	●	-	-	-	-	-	-	-	-	-	-	-	-	-	-	
	Jet-Pulse	○	○	-	○	○	○	○	○	●	●	●	●	●	●	●	●	●	●	●	●	●	●	
Filter	Revision sheet	●	●	●	●	●	●	●	●	●	●	●	●	●	●	●	●	●	●	●	●	●	●	
	Door	○	○	○	○	○	○	○	○	○	○	○	○	○	○	○	○	○	○	○	○	○	○	
	Filter polyester	○	○	○	○	○	○	○	○	○	○	○	○	○	○	○	○	○	○	○	○	○	○	
	Filter polyester, antistatic	●	●	●	●	●	●	●	●	●	●	●	●	●	●	●	●	●	●	●	●	●	●	
	Filter oil/water repellent	○	○	○	○	○	○	○	○	○	○	○	○	○	○	○	○	○	○	○	○	○	○	
	Filter Teflon-coated	○	○	○	○	○	○	○	○	○	○	○	○	○	○	○	○	○	○	○	○	○	○	
	Filter grooved	○	○	○	○	○	○	○	○	○	○	○	○	○	○	○	○	○	○	○	○	○	○	
Removal/mobility	Drawer	●	●	○	○	○	○	○	○	-	○	○	-	-	-	-	-	-	-	-	-	-	-	
	Dust collection container 30 l	○	○	-	-	-	-	-	-	-	-	-	-	-	-	-	-	-	-	-	-	-	-	
	Dust collection container 50 l	-	-	●	●	●	●	-	-	-	-	-	-	-	-	-	-	-	-	-	-	-	-	
	Dust collection container 80 l	-	-	-	-	-	-	●	●	●	●	●	●	●	●	●	●	●	●	●	●	●	●	
	Dust collection container 130 l	-	-	○	○	○	○	-	-	-	-	-	-	-	-	-	-	-	-	-	-	-	-	
	Standing feet	●	●	●	●	●	●	●	●	●	●	●	●	●	●	●	●	●	●	●	●	●	●	
	Forklift tabs	○	○	●	●	●	●	●	●	○	○	○	○	○	○	○	○	○	○	○	○	○	○	
	Wheels ø 100 mm	○	○	-	-	-	-	-	-	-	-	-	-	-	-	-	-	-	-	-	-	-	-	
	Wheels ø 160 mm	-	-	○	○	○	○	○	○	○	-	○	○	-	-	-	○	-	-	-	-	-	-	
	Wall holder	○	○	○	○	○	○	-	-	-	-	-	-	-	-	-	-	-	-	-	-	-	-	
Removal level 0	○	○	○	○	○	○	○	○	○	-	○	○	-	-	-	○	-	-	-	-	-	-		
Control	M-line (medium)	●	●	●	●	●	●	●	○	-	-	-	-	-	-	-	-	-	-	-	-	-		
	H-line (high)	○	○	○	○	○	○	○	○	●	-	●	●	-	-	-	●	-	-	-	-	-		
	S-Line (standard)	-	-	-	-	-	-	○	○	○	●	○	○	●	●	●	○	●	●	●	●	●		
	K-line (comfort)	-	-	-	-	-	-	○	○	○	○	○	○	○	○	○	○	○	○	○	○	○		
	P-Line (Premium)	○	○	○	○	○	○	○	○	○	○	○	○	○	○	○	○	○	○	○	○	○		

● Standard, ○ optionally available, - not available

Series IEP, HD

Description	IEP 2-1-1 / 0.7 HD	IEP 2-2-1 / 1 T	IEP 3-2-1 / 1.3 HD	IEP 3-2-1 / 2 T	IEP 3-2-1 / 2.2 HD	IEP 3-2-1 / 3 T	IEP 3-2-1 / 3 HD	IEP 8-1-2 / 4.0 HD	IEP 15-2-2 / 5.5 HD	IEP 15-2-2 / 8.5 HD	IEP 15-2-2 / 12.5 HD
-------------	--------------------	-----------------	--------------------	-----------------	--------------------	-----------------	------------------	--------------------	---------------------	---------------------	----------------------

Exhaust	Active coal	○	○	○	○	○	○	○	○	○	○
	H-13 filter	○	○	○	○	○	○	○	○	○	○
	Sound insulation housing	●	●	●	●	●	●	●	●	●	●
	Exhaust sideways	○	○	○	○	○	○	○	○	○	○
	Exhaust top	●	●	●	●	●	●	●	●	●	●

Cleaning	Manual	●	●	●	●	●	●	-	-	-	-
	Manual rotation	○	○	○	○	○	○	●	●	●	●
	Jet-Pulse	○	○	○	○	○	○	-	○	○	○

Filter	Revision sheet	●	●	●	●	●	●	●	●	●	●
	Door	○	○	○	○	○	○	○	○	○	○
	Filter polyester	○	○	○	○	○	○	○	○	○	○
	Filter polyester, antistatic	●	●	●	●	●	●	●	●	●	●
	Filter oil/water repellent	○	○	○	○	○	○	○	○	○	○
	Filter Teflon-coated	○	○	○	○	○	○	○	○	○	○
Filter grooved	○	○	○	○	○	○	○	○	○	○	

Removal/mobility	Drawer	●	●	●	●	●	●	●	○	○	○	○
	Dust collection container 30 l	○	○	○	○	○	○	○	-	-	-	-
	Dust collection container 50 l	-	-	-	-	-	-	-	●	●	●	●
	Dust collection container 130 l	-	-	-	-	-	-	-	○	○	○	○
	Standing feet	●	●	●	●	●	●	●	●	●	●	●
	Forklift tabs	-	-	-	-	-	-	-	●	●	●	●
	Wheels ø 100 mm	○	○	○	○	○	○	○	-	-	-	-
	Wheels ø 160 mm	-	-	-	-	-	-	-	○	○	○	○
	Wall holder	○	○	○	○	○	○	○	○	○	○	○
Removal level 0	○	○	○	○	○	○	○	○	○	○	○	

Control	L-Line (Low)	-	●	-	●	-	●	-	-	-	-	
	M-line (medium)	●	-	●	-	●	-	●	●	●	-	
	H-line (high)	○	○	○	○	○	○	○	○	○	-	
	S-Line (standard)	-	-	-	-	-	-	-	-	-	●	●
	K-line (comfort)	-	-	-	-	-	-	-	-	-	○	○
	P-Line (Premium)	○	○	○	○	○	○	○	○	○	○	○

● Standard, ○ optionally available, - not available

Industrial deduster type IES, MD

Series IES, MD



Dust



Granulate



Chips

Industrial dedusters IES MD are produced modularly in eight sizes.

An integrated pre-separator protects the filters.

Permanent filters of dust class "M" ensure long service lives and low operating costs. Different filter properties make it possible to extract nearly any medium.

Cleaning takes place manually, or according to the jet pulse procedure, depending on design.

Collected dusts are removed into a mobile dust collection container.

The static and dynamic propeller makes the fan run really smoothly. It is powered directly and suitable for 3-shift operation.

Various controls can be chosen depending on size.

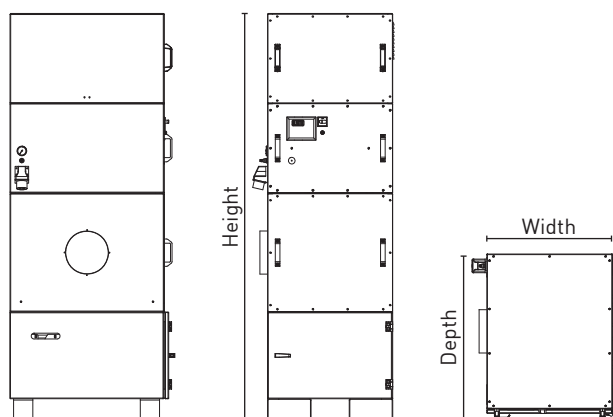


Figure shows options

Type	Condenser	Volume flow	Vacuum	Socket \varnothing	Filter area	Sizes (WxDxH)	Construction size	Weight	Order no.
	in kW/V/Hz	in m ³ /h (max.)	in Pa (max.)	in mm	in m ²	in mm (approx.)	(BG)	in kg (approx.)	
IES 1-4-1 / 0.37 MD	0.37/400/50	750	1,450	80	1	650 x 550 x 1,745	1	90	IES0010037
IES 1-4-1 / 0,55 MD	0.55/400/50	1,500	1,610	100	1	650 x 550 x 1,745	1	90	IES0010055
IES 1-4-1 / 1.1 MD	1.1/400/50	2,400	2,400	150	2	970 x 800 x 1,880	2	200	IES0020110
IES 4-8-2 / 2.2 MD	2.2/400/50	4,600	2,800	160	4	970 x 800 x 2,800	2	200	IES0040220
IES 4-8-2 / 3.0 MD	3.0/400/50	5,200	3,100	200	4	970 x 880 x 2,800	2	200	IES0040300
IES 5-20-3 / 4.0 MD	4.0/400/50	6,100	3,150	224	5	1,470 x 800 x 2,395	3	890	IES0050400
IES 10-20-3 / 5.5 MD	5.5/400/50	8,100	3,400	300	10	1,470 x 800 x 2,995	3	890	IES0100500
IES 10-20-3 / 7.5 MD	7.5/400/50	10,500	3,800	355	10	1,470 x 800 x 2,995	3	890	IES0100750
IES 10-20-3 / 11 MD	11/400/50	13,800	3,700	450	10	1,470 x 800 x 3,195	3	900	IES0101100
IES 18-35-5 / 11 MD	11/400/50	13,800	3,700	450	18	1,455 x 1,455 x 3,630	5	1,380	IES0181100
IES 25-49-6 / 15 MD	15/400/50	19,200	3,750	500	25	1,870 x 1,455 x 3,630	6	1,720	IES0251500
IES 35-70-7 / 18.5 MD	18.5/400/50	24,700	3,500	560	35	1,870 x 1,870 x 3,990	7	1,870	IES0321850
IES 50-100-8 / 22 MD	22/400/50	28,100	3,600	600	50	2,285 x 1,870 x 3,990	8	1,980	IES0452200

For options, see pages 22-23



IES 25-49-6 / 15 MD
with removal via
cell wheel lock and
cyclone pre-separator



IES with
hose filters

Your advantages at a glance

- ▶ Low operating costs by cleanable permanent filters of the dust class "M" (99.98%)
- ▶ Minimum filter application by integrated pre-separator
- ▶ Many optional and expansion options by modular build
- ▶ Simple emptying by movable dust collection container
- ▶ Indoor and outdoor setup possible by high-quality powder coating (from BG 3 onwards)
- ▶ All components suitable for 3-shift operation
- ▶ Stable steel sheet construction



IES with
Summer/winter
switching

Industrial deduster type IES, HD

Series IES, HD



Dust



Granulate



Chips

Industrial dedusters IES HD are produced modularly in eleven performance sizes.

An integrated pre-separator protects the filters.

Permanent filters of dust class "M" ensure long service lives and low operating costs. Different filter properties make it possible to extract nearly any medium.

Cleaning takes place manually, or according to the jet pulse procedure, depending on design.

Collected dusts are removed into a mobile dust collection container.

Using different compaction techniques makes the device suitable for anything from sporadic use to permanent use.

Various controls can be chosen depending on size.

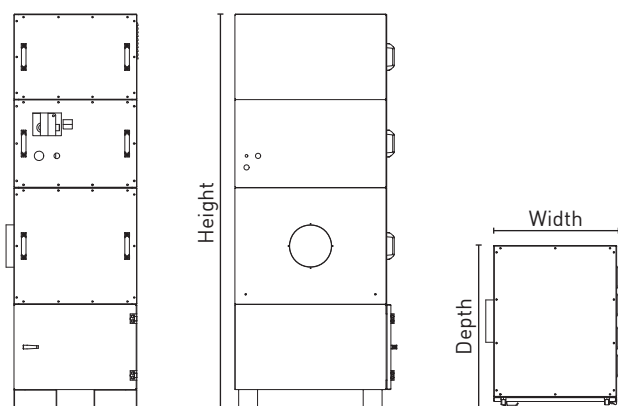


Figure shows options

Type	Condenser	Volume flow	Vacuum	Socket \varnothing	Filter area	Sizes (WxDxH)	Construction size	Weight	Order no.
	in kW/V/Hz	in m ³ /h (max.)	in Pa (max.)	in mm	in m ²	in mm (approx.)	(BG)	in kg (approx.)	
IES 1-4-1 / 0.7 HD	0.7/400/50	140	12,000	50	1	650 x 550 x 1,730	1	50	IES0010070
IES 1-4-1 / 1 T	1.0/230/50	190	22,000	40	1	650 x 550 x 1,230	1	68	IES0010100
IES 1-4-1 / 1.3 HD	1.3/400/50	210	17,000	63	1	650 x 550 x 1,730	1	68	IES0010130
IES 1-4-1 / 2 T	2.0/230/50	380	22,000	50	1	650 x 550 x 1,230	1	76	IES0010200
IES 1-4-1 / 2.2 HD	2.2/400/50	315	19,000	70	1	650 x 550 x 1,730	1	76	IES0010220
IES 1-4-1 / 3.0 HD	3.0/400/50	315	26,000	70	1	650 x 550 x 1,730	1	86	IES0010030
IES 2-8-2 / 3 T	3.0/230/50	570	22,000	100	2	970 x 800 x 1,680	2	195	IES0020300
IES 2-8-2 / 4.0 HD	4.0/400/50	530	20,000	100	2	970 x 800 x 2,245	2	137	IES0020400
IES 2-8-2 / 5.5 HD	5.5/400/50	530	30,000	100	2	970 x 800 x 2,245	2	146	IES0020550
IES 4-8-2 / 8.5 HD	8.5/400/50	1,050	19,000	125	4	970 x 800 x 2,245	2	195	IES0040850
IES 4-8-2 / 12.5 HD	12.5/400/50	1,050	29,000	125	4	970 x 800 x 2,245	2	218	IES0041250

For options, see pages 22-23



IES 4-8-2 / 8.5 HD

Your advantages at a glance

- ▶ Even vacuum from high-quality condensers
- ▶ Low operating costs by cleanable permanent filters of the dust class "M" (99.98%)
- ▶ Minimum filter application by integrated pre-separator
- ▶ Many optional and expansion options by modular build
- ▶ Simple emptying by movable dust collection container
- ▶ Suitable as type HD for 3-shift operation
- ▶ Stable steel sheet construction

Equipment and Options

Series IES, MD

Description	IES 1-4-1 / 0.37 MD	IES 1-4-1 / 0.55 MD	IES 2-8-2 / 1.1 MD	IES 4-8-2 / 2.2 MD	IES 4-8-2 / 3.0 MD	IES 5-20-3 / 4.0 MD	IES 10-20-3 / 5.5 MD	IES 10-20-3 / 7.5 MD	IES 10-20-3 / 11 MD	IES 18-35-5 / 11 MD	IES 25-49-6 / 15 MD	IES 32-63-7 / 18.5 MD	IES 45-90-8 / 22 MD
-------------	---------------------	---------------------	--------------------	--------------------	--------------------	---------------------	----------------------	----------------------	---------------------	---------------------	---------------------	-----------------------	---------------------

Exhaust	Active coal	○	○	○	○	○	○	○	○	○	○	○	○
	H-13 filter	○	○	○	○	○	○	○	○	○	○	○	○
	Sound insulation housing	●	●	●	●	●	●	●	●	○	○	○	○
	Exhaust sideways	○	○	○	○	○	○	○	○	○	●	●	●
	Exhaust top	●	●	●	●	●	●	●	●	○	○	○	○

Cleaning	Manual	●	●	●	●	●	○	○	○	-	-	-	-
	Jet-Pulse	○	○	○	○	○	○	●	●	●	●	●	●

Filter	Revision sheet	●	●	●	●	●	●	●	●	●	●	●	●
	Door	○	○	○	○	○	○	○	○	○	○	○	○
	Filter polyester	○	○	○	○	○	○	○	○	○	○	○	○
	Filter polyester, antistatic	●	●	●	●	●	●	●	●	●	●	●	●
	Filter oil/water repellent	○	○	○	○	○	○	○	○	○	○	○	○
	Filter Teflon-coated	○	○	○	○	○	○	○	○	○	○	○	○

Removal/mobility	Drawer	○	○	○	○	○	-	-	-	-	-	-	-
	Dust collection container 30 l	●	●	-	-	-	-	-	-	-	-	-	-
	Dust collection container 50 l	-	-	●	●	●	-	-	-	-	-	-	-
	Dust collection container 80 l	-	-	-	-	-	●	●	●	●	●	●	●
	Dust collection container 130 l	-	-	○	○	○	-	-	-	-	-	-	-
	Standing feet	●	●	●	●	●	●	●	●	●	●	●	●
	Forklift tabs	○	○	●	●	●	●	●	●	●	-	-	-
	Wheels ø 100 mm	○	○	-	-	-	-	-	-	-	-	-	-
	Wheels ø 160 mm	-	-	○	○	○	○	○	○	○	○	-	-
	Wall holder	○	○	○	-	-	-	-	-	-	-	-	-
	Removal level 0	○	○	○	○	○	○	○	○	○	○	○	○

Control	L-Line (Low)	-	-	-	-	-	-	-	-	-	-	-	-
	M-line (medium)	●	●	●	●	●	-	-	-	-	-	-	-
	H-line (high)	○	○	○	○	○	●	●	●	●	-	-	-
	S-Line (standard)	-	-	-	-	-	-	-	-	-	●	●	●
	K-line (comfort)	-	-	-	○	○	○	○	○	○	○	○	○
	P-Line (Premium)	○	○	○	○	○	○	○	○	○	○	○	○

● Standard, ○ optionally available, - not available

Series IES, HD

Description	IES 1-4-1 / 0.7 HD	IES 1-4-1 / 1 T	IES 1-4-1 / 1.3 HD	IES 1-4-1 / 2 T	IES 1-4-1 / 2.2 HD	IES 1-4-1 / 3.0 HD	IES 2-8-2 / 3 T	IES 2-8-2 / 4.0 HD	IES 2-8-2 / 5.5 HD	IES 4-8-2 / 8.5 HD	IES 4-8-2 / 12.5 HD
-------------	--------------------	-----------------	--------------------	-----------------	--------------------	--------------------	-----------------	--------------------	--------------------	--------------------	---------------------

Exhaust	Active coal	○	○	○	○	○	○	○	○	○	○
	H-13 filter	○	○	○	○	○	○	○	○	○	○
	Sound insulation housing	●	●	●	●	●	●	●	●	●	●
	Exhaust sideways	○	○	○	○	○	○	○	○	○	○
	Exhaust top	●	●	●	●	●	●	●	●	●	●

Cleaning	Manual	●	●	●	●	●	●	○	○	○	○
	Jet-Pulse	○	○	○	○	○	○	●	●	●	●

Filter	Revision sheet	●	●	●	●	●	●	●	●	●	●
	Door	○	○	○	○	○	○	○	○	○	○
	Filter polyester	○	○	○	○	○	○	○	○	○	○
	Filter polyester, antistatic	●	●	●	●	●	●	●	●	●	●
	Filter oil/water repellent	○	○	○	○	○	○	○	○	○	○
Filter Teflon-coated	○	○	○	○	○	○	○	○	○	○	

Removal/mobility	Drawer	○	○	○	○	○	○	○	○	○	○
	Dust collection container 30 l	●	●	●	●	●	●	-	-	-	-
	Dust collection container 50 l	-	-	-	-	-	-	●	●	●	●
	Dust collection container 130 l	-	-	-	-	-	-	○	○	○	○
	Standing feet	●	●	●	●	●	●	●	●	●	●
	Forklift tabs	-	-	-	-	-	-	●	●	●	●
	Wheels ø 100 mm	○	○	○	○	○	○	○	-	-	-
	Wheels ø 160 mm	-	-	-	-	-	-	○	○	○	○
	Wall holder	○	○	○	○	○	○	○	○	○	○
Removal level 0	○	○	○	○	○	○	○	○	○	○	

Control	L-Line (Low)	-	●	-	●	-	-	●	-	-	-
	M-line (medium)	●	-	●	-	●	●	-	●	-	-
	H-line (high)	○	○	○	○	○	○	○	-	●	●
	S-Line (standard)	-	-	-	-	-	-	-	-	-	-
	K-line (comfort)	-	-	-	-	-	-	-	○	○	○
	P-Line (Premium)	○	○	○	○	○	○	○	○	○	○

● Standard, ○ optionally available, - not available

Collection elements



Extraction arms

are produced with point extraction hood, polyurethane hose (heat-resistant up to 90° Celsius) and wall holder by default.

Diameters can be chosen from 80 to 180 mm and total lengths from 2 to 8 metres, as well as different attachment and option choices.

For more information on extraction arms, see pages 50-52.



Extraction tables

are produced with under-table extraction by default.

Different table widths and various options are possible.

For more information on extraction tables, see pages 53-55.



Extraction Hoods

are produced as top, bottom and side hoods (extraction walls) by default.

Different sizes and various options are possible.

For more information on extraction hoods, see page 56.



Hose systems

are produced in all DIN diameters of 32 to 600 mm by default.

Different materials, properties and connection and connecting pieces can be chosen.

For more information on hose systems, see page 57.

Accessories



cyclone pre-separator

are produced with extraction diameters of 50 to 450 mm in stable steel-sheet construction by default.

Different removal versions as well as various options are possible.

For more information on cyclone pre-separators, see pages 60-62.



Baffle-sheet pre-separators

are produced as separate pre-separators (see photograph) or as integrated pre-separators by default.

Different sizes can be chosen patching the respective suction diameters.

For more information on baffle sheet pre-separators, see page 64.



Cell wheel locks

are selected depending on dust volume/type to be removed.

Different sizes and designs can be chosen.

For more information on cell wheel locks, see page 74.



Shut-off slider

are produced in all DIN diameters of 50 to 450 mm by default.

Manual, pneumatic or motor-powered designs can be chosen.

For more information on shut-off sliders, see page 58.

Product overview



Smoke

Industrial smoke filters by ULMATEC are used in processing processes where smoke arises.

The modular build permits many options (see pages 32-33) and the devices can be individually adjusted to any purpose.

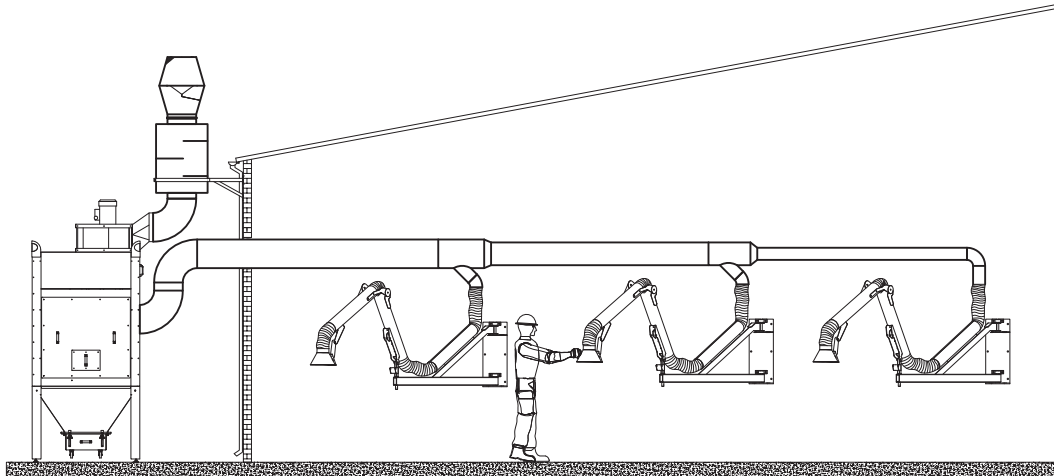
ULMATEC industrial smoke filters can be produced mobile or stationarily, or for wall attachment.

Large filter areas in connection with a low filter area load guarantee maximum service lives and thus a long lifetime. Applications with high technical demands (laser applications, plasma cutting) can be solved by using different filter media (e.g. grooved filters, filters with nano surface) by ULMATEC.

A large number of different collection elements (see pages 34-35) makes industrial smoke filters the complete central dedusting unit in your company.



Mobile industrial smoke filter IRF 8-1-2/1,1 MD with extraction arm APU 150-3-1 for single place extraction



Stationary industrial smoke filter with pipe system and extraction arms as central extraction unit



IRF 320-16-8 with MRG 37 KW

Industries

- Automotive
- Electronics and electrical engineering
- Plastic and rubber processing
- Engineering
- Metal and iron
- Public facilities
- Textile, leather, clothing
- Other

processes

- Welding
- Cutting
- Soldering
- Laser-cutting
- Separating
- Other

Industrial smoke filter type IRF MD

Series IRF MD



Smoke

Industrial smoke filters IRF MD are produced modularly in eight sizes.

Permanent filters of dust class "M" ensure long service lives and low operating costs. Different filters permit extraction of nearly any kind of smoke.

An integrated pre-separator protects the filters.

Cleaning takes place manually, with rotation cleaning or according to the jet pulse procedure, depending on design.

Collected dusts are removed into a dust collecting drawer (BG 1 and 2) or a mobile dust collection container (BG 3 and up).

The static and dynamic propeller makes the fan run really smoothly. It is powered directly and suitable for 3-shift operation.

Various controls can be chosen depending on size.



Mobile industrial smoke filter IRF 15-2-2/2.2 MD with 2x APU 150-3-1 extraction arm for single place extraction

Your advantages at a glance

- ▶ Even vacuum from high-quality condensers
- ▶ High suction output by low resistances
- ▶ Low operating costs by cleanable permanent filters of the dust class "M" (99.98%)
- ▶ Minimum filter application by integrated pre-separator
- ▶ Using different filter media permits increase of the filter area.
- ▶ Many optional and expansion options by modular build
- ▶ Simple emptying by drawer or movable dust collection container
- ▶ Indoor and outdoor setup possible by high-quality powder coating (from BG 3 onwards)
- ▶ All components suitable for 3-shift operation
- ▶ Stable steel sheet construction



Type	Condenser	Volume flow	Vacuum	Socket ø	Filter area	Sizes (WxDxH)	Construction size	Weight	Order no.
	in kW/V/Hz	in m ³ /h (max.)	in Pa (max.)	in mm	in m ²	in mm (approx.)	(BG)	in kg (approx.)	
IRF 3-2-1 / 0.37 MD	0.37/400/50	750	1,450	80	3	450 x 550 x 1,130	1	45	IRF0030037
IRF 3-2-1 / 0.55 MD	0.55/400/50	1,500	1,610	100	3	450 x 550 x 1,130	1	52	IRF0030055
IRF 8-1-2 / 1.1 MD	1.1/400/50	2,400	2,200	150	8	650 x 800 x 1,230	2	95	IRF0080110
IRF 15-2-2 / 1.1 MD	1.1/400/50	2,400	2,200	150	15	650 x 800 x 1,230	2	105	IRF0150110
IRF 15-2-2 / 2.2 MD	2.2/400/50	4,600	2,800	180	15	650 x 800 x 1,380	2	140	IRF0150220
IRF 20-2-2 / 3.0 MD	3.0/400/50	5,200	3,200	200	20	650 x 800 x 1,530	2	182	IRF0200300
IRF 40-4-3 / 4.0 MD	4.0/400/50	6,100	3,150	250	40	1,470 x 800 x 2,395	3	530	IRF0400400
IRF 80-4-3 / 4.0 MD	4.0/400/50	6,100	3,150	250	80	1,470 x 800 x 2,995	3	617	IRF0800550
IRF 80-4-3 / 5.5 MD	5.5/400/50	8,100	3,400	315	80	1,470 x 800 x 2,995	3	655	IRF0800550
IRF 80-4-3 / 7.5 MD	7.5/400/50	10,500	3,800	355	80	1,470 x 800 x 2,995	3	685	IRF0800750
IRF 100-4-3 / 11 MD	11/400/50	13,800	3,700	450	150	1,470 x 800 x 3,200	3	910	IRF1001100
IRF 120-6-5 / 11 MD	11/400/50	13,800	3,700	450	120	1,455 x 1,455 x 3,630	5	910	IRF1201100
IRF 180-9-6 / 15 MD	15/400/50	19,200	3,750	500	180	1,870 x 1,455 x 3,630	6	1,015	IRF1801500
IRF 240-12-7 / 18.5 MD	18.5/400/50	24,700	3,500	560	240	1,870 x 1,870 x 3,990	7	1,330	IRF2401850
IRF 240-12-7 / 22 MD	22/400/50	28,100	3,600	600	240	1,870 x 1,870 x 3,990	7	1,365	IRF2402200
IRF 320-16-8 / 30 MD	30/400/60	35,200	3,800	630	320	2,285 x 1,870 x 3,990	8	1,630	IRF3203000
IRF 320-16-8 / 37 MD	37/400/50	39,400	3,600	710	320	2,285 x 1,870 x 3,990	8	1,710	IRF3203700

Industrial smoke filter type IRF HD

Series IRF HD



Smoke

Industrial smoke filters IRF HD are produced modularly in eleven performance sizes. Permanent filters of dust class "M" ensure long service lives and low operating costs. Different filters permit extraction of nearly any kind of smoke.

An integrated pre-separator protects the filters.

Cleaning takes place manually, with rotation cleaning or according to the jet pulse procedure, depending on size and design.

Collected dusts are removed into a drawer.

Using different compaction techniques makes the device suitable for anything from sporadic use to permanent use.

Various controls can be chosen depending on size.



IRF 15-2-2 / 8.5 HD
with special design, extraction arm and shut-off slider

Your advantages at a glance

- ▶ Even vacuum from high-quality condensers
- ▶ Low operating costs by cleanable permanent filters of the dust class "M" (99.98%)
- ▶ Minimum filter application by integrated pre-separator
- ▶ Many optional and expansion options by modular build
- ▶ Using different filter media permits increase of the filter area.
- ▶ Simple emptying by dust collection drawer
- ▶ Suitable as type HD for 3-shift operation
- ▶ Stable steel sheet construction



Type	Condenser	Volume flow	Vacuum	Socket ø	Filter area	Sizes (WxDxH)	Construction size	Weight	Order no.
	in kW/V/Hz	in m ³ /h (max.)	in Pa (max.)	in mm	in m ²	in mm (approx.)	(BG)	in kg (approx.)	
IRF 2-1-1 / 0.7 HD	0.7/400/50	140	12,000	50	1.6	450 x 550 x 1,130	1	50	IRF0020070
IRF 2-2-1 / 1 T	1.0/230/50	190	22,000	40	1.6	450 x 550 x 880	1	68	IRF002010T
IRF 3-2-1 / 1.3 HD	1.3/400/50	210	17,000	50	3.2	450 x 550 x 1,130	1	78	IRF0030130
IRF 3-2-1 / 2 T	2.0/230/50	380	22,000	50	3.2	450 x 550 x 880	1	72	IRF003020T
IRF 3-2-1 / 2.2 HD	2.2/400/50	315	19,000	50	3.2	450 x 550 x 1,280	1	86	IRF0030220
IRF 3-2-1 / 3 T	3.0/230/50	570	22,000	80	3.2	450 x 550 x 880	1	76	IRF003030T
IRF 3-2-1 / 3 HD	3.0/400/50	315	26,000	70	3.2	450 x 550 x 1,280	1	98	IRF0030300
IRF 4-2-1 / 2 T	2.0/230/50	380	22,000	50	4	450 x 550 x 880	1	72	IRF004020T
IRF 8-1-2 / 4.0 HD	4.0/400/50	530	20,000	70	8	650 x 800 x 1,530	2	138	IRF0080400
IRF 15-2-2 / 5.5 HD	5.5/400/50	530	30,000	70	8	650 x 800 x 1,530	2	152	IRF0150550
IRF 15-2-2 / 8.5 HD	8.5/400/50	1,050	19,000	125	15	650 x 800 x 1,730	2	172	IRF0150850
IRF 15-2-2 / 12.5 HD	12.5/400/50	1,050	29,000	125	15	650 x 800 x 1,730	2	188	IRF0151250

For options, see pages 32-33

Equipment and Options

Series IRF MD

Description	IRF 3-2-1 / 0.37 MD IRF 4-2-1 / 0.37 MD	IRF 3-2-1 / 0.55 MD IRF 4-2-1 / 0.55 MD	IRF 8-1-2 / 1.1 MD IRF 9-1-2 / 1.1 MD	IRF 15-2-2 / 1.1 MD IRF 18-2-2 / 1.1 MD	IRF 15-2-2 / 2.2 MD IRF 18-2-2 / 2.2 MD	IRF 20-2-2 / 3.0 MD IRF 26-2-2 / 3.0 MD	IRF 40-2-3 / 4.0 MD IRF 50-2-3 / 4.0 MD	IRF 80-4-3 / 5.5 MD IRF 100-4-3 / 5.5 MD	IRF 80-4-3 / 7.5 MD IRF 100-4-3 / 7.5 MD	IRF 100-4-3 / 11 MD	IRF 120-6-5 / 11 MD IRF 150-6-5 / 7.5 MD	IRF 180-9-6 / 15 MD IRF 225-9-6 / 15 MD	IRF 240-12-7 / 18.5 MD IRF 300-12-7 / 18.5 MD	IRF 240-12-7 / 22 MD IRF 300-12-7 / 22 MD	IRF 320-16-8 / 30 MD IRF 400-16-8 / 30 MD	IRF 320-16-8 / 37 MD IRF 400-16-8 / 37 MD
-------------	--	--	--	--	--	--	--	---	---	---------------------	---	--	--	--	--	--

Exhaust	Active coal	○	○	○	○	○	○	○	○	○	○	○	○	○	○	○	○
	H-13 filter	○	○	○	○	○	○	○	○	○	○	○	○	○	○	○	○
	Sound insulation housing	●	●	●	●	●	●	●	●	●	●	○	○	○	○	○	○
	Exhaust sideways	○	○	○	○	○	○	○	○	○	○	●	●	●	●	●	●
	Exhaust top	●	●	●	●	●	●	●	●	●	●	○	○	○	○	○	○

Cleaning	Manual	●	●	●	●	○	○	-	-	-	-	-	-	-	-	-	-
	Manual rotation	○	○	○	○	●	●	●	-	-	-	-	-	-	-	-	-
	Jet-Pulse	○	○	-	○	○	○	○	●	●	●	●	●	●	●	●	●

Filter	Revision sheet	●	●	●	●	●	●	●	●	●	●	●	●	●	●	●	●
	Door	○	○	○	○	○	○	○	○	○	○	○	○	○	○	○	○
	Filter polyester	●	●	●	●	●	●	●	●	●	●	●	●	●	●	●	●
	Filter polyester, antistatic	○	○	○	○	○	○	○	○	○	○	○	○	○	○	○	○
	Filter oil/water repellent	○	○	○	○	○	○	○	○	○	○	○	○	○	○	○	○
	Filter Teflon-coated	○	○	○	○	○	○	○	○	○	○	○	○	○	○	○	○
	Filter grooved	○	○	○	○	○	○	○	○	○	○	○	○	○	○	○	○
Filter Nano	○	○	○	○	○	○	○	○	○	○	○	○	○	○	○	○	

Removal/mobility	Drawer	●	●	●	●	●	●	-	-	-	-	-	-	-	-	-	-	
	Dust collection container 30 l	○	○	-	-	-	-	-	-	-	-	-	-	-	-	-	-	
	Dust collection container 50 l	-	-	○	○	○	○	-	-	-	-	-	-	-	-	-	-	
	Dust collection container 80 l	-	-	-	-	-	-	●	●	●	●	●	●	●	●	●	●	
	Dust collection container 130 l	-	-	○	○	○	○	-	-	-	-	-	-	-	-	-	-	
	Standing feet	●	●	●	●	●	●	●	●	●	●	●	●	●	●	●	●	●
	Forklift tabs	○	○	○	○	○	○	●	●	●	○	-	-	-	-	-	-	
	Wheels ø 100 mm	○	○	○	○	○	○	-	-	-	-	-	-	-	-	-	-	
	Wheels ø 160 mm	-	-	○	○	○	○	○	○	○	○	-	-	-	-	-	-	
	Wall holder	○	○	○	○	○	○	○	○	○	○	-	-	-	-	-	-	
Removal level 0	○	○	○	○	○	○	○	○	○	○	○	○	○	○	○	○	○	

Control	M-line (medium)	●	●	●	●	●	●	-	-	-	-	-	-	-	-	-	-
	H-line (high)	○	○	○	○	○	○	●	●	●	●	●	-	-	-	-	-
	S-Line (standard)	-	-	-	-	-	-	-	-	-	-	-	●	●	●	●	●
	K-line (comfort)	-	-	-	-	-	-	○	○	○	○	○	○	○	○	○	○
	P-Line (Premium)	○	○	○	○	○	○	○	○	○	○	○	○	○	○	○	○

● Standard, ○ optionally available, - not available

Series IRF HD

Description	IRF 2-1-1 / 0.7 HD	IRF 2-2-1 / 1 T	IRF 3-2-1 / 1.3 HD IRF 4-2-1 / 1.3 HD (N)	IRF 3-2-1 / 2 T IRF 4-2-1 / 2 T (N)	IRF 3-2-1 / 2.2 HD IRF 4-2-1 / 2.2 HD (N)	IRF 3-2-1 / 3 T IRF 4-2-1 / 3 T (N)	IRF 3-2-1 / 3 HD IRF 4-2-1 / 3 HD (N)	IRF 8-1-2 / 4.0 HD IRF 9-1-2 / 4.0 HD (N)	IRF 15-2-2 / 5.5 HD IRF 18-2-2 / 5.5 HD (N)	IRF 15-2-2 / 8.5 HD IRF 18-2-2 / 8.5 HD (N)	IRF 15-2-2 / 12.5 HD IRF 18-2-2 / 12.5 HD (N)
-------------	--------------------	-----------------	--	--	--	--	--	--	--	--	--

Exhaust	Active coal	○	○	○	○	○	○	○	○	○	○
	H-13 filter	○	○	○	○	○	○	○	○	○	○
	Sound insulation housing	●	●	●	●	●	●	●	●	●	●
	Exhaust sideways	○	○	○	○	○	○	○	○	○	○
	Exhaust top	●	●	●	●	●	●	●	●	●	●

Cleaning	Manual	●	●	●	●	●	●	○	○	○	○
	Manual rotation	○	○	○	○	○	○	○	●	●	●
	Jet-Pulse	○	○	○	○	○	○	○	○	○	○

Filter	Revision sheet	●	●	●	●	●	●	●	●	●	●
	Door	○	○	○	○	○	○	○	○	○	○
	Filter polyester	●	●	●	●	●	●	●	●	●	●
	Filter polyester, antistatic	○	○	○	○	○	○	○	○	○	○
	Filter oil/water repellent	○	○	○	○	○	○	○	○	○	○
	Filter Teflon-coated	○	○	○	○	○	○	○	○	○	○
	Filter grooved	○	○	○	○	○	○	○	○	○	○
	Filter Nano	○	○	○	○	○	○	○	○	○	○

Removal/mobility	Drawer	●	●	●	●	●	●	●	●	●	●
	Dust collection container 30 l	○	○	○	○	○	○	○	-	-	-
	Dust collection container 50 l	-	-	-	-	-	-	-	○	○	○
	Dust collection container 130 l	-	-	-	-	-	-	-	○	○	○
	Standing feet	●	●	●	●	●	●	●	●	●	●
	Forklift tabs	○	○	○	○	○	○	○	○	○	○
	Wheels ø 100 mm	○	○	○	○	○	○	○	○	○	-
	Wheels ø 160 mm	-	-	-	-	-	-	-	○	○	○
	Wall holder	○	○	○	○	○	○	○	○	○	○
	Removal level 0	○	○	○	○	○	○	○	○	○	○

Control	L-Line (Low)	-	●	-	●	-	●	-	-	-	-
	M-line (medium)	●	-	●	-	●	-	●	●	-	-
	H-line (high)	○	○	○	○	○	○	○	○	●	●
	S-Line (standard)	-	-	-	-	-	-	-	-	-	-
	K-line (comfort)	-	-	-	-	-	-	-	-	-	○
	P-Line (Premium)	○	○	○	○	○	○	○	○	○	○

● Standard, ○ optionally available, - not available

Collection elements



Extraction arms

are produced with point extraction hood, polyurethane hose (heat-resilient up to 90° Celsius) and wall holder by default.

Diameters can be chosen from 80 to 180 mm and total lengths from 2 to 8 metres, as well as different attachment and option choices.

For more information on extraction arms, see pages 50-52.



Extraction tables

are produced with under-table extraction by default.

Different table widths and various options are possible.

For more information on extraction tables, see pages 53-55.



Extraction Hoods

are produced as top, bottom and side hoods (extraction walls) by default.

Different sizes and various options are possible.

For more information on extraction hoods, see page 56.



Precoater devices

are used to extend filter service lives.

in many processes with smoke formation, the Precoate medium prevents ingress of the fine dust into the pores of the filter medium.

Different precoater modes, dosage volumes and frequencies may be set with our controls.

Accessories



cyclone pre-separator

are produced with extraction diameters of 50 to 450 mm in stable steel-sheet construction by default.

Different removal versions as well as various options are possible.

For more information on cyclone pre-separators, see pages 60-62.



Baffle-sheet pre-separators

are produced as separate pre-separators (see photograph) or as integrated pre-separators by default.

Different sizes can be chosen patching the respective suction diameters.

For more information on baffle sheet pre-separators, see page 64.



Cell wheel locks

are selected depending on dust volume/type to be removed.

Different sizes and designs can be chosen.

For more information on cell wheel locks, see page 74.



Shut-off slider

are produced in all DIN diameters of 50 to 450 mm by default.

Manual, pneumatic or motor-powered designs can be chosen.

For more information on shut-off sliders, see page 58.

Industrial extractor type IS

Product overview



Dust



Granulate



Chips



Liquid

Industrial extractors by ULMATEC are used in finishing processes where dust, chips, granulate or liquids arise.

The modular build permits many options (see pages 39-40) and the devices can be individually adjusted to any purpose based on different filter types (**cartridge filter** = ISP, hose filter = ISS).

ULMATEC industrial extractors can be produced mobile or stationarily, or for wall attachment.

Large filter areas in connection with a low filter area load guarantee maximum service lives and thus a long lifetime.

A large number of different collection elements (see page 56) makes it possible to use industrial extractors to collect nearly any dust.



Industrial extractor
ISP 3-3-1 / 2.2 HD

Industries

- Waste and recycling management, environmental technology
- Automotive
- Chemistry, pharmaceuticals, minerals, cosmetics
- Service
- Print shop and book binding
- Wood processing and finishing industry
- Plastic, rubber processing and finishing industry
- Engineering
- Metal and iron
- Food and luxury goods
- Paper, tissue, cardboard
- Other

processes

- Transport
- Drilling
- Turning
- Milling
- Thread-cutting
- Engraving
- Polishing
- Sawing
- Grinding
- Blasting
- Other

Series ISP



Dust



Granulate



Chips



Liquid

Industrial extractors ISP are modularly produced in eleven performance sizes with permanent filter cartridges. An integrated pre-separator protects the filters.

Permanent filters of dust class "M" ensure long service lives and low operating costs. Different filters make it possible to extract nearly any medium.

Cleaning takes place manually, with rotation cleaning or according to the jet pulse procedure, depending on design.

Collected dusts are removed into a mobile dust collection container.

Using different compaction techniques makes the device suitable for anything from sporadic use to permanent use.

Various controls can be chosen depending on size.

Your advantages at a glance

- ▶ Even vacuum from high-quality condensers
- ▶ Low operating costs by cleanable permanent filters of the dust class "M" (99.98%)
- ▶ Minimum filter application by integrated pre-separator
- ▶ Many optional and expansion options by modular build
- ▶ Simple emptying by movable dust collection container
- ▶ All components suitable for 3-shift operation (type SK)
- ▶ Stable steel sheet construction

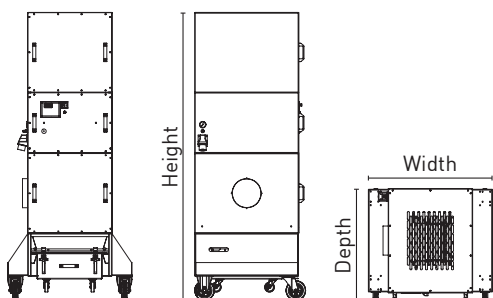


Figure shows options

Type	Condenser	Volume flow	Vacuum	Socket ø	Filter area	Sizes (WxDxH)	Construction size	Weight	Order no.
	in kW/V/Hz	in m³/h (max.)	in Pa (max.)	in mm	in m²	in mm (approx.)	(BG)	in kg (approx.)	
ISP 2-1-1 / 0.7 SK	0.7/400/50	140	12,000	40	1.6	650 x 550 x 1,480	1	50	ISP2007S
ISP 2-1-1 / 1 T	1.0/400/50	190	22,000	40	1.6	650 x 550 x 1,380	1	41	ISP2010T
ISP 3-2-1 / 1.3 SK	1.3/400/50	210	17,000	50	3.2	650 x 550 x 1,480	1	68	ISP3013S
ISP 3-2-1 / 2 T	2.0/400/50	380	22,000	50	3.2	650 x 550 x 1,380	1	44	ISP3020T
ISP 3-2-1 / 2.2 SK	2.2/400/50	315	19,000	50	3.2	650 x 550 x 1,480	1	76	ISP3022S
ISP 3-2-1 / 3 T	3.0/400/50	570	22,000	100	3.2	650 x 550 x 1,380	1	56	ISP3030T
ISP 3-2-1 / 3.0 SK	3.0/400/50	315	26,000	70	3.2	650 x 550 x 1,630	1	86	ISP3030S
ISP 8-1-2 / 4.0 SK	4.0/400/50	530	20,000	100	7.5	970 x 800 x 1,730	2	147	ISP8040S
ISP 8-1-2 / 5.5 SK	5.5/400/50	530	30,000	100	7.5	970 x 800 x 1,730	2	156	ISP8055S
ISP 8-1-2 / 8.5 SK	8.5/400/50	1,050	19,000	125	7.5	970 x 800 x 1,980	2	172	ISP8085S
ISP 8-1-2 / 12.5 SK	12.5/400/50	1,050	29,000	125	7.5	970 x 800 x 1,980	2	185	ISP8125S

For options, see pages 39-40

Industrial extractor type ISS

Series ISS



Dust



Granulate



Chips



Liquid

Industrial extractors ISS are modularly produced in eleven performance sizes with filter hoses. An integrated pre-separator protects the filters.

Permanent filters of dust class "M" ensure long service lives and low operating costs. Different filters make it possible to extract nearly any medium.

Cleaning takes place manually, or according to the jet pulse procedure, depending on design.

Collected dusts are removed into a mobile dust collection container.

Using different compaction techniques makes the device suitable for anything from sporadic use to permanent use.

Various controls can be chosen depending on size.

Your advantages at a glance

- ▶ Even vacuum from high-quality condensers
- ▶ Low operating costs by cleanable permanent filters of the dust class "M" (99.98%)
- ▶ Minimum filter application by integrated pre-separator
- ▶ Many optional and expansion options by modular build
- ▶ Simple emptying by movable dust collection container
- ▶ All components suitable for 3-shift operation (type SK)
- ▶ Stable steel sheet construction

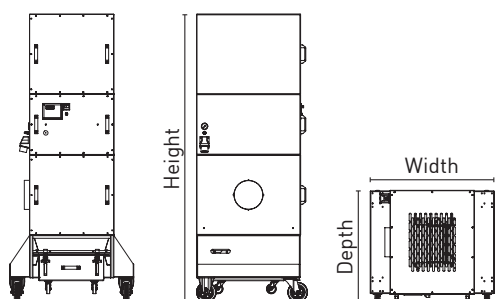


Figure shows options

Type	Condenser	Volume flow	Vacuum	Socket \varnothing	Filter area	Sizes (WxDxH)	Construction size	Weight	Order no.
	in kW/V/Hz	in m ³ /h (max.)	in Pa (max.)	in mm	in m ²	in mm (approx.)	(BG)	in kg (approx.)	
ISS 1-4-1 / 0.7 SK	0.7/400/50	140	12000	50	1	650 x 550 x 1,730	1	50	ISS1007S
ISS 1-4-1 / 1 T	1.0/230/50	190	22000	40	1	650 x 550 x 1,630	1	68	ISS1010T
ISS 1-4-1 / 1.3 SK	1.3/400/50	210	17000	63	1	650 x 550 x 1,730	1	68	ISS1013S
ISS 1-4-1 / 2 T	2.0/230/50	380	22000	50	1	650 x 550 x 1,630	1	76	ISS1020T
ISS 1-4-1 / 2.2 SK	2.2/400/50	315	19000	70	1	650 x 550 x 1,830	1	76	ISS1022S
ISS 2-8-2 / 3 T	3.0/230/50	570	22000	100	2	970 x 800 x 1,730	2	105	ISS2030T
ISS 2-8-2 / 3.0 SK	3.0/400/50	315	26000	50	2	970 x 800 x 1,830	2	129	ISS4030S
ISS 2-8-2 / 4.0 SK	4.0/400/50	530	20000	100	2	970 x 800 x 2,080	2	137	ISS2040S
ISS 2-8-2 / 5.5 SK	5.5/400/50	530	30000	100	2	970 x 800 x 2,080	2	146	ISS2055S
ISS 4-8-2 / 8.5 SK	8.5/400/50	1050	19000	125	4	970 x 800 x 2,730	2	195	ISS4085S
ISS 4-8-2 / 12.5 SK	12.5/400/50	1050	29000	125	4	970 x 800 x 2,730	2	218	ISS4125S

For options, see pages 39-40

Series ISP

Description	ISP 2-1-1 / 0.7 SK	ISP 2-1-1 - / 1 T	ISP 3-2-1 / 1.3 SK	ISP 3-2-1 / 2 T	ISP 3-2-1 / 2.2 SK	ISP 3-2-1 / 3 T	ISP 3-2-1 / 3.0 SK	ISP 3-2-1 / 3.0 SK	ISP 3-2-1 / 3.0 SK	ISP 8-1-2 / 4.0 SK	ISP 8-1-2 / 5.5 SK	ISP 8-1-2 / 8.5 SK	ISP 8-1-2 / 12.5 SK
-------------	--------------------	-------------------	--------------------	-----------------	--------------------	-----------------	--------------------	--------------------	--------------------	--------------------	--------------------	--------------------	---------------------

Exhaust	Active coal	○	○	○	○	○	○	○	○	○	○	○	○
	H-13 filter	○	○	○	○	○	○	○	○	○	○	○	○
	Sound insulation housing	●	●	●	●	●	●	●	●	●	●	●	●
	Exhaust sideways	○	○	○	○	○	○	○	○	○	○	○	○
	Exhaust top	●	●	●	●	●	●	●	●	●	●	●	●

Cleaning	Manual	●	●	●	●	●	●	○	○	○	○	○
	Manual rotation	○	○	○	○	○	○	○	●	●	●	●
	Jet-Pulse	○	○	○	○	○	○	○	○	○	○	○

Filter	Revision sheet	●	●	●	●	●	●	●	●	●	●	●	●
	Door	○	○	○	○	○	○	○	○	○	○	○	○
	Filter polyester	○	○	○	○	○	○	○	○	○	○	○	○
	Filter polyester, antistatic	●	●	●	●	●	●	●	●	●	●	●	●
	Filter oil/water repellent	○	○	○	○	○	○	○	○	○	○	○	○
	Filter Teflon-coated	○	○	○	○	○	○	○	○	○	○	○	○

Removal/mobility	Drawer	○	○	○	○	○	○	○	○	○	○	○	○
	Dust collection container 30 l	●	●	●	●	●	●	●	●	-	-	-	-
	Dust collection container 50 l	-	-	-	-	-	-	-	-	●	●	●	●
	Dust collection container 130 l	-	-	-	-	-	-	-	-	○	○	○	○
	Standing feet	○	○	○	○	○	○	○	○	○	○	○	○
	Forklift tabs	○	○	○	○	○	○	○	○	●	●	●	●
	Wheels ø 100 mm	●	●	●	●	●	●	●	●	○	○	○	○
	Wheels ø 160 mm	○	○	○	○	○	○	○	○	●	●	●	●
	Wall holder	○	○	○	○	○	○	○	○	○	○	○	○
Removal level 0	○	○	○	○	○	○	○	○	○	○	○	○	

Control	L-Line (Low)	-	●	-	●	-	●	-	-	-	-	-	-
	M-line (medium)	●	-	●	-	●	-	●	●	●	-	-	-
	H-line (high)	○	-	○	-	○	-	○	○	○	●	●	●
	S-Line (standard)	-	-	-	-	-	-	-	-	-	-	-	-
	K-line (comfort)	○	-	○	-	○	-	-	-	-	●	○	○
	P-Line (Premium)	○	-	○	-	○	-	○	○	○	○	○	○

● Standard, ○ optionally available, - not available

Equipment and Options

Series ISS

Description	ISS 1-4-1 / 0.7 SK	ISS 1-4-1 / 1 T	ISS 1-4-1 / 1.3 SK	ISS 1-4-1 / 2 T	ISS 1-4-1 / 2.2 SK	ISS 1-4-1 / 3 T	ISS 2-8-2 / 3.0 SK	ISS 2-8-2 / 4.0 SK	ISS 2-8-2 / 5.5 SK	ISS 4-8-2 / 8.5 SK	ISS 4-8-2 / 12.5 SK
-------------	--------------------	-----------------	--------------------	-----------------	--------------------	-----------------	--------------------	--------------------	--------------------	--------------------	---------------------

Exhaust	Active coal	○	○	○	○	○	○	○	○	○	○
	H-13 filter	○	○	○	○	○	○	○	○	○	○
	Sound insulation housing	●	●	●	●	●	●	●	●	●	●
	Exhaust sideways	○	○	○	○	○	○	○	○	○	○
	Exhaust top	●	●	●	●	●	●	●	●	●	●

Cleaning	Manual	●	●	●	●	●	○	○	○	○	○
	Jet-Pulse	○	○	○	○	○	●	●	●	●	●

Filter	Revision sheet	●	●	●	●	●	●	●	●	●	●
	Door	○	○	○	○	○	○	○	○	○	○
	Filter polyester	○	○	○	○	○	○	○	○	○	○
	Filter polyester, antistatic	●	●	●	●	●	●	●	●	●	●
	Filter oil/water repellent	○	○	○	○	○	○	○	○	○	○
Filter Teflon-coated	○	○	○	○	○	○	○	○	○	○	

Removal/mobility	Drawer	○	○	○	○	○	○	○	○	○	○
	Dust collection container 30 l	●	●	●	●	●	●	-	-	-	-
	Dust collection container 50 l	-	-	-	-	-	-	●	●	●	●
	Dust collection container 130 l	-	-	-	-	-	-	○	○	○	○
	Standing feet	○	○	○	○	○	○	○	○	○	○
	Forklift tabs	○	○	○	○	○	○	●	●	●	●
	Wheels ø 100 mm	●	●	●	●	●	●	-	-	-	-
	Wheels ø 160 mm	○	○	○	○	○	○	●	●	●	●
	Wall holder	○	○	○	○	○	○	○	○	○	○
Removal level 0	○	○	○	○	○	○	○	○	○	○	

Control	L-Line (Low)	-	●	-	●	-	●	-	-	-	-
	M-line (medium)	●	-	●	-	●	-	●	●	-	-
	H-line (high)	○	-	○	-	○	-	○	○	●	●
	S-Line (standard)	-	-	-	-	-	-	-	-	-	-
	K-line (comfort)	○	-	○	-	○	-	○	○	○	○
	P-Line (Premium)	○	-	○	-	○	-	○	○	○	○

● Standard, ○ optionally available, - not available



Hose systems

are produced in all DIN diameters of 32 to 600 mm by default.

Different materials, properties and connection and connecting pieces can be chosen.

For more information on hose systems, see page 59.



Extraction Accessories

are offered in a great diversity by ULMATEC to cover any application.

Complete sets and individual nozzles and brushes in different diameters and designs are found on page 57.



cyclone pre-separator

are produced with extraction diameters of 50 to 450 mm in stable steel-sheet construction by default.

Different removal versions as well as various options are possible.

For more information on cyclone pre-separators, see pages 60-61.



Baffle-sheet pre-separators

are produced as separate pre-separators (see photograph) or as integrated pre-separators by default.

Different sizes can be chosen patching the respective suction diameters.

For more information on baffle sheet pre-separators, see page 64.

Oil mist separator type OES

Product overview



Mist

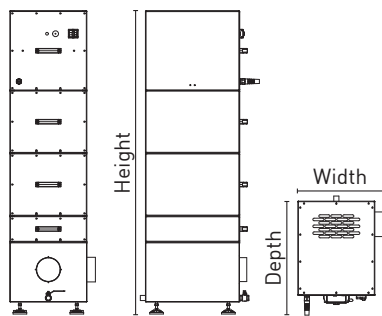
Oil mist separators OES are modularly offered in twelve performance sizes for installation on processing centres (BG 1, lying design) or as central systems.

The multi-stage filter system ensures long service lives and thus low operating costs.

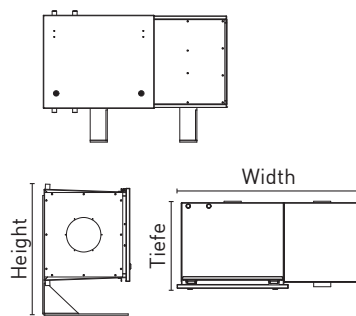
The oil mist separator is delivered completely with connection to the cooling lubricant return.



Oil mist separator installed on processing centre



Standing design



Lying design



OES 1400-200-1-1 F / 1.1 MD-L

Type	Condenser	Volume flow	Vacuum	Socket \varnothing	Sizes (WxDxH)	Construction size	Weight	Order no.
	in kW/V/Hz	in m ³ /h (max.)	in Pa (max.)	in mm	in mm (approx.)	(BG)	in kg (approx.)	
OES 500-125-1-1 F / 0.37 MD-l	0.37/400/50	750	1,450	125	1,000 x 500 x 550 / 770	1	86	OES00500-l
OES 500-125-1-1 F / 0.37 MD-s	0.37/400/50	750	1,450	125	450 x 650 x 1,675	1	96	OES00500-s
OES 700-180-1-1 F / 0.55 MD-l	0.55/400/50	1,500	1,610	140	1,000 x 500 x 550 / 770	1	86	OES00700-l
OES 700-180-1-1 F / 0.55 MD-s	0.55/400/50	1,500	1,610	140	450 x 650 x 1,675	1	96	OES00700-s
OES 1400-200-1-1 F / 1.1 MD-l	1.1/400/50	2,400	2,200	200	1,000 x 500 x 550 / 770	1	91	OES01400-1-l
OES 1400-200-1-1 F / 1.1 MD-s	1.1/400/50	2,400	2,200	200	450 x 650 x 1,775	1	101	OES01400-1-s
OES 1400-200-2-1 F / 1.1 MD-l	1.1/400/50	2,400	2,200	200	1,460 x 600 x 720 / 930	2	130	OES01400-2-l
OES 1400-200-2-1 F / 1.1 MD-s	1.1/400/50	2,400	2,200	200	650 x 800 x 2,325	2	145	OES01400-2-s
OES 2200-224-2-1 F / 2.2 MD-l	2.2/400/50	4,600	2,800	224	1,460 x 600 x 720 / 930	2	152	OES02200-l
OES 2200-224-2-1 F / 2.2 MD-s	2.2/400/50	4,600	2,800	224	650 x 800 x 2,325	2	160	OES02200-s
OES 3300-250-2-1 F / 3.0 MD-l	3.0/400/50	5,200	3,100	250	1,460 x 600 x 720 / 930	2	152	OES03300-l
OES 3300-250-2-1 F / 3.0 MD-s	3.0/400/50	5,200	3,100	250	650 x 800 x 2,325	2	160	OES03300-s
OES 4600-315-3-2 F / 4.0 MD	4.0/400/50	6,100	3,150	315	1,150 x 800 x 2,615	3	610	OES04600
OES 6200-355-3-2 F / 5.5 MD	5.5/400/50	8,100	3,400	355	1,150 x 800 x 2,615	3	655	OES06200
OES 7800-400-3-2 F / 7.5 MD	7.5/400/50	10,500	3,800	400	1,150 x 800 x 2,615	3	685	OES7800
OES 10,000-450-4-3 F / 11 MD	11/400/50	13,800	3,700	450	1,700 x 800 x 2,800	4	970	OES10000
OES 13,000-500-5-4 F / 15 MD	15/400/50	19,200	3,750	500	1,600 x 1,150 x 3,200	5	1110	OES13000
OES 15,000-560-6-6 F / 18.5 MD	18.5/400/50	24,700	3,500	560	1,700 x 1,600 x 3,400	6	1410	OES15000

(l= lying design , s= standing design)



Industries

- Automotive
- Engineering
- Metal and iron
- Public facilities
- Optics, medicine, dental
- Other

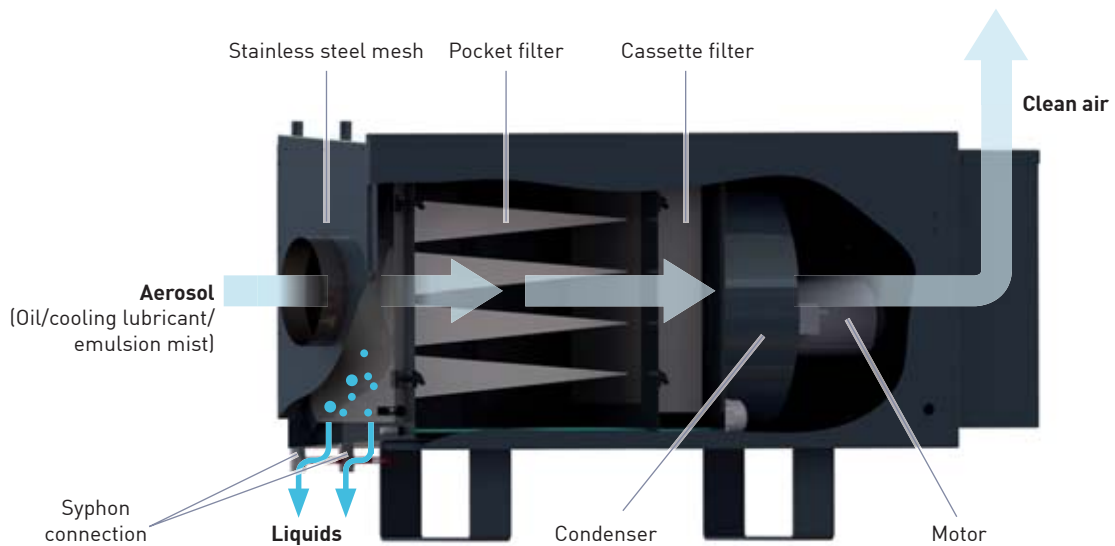
processes

- Drilling
- Turning
- Milling
- Thread-cutting
- Grinding
- Other

- Cassette filter
- Pocket filter
- Stainless steel mesh
- Extraction socket
- Drain cock for liquids



Standing design



Lying design





OES 700-140-1/0.55 MD (s=standing design) with APU 140-2-1



OES 10.000-450-6/11 MD

Your advantages at a glance

- ▶ Even vacuum from high-quality condensers
- ▶ Maximum extraction output from high-quality filter materials
- ▶ Different filter inserts available
- ▶ Universally usable by different assembly options
- ▶ All components suitable for 3-shift operation
- ▶ Stable steel sheet construction

Options

- | | |
|-------------------------|---|
| Exhaust module | <ul style="list-style-type: none">- Policing filter- Active coal- Exhaust socket rear, front, bottom, top (depending on device version) |
| Filter module | <ul style="list-style-type: none">- Connection of knurled ring system- Revision door for simplified filter change |
| Removal/mobility module | <ul style="list-style-type: none">- moving (for sizes 1, 2 and 3) |
| Other | <ul style="list-style-type: none">- Attachment of collection elements (e.g. extraction arm) |





Wet separator type NAS MD

Product overview



Dust



Chips



Liquid

Wet separators NAS MD are produced modularly in six performance sizes.

The multi-phase filtration ensures maximum separation at minimum water consumption.

Collected dusts are removed in a mobile dust collection container or washed out via a drain valve.

The fan is installed sound-insulated in the device depending on size. The static and dynamic propeller makes the fan run really smoothly.

Various controls can be chosen depending on size.

Your advantages at a glance

- ▶ High suction output by low resistances
- ▶ Maximum separation degree at very low water consumption by multi-phase filtration
- ▶ Simple emptying by drain valve and movable dust collection container
- ▶ All components suitable for 3-shift operation
- ▶ Stable steel sheet construction
- ▶ Large revision door for cleaning and maintenance work



Type	Condenser	Volume flow	Vacuum	Socket \varnothing	Sizes (WxDxH)	Con-struction size	Weight	Order no.
	in kW/V/Hz	in m ³ /h (max.)	in Pa (max.)	in mm	in mm (approx.)	(BG)	in kg (approx.)	
NAS 600-1 / 1.1 MD	1.1/400/50	2,400	2,200	100	670 x 550 x 1,785	1	320	NAS00600
NAS 1500-2 / 2.2 MD	2.2/400/50	4,600	2,800	160	970 x 800 x 2,230	2	328	NAS01500
NAS 1700-2 / 3.0 MD	3.0/400/50	5,200	3,100	180	970 x 800 x 2,230	2	335	NAS01700
NAS 3900-3 / 4.0 MD	4.0/400/50	6,100	3,150	280	1,470 x 800 x 2,725	3	356	NAS03900
NAS 4500-3 / 5.5 MD	5.5/400/50	8,100	3,400	300	1,470 x 800 x 2,725	3	378	NAS04500
NAS 6200-3 / 7.5 MD	7.5/400/500	10,500	3,800	355	1,470 x 800 x 2,725	3	402	NAS06200
NAS 7800-3 / 11 MD	11/400/50	13,800	3,700	450	1,470 x 800 x 2,725	3	600	NAS07800

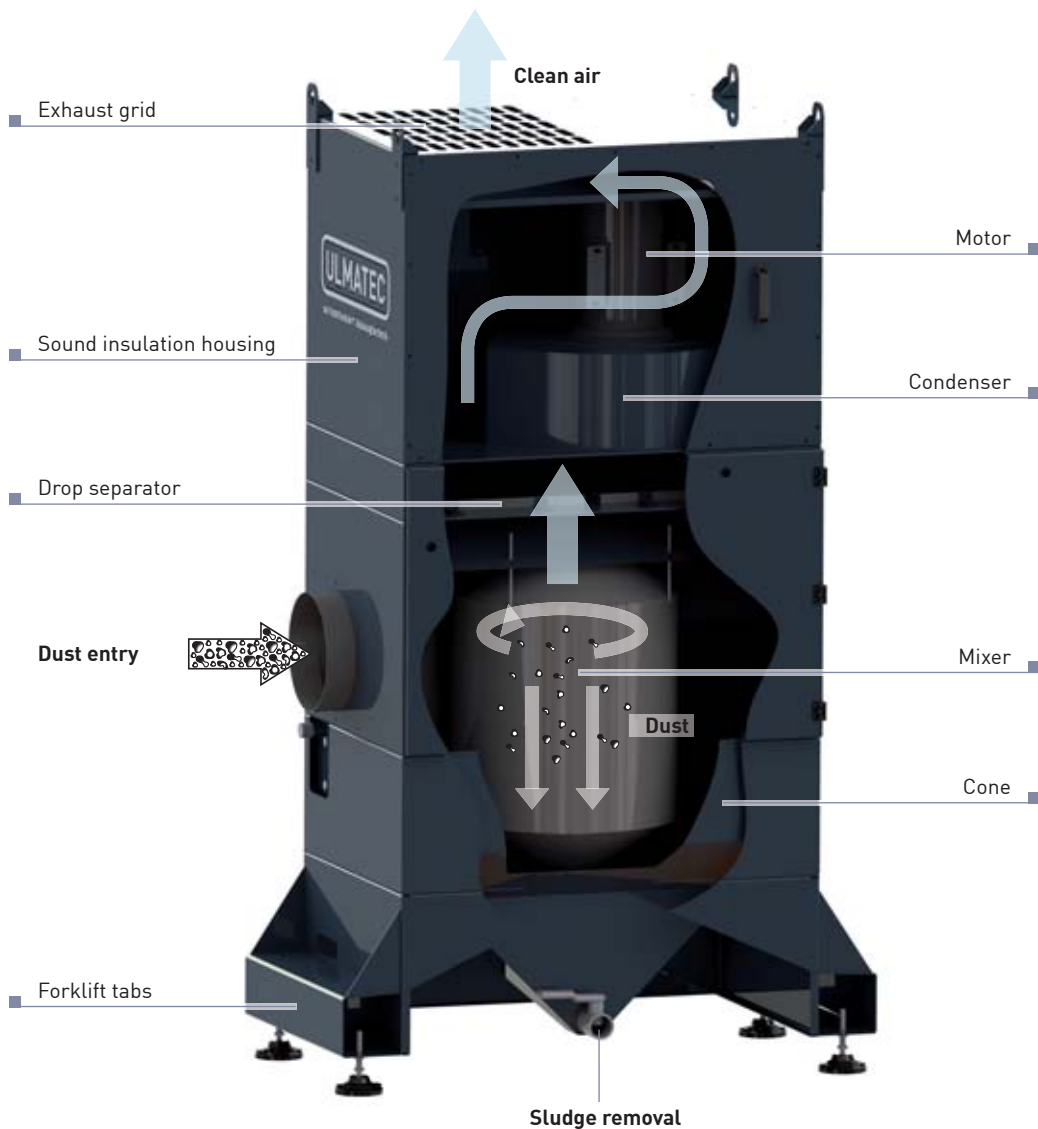


Industries

- Environment & recycling
- Plastic and rubber processing
- Engineering
- Metal and iron
- Textile, leather, clothing

Processes

- Angle grinding
- Milling
- Casting
- Sawing
- Grinding
- Separating/cutting



Industrial air extraction type ILA

Product overview



Mist

Industrial air extractions of type ILA are produced modularly in twelve performance sizes. They can be used as standalone or as central filter systems for extraction in several locations.

As a compressor, either the fans (middle pressure) or side channel compressors for high vacuum operation are installed.

The use of regenerative and replaceable filter media and their combinations permits perfect adjustment of the extraction systems to nearly any application.

Your advantages at a glance

- ▶ Best adjustment of the system to the respective application by modular build
- ▶ Maximum extraction output from high-quality filter materials
- ▶ More than 8,000 combinations possible
- ▶ Universally usable by different filter inserts
- ▶ Different compressor types with consistent vacuums
- ▶ All components suitable for 3-shift operation
- ▶ Plug&Play by integrated control possible



Options

- Exhaust module
 - Policing filter (H-14)
 - Active coal
 - Exhaust socket to connect the pipe system possible (depending on device version)
 - Control can be integrated

- Filter module
 - Filter stages possible in almost any filter class
 - Combined filter media possible
 - Revision door for simplified filter change possible
 - Connection of different pipe systems

- Removal/mobility module
 - Moving (for sizes 1, 1.2 and 3)
 - Different removal versions on demand

- Other
 - Direct connection or collection elements possible (extraction arms, extraction table)

Type	Condenser	Volume flow	Vacuum	Socket ø	Sizes (WxDxH)	Con-struction size	Weight	Order no.
	in kW/V/Hz	in m³/h (max.)	in Pa (max.)	in mm	in mm (approx.)	(BG)	in kg (approx.)	
ILA 500-125-1-1 F / 0.37 MD	0.37/400/500	750	1,450	125	450 x 650 x 1,825	1	96	ILA00500
ILA 700-180-1-1 F / 0.55 MD	0.55/400/50	1,500	1,610	140	450 x 650 x 1,825	1	96	ILA00700
ILA 1400-200-1-1 F / 1.1 MD	1.1/400/50	2,400	2,200	200	450 x 650 x 1,825	1	101	ILA01400-1
ILA 1400-200-2-1 F / 1.1 MD	1.1/400/50	2,400	2,200	200	650 x 800 x 2,325	2	145	ILA01400-2
ILA 2200-224-2-1 F / 2.2 MD	2.2/400/50	4,600	2,800	224	650 x 800 x 2,325	2	160	ILA02200
ILA 3300-250-2-1 F / 3.0 MD	3.0/400/50	5,200	3,100	250	650 x 800 x 2,325	2	160	ILA03300
ILA 4600-315-3-2 F / 4.0 MD	4.0/400/50	6,100	3,150	315	1,150 x 800 x 2,615	3	610	ILA04600
ILA 6200-355-3-2 F / 5.5 MD	5.5/400/50	8,100	3,400	355	1,150 x 800 x 2,615	3	655	ILA06200
ILA 7800-400-3-2 F / 7.5 MD	7.5/400/50	10,500	3,800	400	1,150 x 800 x 2,615	3	685	ILA07800
ILA 10,000-450-4-3 F / 11 MD	11/400/50	13,800	3,700	450	1,700 x 800 x 2,800	4	970	ILA10000
ILA 13,000-500-5-4 F / 15 MD	15/400/50	19,200	3,750	500	1,600 x 1,150 x 3,200	5	1110	ILA13000
ILA 15,000-560-6-6 F / 18.5 MD	18.5/400/50	24,700	3,500	560	1,700 x 1,600 x 3,400	6	1410	ILA15000

Industries

- Waste and recycling management
- Environmental technology
- Automotive
- Chemistry, pharmaceuticals, minerals, cosmetics
- Plastic, rubber processing and finishing industry
- Engineering
- Metal and iron
- Paper, tissue, cardboard
- Textile, leather, clothing

Processes

- Coating
- Bonding
- Polishing
- Casting
- Grinding



Extraction Arms Type APU

Product overview



Mist



Smoke



Dust

ULMATEC extraction arms are easy to handle and guarantee high flexibility.

The air-technically optimised and ergonomic extraction hood permits targeted collection of the medium.

Extraction arms are delivered with point extraction hood, polyurethane hose (heat-resilient up to 90° Celsius) and wall device holder by default.

Outer joints ensure a maximum volume flow at very low contamination.

Diameters can be chosen from 80 to 180 mm and total lengths from 2 to 8 metres, as well as many options.



APU 150-3-1 with attachment at the device



APU 150-8-1
with wall holder

7

Options

- Square hood
- Special hoods
- Floor standing device
- Filter fleece insert in extraction hood
- Start/stop automatic
- Lighting set
- Collection with self-carrying hose
- Design in stainless steel
- Design in according to ATEX

Your advantages at a glance

- ▶ Best suction force by outer joints
- ▶ Extraction hood for specific collection
- ▶ High-quality PU-connection hose
- ▶ Easy handling, high flexibility
- ▶ Longevity by use of gas pressure dampeners
- ▶ Different attachment options



Type -1
Round hood



Type -2
Flat hood



Type -3
Rectangular hood
with baffle plate

Extraction Arms Type APU



APU 150-4-3-1 with ground standing device



APU 150-4-4-1 with wall lining

Type	Extension	DN	Attachment option	Order-no.
	in metres	in mm		
APU 80-2-1	2	80	GWH, DHF, DHD, TIH, BOH	APU080021
APU 80-3-1	3	80	GWH, DHF, DHD, TIH, BOH	APU080031
APU 80-4-1	4	80	GWH, DHF, DHD, TIH, BOH	APU080041
APU 80-2-3-1	5	80	Wall attachment	APU080051
APU 80-3-3-1	6	80	Wall attachment	APU080061
APU 80-3-4-1	7	80	Wall attachment	APU080071
APU 80-4-4-1	8	80	Wall attachment	APU080081
APU 100-2-1	2	100	GWH, DHF, DHD, TIH, BOH	APU100021
APU 100-3-1	3	100	GWH, DHF, DHD, TIH, BOH	APU100031
APU 100-4-1	4	100	GWH, DHF, DHD, TIH, BOH	APU100041
APU 100-2-3-1	5	100	Wall attachment	APU100051
APU 100-3-3-1	6	100	Wall attachment	APU100061
APU 100-3-4-1	7	100	Wall attachment	APU100071
APU 100-4-4-1	8	100	Wall attachment	APU100081
APU 125-2-1	2	125	GWH, DHF, DHD, TIH, BOH	APU125021
APU 125-3-1	3	125	GWH, DHF, DHD, TIH, BOH	APU125031
APU 125-4-1	4	125	GWH, DHF, DHD, TIH, BOH	APU125041
APU 125-2-3-1	5	125	Wall attachment	APU125051
APU 125-3-3-1	6	125	Wall attachment	APU125061
APU 125-3-4-1	7	125	Wall attachment	APU125071
APU 125-4-4-1	8	125	Wall attachment	APU125081
APU 140-2-1	2	140	GWH, DHF, DHD, TIH, BOH	APU140021
APU 140-3-1	3	140	GWH, DHF, DHD, TIH, BOH	APU140031
APU 140-4-1	4	140	GWH, DHF, DHD, TIH, BOH	APU140041
APU 140-2-3-1	5	140	Wall attachment	APU140051

Type	Extension	DN	Attachment option	Order-no.
	in metres	in mm		
APU 140-3-3-1	6	140	Wall attachment	APU140061
APU 140-3-4-1	7	140	Wall attachment	APU140071
APU 140-4-4-1	8	140	Wall attachment	APU140081
APU 150-2-1	2	150	GWH, DHF, DHD, TIH, BOH	APU150021
APU 150-3-1	3	150	GWH, DHF, DHD, TIH, BOH	APU150031
APU 150-4-1	4	150	GWH, DHF, DHD, TIH, BOH	APU150041
APU 150-2-3-1	5	150	Wall attachment	APU150051
APU 150-3-3-1	6	150	Wall attachment	APU150061
APU 150-3-4-1	7	150	Wall attachment	APU150071
APU 150-4-4-1	8	150	Wall attachment	APU150081
APU 160-2-1	2	160	GWH, DHF, DHD, TIH, BOH	APU160021
APU 160-3-1	3	160	GWH, DHF, DHD, TIH, BOH	APU160031
APU 160-4-1	4	160	GWH, DHF, DHD, TIH, BOH	APU160041
APU 160-2-3-1	5	160	Wall attachment	APU160051
APU 160-3-3-1	6	160	Wall attachment	APU160061
APU 160-3-4-1	7	160	Wall attachment	APU160071
APU 160-4-4-1	8	160	Wall attachment	APU160081
APU 180-2-1	2	180	GWH, DHF, DHD, TIH, BOH	APU180021
APU 180-3-1	3	180	GWH, DHF, DHD, TIH, BOH	APU180031
APU 180-4-1	4	180	GWH, DHF, DHD, TIH, BOH	APU180041
APU 180-2-3-1	5	180	Wall attachment	APU180051
APU 180-3-3-1	6	180	Wall attachment	APU180061
APU 180-3-4-1	7	180	Wall attachment	APU180071
APU 180-4-4-1	8	180	Wall attachment	APU180081

GWH = device/wall holder
DEH = ceiling holder

TIH = table holder
BOH = ground standing holder



Device/wall holder
(Standard) **GWH**



Ceiling holder
DHF



Ceiling holder
DHD



Table holder
TIH



Ground standing holder
BOH

Product overview



Mist



Smoke



Dust



Chips

ULMATEC Extraction tables are ergonomically optimised and produced of stable steel sheet. Best air guidance ensures maximum collection of dust and smoke.

The extraction tables are produced in three standard designs:

- ATU = undertable extraction
- ATR = combination of undertable and rear wall extraction
- ATL = undertable extraction suitable for support of heavy loads up to 1.5 t

The modular build permits many options.



ATL 3000-224-2



ATR 2500-224-1 with wood support and sound muffling at the ceiling and side walls



ATR 2000-224-3 with wood support



ATR 1000-180-4 + ATU 1000-180-4 with plasma support



ATR 2000-224-1 with grid



ATR 3000-300-2 with plastic support

Extraction Tables Type ATU / ATR / ATL

Your advantages at a glance

- ▶ Diverse uses
- ▶ With rear wall attachment and folding side walls (optional)
- ▶ Direct extraction at the workplace
- ▶ Simple disposal via dust collection drawer
- ▶ Stable steel sheet construction
- ▶ Support of zinc-plated grid
- ▶ Extraction socket on the right and left possible



ATR-200-200-1

Type ATU

Type	Sizes (WxDxH)	Socket Ø	Necessary air volume	Extraction type	Support	Order no.
	in mm (approx.)	in mm	in m ³ /h			
ATU 1000	1,000 x 1,000 x 860	160	1,500	Undertable extraction	Grid	ATU1000
ATU 1500	1,500 x 1,000 x 860	180	1,800	Undertable extraction	Grid	ATU1500
ATU 2000	2,000 x 1,000 x 860	200	2,200	Undertable extraction	Grid	ATU2000
ATU 2500	2,500 x 1,000 x 860	224	2,500	Undertable extraction	Grid	ATU2500
ATU 3000	3,000 x 1,000 x 860	2x180	3,500	Undertable extraction	Grid	ATU3000

Type ATR

Type	Sizes (WxDxH)	Socket Ø	Necessary air volume	Extraction type	Support	Order no.
	in mm (approx.)	in mm	in m ³ /h			
ATR 1000	1,000 x 800 x 1,700	1x160 + 2x80	2,200	Undertable extraction / Rear wall extraction	Grid	ATR1000
ATR 1500	1,500 x 800 x 1,700	1x180 + 3x80	2,800	Undertable extraction / Rear wall extraction	Grid	ATR1500
ATR 2000	2,000 x 800 x 1,700	1x200 + 4x80	3,600	Undertable extraction / Rear wall extraction	Grid	ATR2000
ATR 2500	2,500 x 800 x 1,700	1x224 + 5x80	4,300	Undertable extraction / Rear wall extraction	Grid	ATR2500
ATR 3000	3,000 x 1,000 x 1,700	2x180 + 6x80	5,700	Undertable extraction / Rear wall extraction	Grid	ATR3000

Type ATL

Type	Sizes (WxDxH)	Socket Ø	Necessary air volume	Extraction type	Support	Order no.
	in mm (approx.)	in mm	in m ³ /h			
ATL 1500	1,500 x 1,000 x 920	2x125 - Ø 180	1,900	Undertable extraction	Grid	ATL1500
ATL 3000	3,000 x 1,100 x 920	4x125 - Ø 224	2,700	Undertable extraction	Grid	ATL3000

Your advantages at a glance

- ▶ Diverse uses
- ▶ Direct extraction at the workplace
- ▶ Stable steel sheet construction
- ▶ Support of zinc-plated grid (optionally different support possible)
- ▶ Extraction socket on the right and left possible
- ▶ Possible for heavy loads up to 1.5 t

Options

- Wood, plasma or plastic support
- Lighting set
- 230/400 Volt socket
- Rear wall with folding side walls
- Vice attachment
- Height adjustment
- With integrated filter and/or extraction blower
- Moving
- On/off switch for extraction system
- Side walls muffled



Option moving



Option on/off switch



Option lighting set



ATL 3000-224-2

Extraction Hoods Type AH



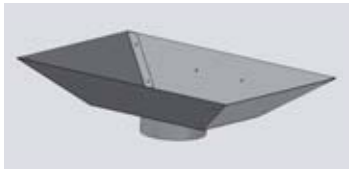
Upper hoods type AHO

are mostly used for rising smoke, running along on robot booms and for extraction in foundries.

By default we produce upper hoods with ring eyelets for suspension in the 500 mm-grid, e.g.:

- 500 x 1,000 mm
- 1,000 x 1,000 mm
- 1,000 x 1,500 mm
- etc.

Upper hoods can be laterally suspended with lamellae (see photograph).



Bottom hoods type AHU

are used when dust falls down or is to be extracted. Usually, this is the case at grinding machines, work tables, handover points, etc.

ULMATEC produces bottom hoods in all sizes, connection diameters and attachment options.

Send us a drawing or sketch. We will implement a suitable solution.



Side hoods type AHS

are produced as round or rectangular hoods by default.

Any diameter or square size can be implemented.

The hoods can either be produced open, with protective grids or baffle plates.

ULMATEC produces side hoods in all sizes, depending on application.



Floor cleaning set

Floor cleaning sets consist of 5 metres of PU suction hose, guide tube, pointed extraction nozzle and floor cleaning nozzle. The suction accessories are changed with a plug-in system.

Type	DN	Length	Order no.
	in mm	in mm	
BRS 50	50	5,000	BRS50
BRS 70	70	5,000	BRS70



Options

- Expansion of the collection range by extension of the suction hose
- Special hose for abrasive materials

Your advantages at a glance

- ▶ Longevity by use of PU suction hose
- ▶ Large collection area
- ▶ Easy handling by ergonomic guide tube
- ▶ Different collection nozzles for diverse use
- ▶ Simple replacement of the suction accessories by plug-in system

Suction nozzles

ULMATEC offers individual suction nozzles for direct connection to the suction hose as well:



Point extraction nozzle of metal
(Order no. PDM)



Brush nozzle of plastic
(Order no. BDK)



Joint nozzle of metal
(Order no. FDM)



Connection piece of plastic to connect the suction nozzles to the suction hose
(Order no. VSK)

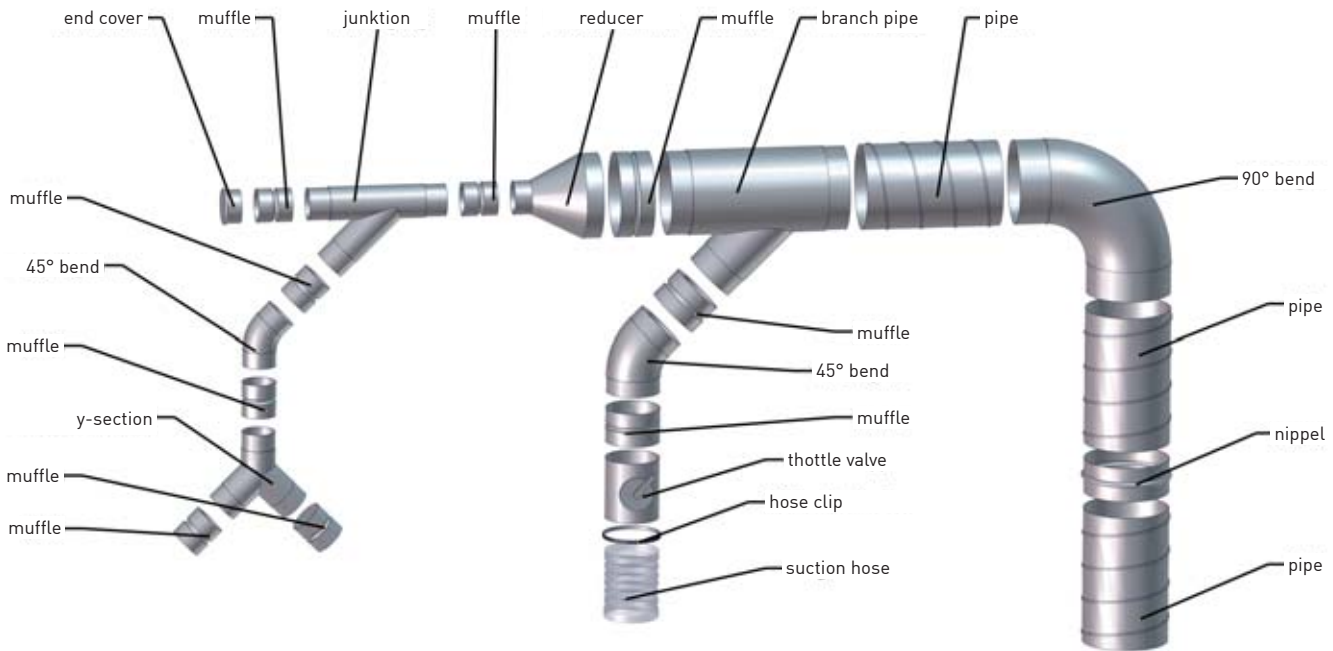


Joint nozzle of plastic
(Order no. FDK)

Pipe, channel, hose and attachment systems

Pipe, channel and hose systems are used to connect the individual elements of an extraction system with each other (collection - pre-separator - filter - compressor).

To meet the many demands on the market, our product range is very comprehensive in the areas of pipe, channel and hose systems.



Pipe systems



Pipe systems are delivered and installed by ULMATEC in the following designs:

- coiled folded pipes
- longitudinally folded pipes
- longitudinally welded pipes
- smooth pipes
- pipes with knurl
- flanged pipes

Of course, we supply the right form and connection parts for the individual pipe systems as well, such as:

- Bends
- Muffle
- Nippels
- Y-section
- Throttle valves
- Butterfly valves (manually and electro-pneumatically)
- gate valve
- Reductions
- Branches etc.

Channel systems



Straight channels, formed pieces or blow-out devices – ULMATEC delivers the right part for you and will install it on request.

The design of sheet thickness, radius and size of the channel parts is according to the technical requirements and the local situation.

You will receive standard parts according to DIN and channel parts specifically adjusted to space demand.

Ask our experts about the channel system best for you.

Hose systems



To meet the diverse uses and industry-specific requirements, ULMATEC delivers suction and transport hoses in different designs, such as:

- abrasion-proof
- electrically conductive
- flame-retardant
- food-grade
- heat-resistant
- chemical resilience
- heavy and light-weight design

Extraction hoses are produced in all DIN standard diameters of 50 – 450 mm and connected by our installers on request by default.

Of course, we also deliver the matching connection pieces.

Attachment Systems



ULMATEC uses only approved materials tested according to DIN for pipe and channel installation.

Starting from the hose clamp, through the pipe clamp, to the ceiling suspension with T-carriers, we supply systems by Hilti, Mefa etc. by default to ensure your safety.

If you desire a different system, we can, of course, provide this as well and use it for our installation at your site.

Our experienced team will gladly be available to you if you have any questions.

Product overview

ULMATEC produces a large selection of pre-separation systems such as cyclone pre-separators, material pre-separators, baffle-plate pre-separators and water pre-separators.

Pre-separators are used to separate goods with coarse dust from fine dust. On the other hand, pre-separators have upstream filter systems to protect them from abrasive materials or sparks.

Cyclone Pre-Separators Type ZVA



Dust



Granulate



Chips



Liquid

Cyclone pre-separators are tangentially connected and separate dust, chips, liquid and granulate from the extracted air by centrifugal force.

Furthermore, they can be used as separators for abrasive materials and for spark protection of the main filter system.

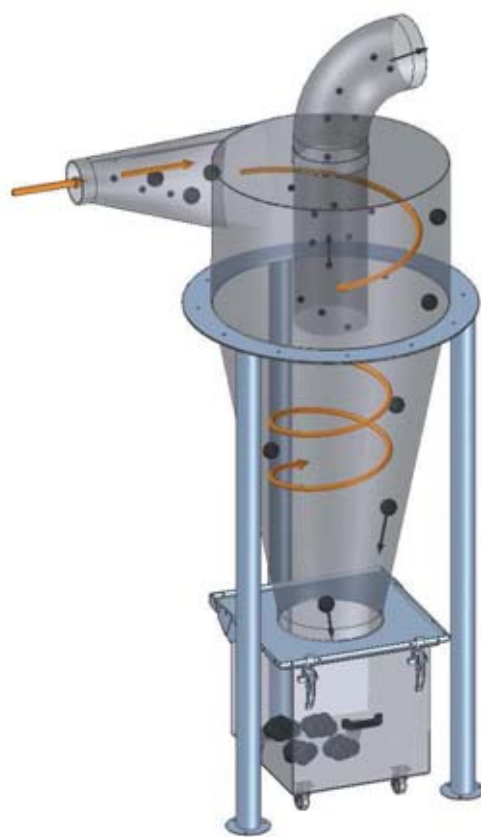
Cyclone pre-separators can be equipped with standard containers as well as with conveyor and removal elements in case of large dust volumes (see page 74-75).



Cyclone separator ZVA-140 with removal slider



Cyclone separator ZVA with deduster IEP and Big-Bag removal



Function drawing cyclone separator

Type	Extraction socket \varnothing	Exit socket \varnothing	Cyclone \varnothing	Container size	Cyclone height	Order no.
	in mm (outside)	in mm (outside)	in mm	in litres	in mm	
ZVA-50	50	100	400	50	1,040	ZVA050
ZVA-70	70	140	550	50	1,340	ZVA070
ZVA-100	100	160	750	50	1,590	ZVA100
ZVA-125	125	200	900	50	1,840	ZVA125
ZVA-140	140	224	950	50	1,990	ZVA140
ZVA-150	150	250	1,000	50	2,140	ZVA150
ZVA-160	160	250	1,000	50	2,140	ZVA160
ZVA-180	180	280	1,150	50	2,290	ZVA180
ZVA-200	200	300	1,200	50	2,440	ZVA200
ZVA-224	224	355	1,400	50	2,840	ZVA224
ZVA-250	250	400	1,600	130	3,620	ZVA250
ZVA-280	280	450	1,850	130	4,120	ZVA280
ZVA-300	300	450	2,010	130	4,320	ZVA300
ZVA-315	315	500	2,110	130	4,520	ZVA315
ZVA-355	355	560	2,310	130	5,020	ZVA355
ZVA-400	400	600	2,560	130	5,520	ZVA400
ZVA-450	450	630	2,760	130	6,020	ZVA450

Cyclone Pre-Separators Type ZVM



Dust



Granulate



Chips



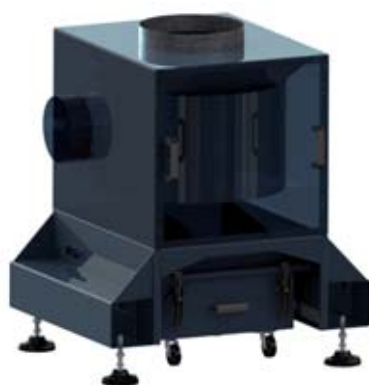
Smoke

Cyclone pre-separators of type ZVM are produced modularly in 13 performance sizes. They can be adjusted for nearly any application need.

The tangential entry rotates the air. It can be used as material or spark pre-separator.

The separated material is removed in standard containers (50l – BG2 / 80l – BG3). Use of the best insertion sheet permits disposal into a dust collection bag.

ZVM cyclone pre-separators can be used stationarily at extraction systems as well as mobile as pre-separators of mobile extraction systems.



ZVM-224

Type	Extraction socket ø	Exit socket ø	Dimensions (WxDxH)	Container size	Size	Order no.
	in mm (outside)	in mm (outside)	in mm (approx.)	in litres	(BG)	
ZVM-80	80	100	970 x 800 x 1,080	50	2	ZVM080
ZVM-100	100	140	970 x 800 x 1,080	50	2	ZVM100
ZVM-124	124	160	970 x 800 x 1,080	50	2	ZVM124
ZVM-140	140	200	970 x 800 x 1,080	50	2	ZVM140
ZVM-150	150	224	970 x 800 x 1,080	50	2	ZVM150
ZVM-180	180	250	970 x 800 x 1,080	50	2	ZVM180
ZVM-200	200	250	970 x 800 x 1,080	50	2	ZVM200
ZVM-224	224	280	970 x 800 x 1,080	50	2	ZVM224
ZVM-250	250	300	1,470 x 800 x 1,380	80	3	ZVM250
ZVM-280	280	355	1,470 x 800 x 1,380	80	3	ZVM280
ZVM-300	300	400	1,470 x 800 x 1,380	80	3	ZVM300
ZVM-315	315	450	1,470 x 800 x 1,380	80	3	ZVM315
ZVM-355	355	450	1,470 x 800 x 1,380	80	3	ZVM355

Material Pre-Separators Type MVA



Dust



Granulate



Chips

Material pre-separators work according to the principle of gravity. The air is sucked into the pre-separator and the sucked-in medium drops down by the reduction of the suction speed in the enlarged space. The air is then sucked on to the filter unit contrary to the dust direction. Material pre-separators are mostly used when large amounts of dust must be extracted from material with high bulk weight.



Type	Extraction socket \varnothing in mm	max. Air volume	Size	Dimensions WxDxH in mm (approx.)	Container size in litres (approx.)	Order no.
MVA - 80	80	300	1	650 x 550 x 1,150	30	MVA080
MVA - 100	100	500	2	970 x 800 x 1,150	50	MVA100
MVA - 160	180	1,500	2	970 x 800 x 1,150	50	MVA160
MVA - 200	200	2,000	3	1,470 x 800 x 1,200	80	MVA200
MVA - 250	250	3,000	4	1,470 x 800 x 1,765	80	MVA250
MVA - 280	280	3,500	4	1,470 x 800 x 1,765	80	MVA315

Other sizes on request

Baffle Plate Pre-Separators Type PVA



Dust



Granulate



Chips

Baffle plate pre-separators by ULMATEC are produced with a pre-separator area and a baffle plate against which media sucked in are hurled at a high speed. Dust and chips are thus rerouted, which leads to pre-separation.

Baffle plate pre-separators are also used to protect filters from abrasive and sharp-edged extracted goods.



Type	Extraction socket \varnothing in mm	max. Air volume	Size	Dimensions WxDxH in mm (approx.)	Container size in litres (approx.)	Order no.
PVA - 80	80	400	1	650 x 550 x 800	30	PVA080
PVA - 100	100	650	2	970 x 800 x 1,150	50	PVA100
PVA - 180	180	2,000	2	970 x 800 x 1,150	50	PVA180
PVA - 250	250	4,000	3	1,470 x 800 x 1,200	80	PVA250
PVA - 315	315	6,000	3	1,470 x 800 x 1,765	80	PVA315
PVA - 355	355	8,000	3	1,470 x 800 x 1,765	80	PVA355

Other sizes on request

Water Pre-Separators Type WVA



Smoke



Dust

Water pre-separators by ULMATEC work according to the whirling principle. The dust is bound by whirling with the water and drops down into a sludge bucket. Subsequent drop separators bind water particles in the air into drops that also fall down. For water pre-separators, observe that consistent air volumes are extracted and that a water connection is necessary for operation.



Type	Extraction socket \varnothing in mm	max. Air volume	Size	Dimensions WxDxH in mm (approx.)	Container size in litres (approx.)	Order no.
WVA - 50	50	150	1	450x550x800	40	WVA050
WVA - 70	70	300	1	450x550x800	40	WVA070
WVA - 100	100	650	2	650x800x950	95	WVA100
WVA - 140	180	1,200	2	650x800x950	95	WVA140
WVA - 150	250	1,400	2	650x800x1,150	95	WVA150
WVA - 180	315	2,000	2	650x800x1,150	95	WVA180

Other sizes on request

Filter Units Type FE

Product overview



Smoke



Dust



Granulate



Chips

Filter units by ULMATEC are used in finishing processes where smoke, dust, chips or granulate arises.

Depending on application, filter units are used between the pre-separator and condenser as part of an extraction system.

The selection filter unit is selected based on the medium to be extracted.

Filter units are produced as dry (types FEP and FES), cyclone (type FEZ) or wet units (type FEN) and produced on request and according to demand up to 100,000 m³/h.

ULMATEC also produces special filter units that are planned and produced depending on their application demand.



Filter unit FEP 320-16-8
with lateral condenser MRG 37 KW



Filter unit
FEP 320-32-8
(consisting of
2 x FEP 160-16-8)

Industries

- Waste and recycling management, environmental technology
- Automotive
- Chemistry, pharmaceuticals, minerals, cosmetics
- Print shop and book binding
- Wood processing and finishing industry
- Plastic, rubber processing and finishing industry
- Engineering
- Metal and iron
- Food and luxury goods
- Optics, medicine, dental
- Paper, tissue, cardboard
- Stones & earths, construction materials, glass, ceramics
- Textile, leather, clothing
- Other

Processes

- Bottling, filling, refilling
- Coating
- Turning
- Angle grinding
- Casting
- Laser-cutting
- Mixing
- Polishing
- Sawing
- Grinding
- Separating/cutting
- Welding
- Blasting
- Chopping
- Other

Filter Units Type FEP and FES

Series FEP



Smoke



Dust



Granulate



Chips

Filter units FEP are produced modularly in eight sizes equipped with permanent filters. A filter unit is part of an extraction system and connected to a separately placed compressor.

Permanent filters of dust class "M" ensure long service lives and low operating costs. Different filters make it possible to extract nearly any medium.

Cleaning takes place manually, with rotation cleaning or according to the jet pulse procedure, depending on design.

Collected dusts are removed into a mobile dust collection container.

Optionally, other conveyor and removal elements can be connected to the filter units (see pages 74-75).

Your advantages at a glance

- ▶ Low resistances permit high extraction output
- ▶ Low operating costs by cleanable permanent filters of the dust class "M" (99.98%)
- ▶ Minimum filter application by integrated pre-separator
- ▶ Many optional and expansion options by modular build
- ▶ Simple emptying by movable dust collection container
- ▶ Indoor and outdoor setup possible by high-quality powder coating (from BG 3 onwards)
- ▶ All components suitable for 3-shift operation
- ▶ Stable steel sheet construction

Type	Socket Ø	Filter area	Sizes (WxDxH)	Size	Weight	Order no.
	in mm	in m ²	in mm (approx.)	(BG)	in kg (approx.)	
FEP 3-2-1	100	3	650 x 550 x 650	1	42	FEP003021
FEP 8-1-2	150	8	970 x 800 x 965	2	78	FEP008012
FEP 15-2-2	150	15	970 x 800 x 965	2	86	FEP015022
FEP 20-2-2	200	20	970 x 800 x 1,115	2	92	FEP020022
FEP 20-2-3	224	20	1,470 x 800 x 1,580	3	170	FEP020023
FEP 40-2-3	315	40	1,470 x 800 x 1,580	3	240	FEP040023
FEP 40-4-4	315	40	1,455 x 1,040 x 2,400	4	230	FEP040044
FEP 60-6-5	355	60	1,455 x 1,455 x 2,600	5	330	FEP060065
FEP 80-4-4	355	80	1,455 x 1,040 x 2,400	4	310	FEP080044
FEP 90-9-6	450	90	1,870 x 1,455 x 2,600	6	420	FEP090096
FEP 120-6-5	450	120	1,455 x 1,455 x 2,600	5	430	FEP120065
FEP 120-12-7	500	120	1,870 x 1,870 x 2,960	7	570	FEP120127
FEP 160-16-8	560	160	2,285 x 1,870 x 2,960	8	630	FEP160168
FEP 180-9-6	560	180	1,870 x 1,455 x 2,600	6	640	FEP180096
FEP 240-12-7	630	240	1,870 x 1,870 x 2,960	7	710	FEP240127
FEP 320-16-8	710	320	2,285 x 1,870 x 2,960	8	840	FEP320168

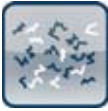
Series FES



Dust



Granulate



Chips

Filter units FES are produced modularly in eight sizes equipped with hose filters. A filter unit is part of an extraction system and connected to a separately placed compressor. Permanent filters of dust class "M" ensure long service lives and low operating costs. Different filters make it possible to extract nearly any medium. Cleaning takes place manually, or according to the jet pulse procedure, depending on design. Collected dusts are removed into a mobile dust collection container. Optionally, other conveyor and removal elements can be connected to the filter units (see pages 74-75).

Your advantages at a glance

- ▶ Low resistances permit high extraction output
- ▶ Low operating costs by cleanable permanent filters of the dust class "M" (99.98%)
- ▶ Minimum filter application by integrated pre-separator
- ▶ Many optional and expansion options by modular build
- ▶ Simple emptying by movable dust collection container
- ▶ Indoor and outdoor setup possible by high-quality powder coating (from BG 3 onwards)
- ▶ All components suitable for 3-shift operation
- ▶ Stable steel sheet construction

Type	Socket Ø	Filter area	Sizes (WxDxH)	Size	Weight	Order no.
	in mm	in m ²	in mm (approx.)	(BG)	in kg (approx.)	
FES 1-4-1	80	1	650 x 550 x 1,280	1	80	FES01041
FES 2-8-2	100	2	970 x 800 x 1,370	2	90	FES02082
FES 4-8-2	160	4	970 x 800 x 1,860	2	100	FES04082
FES 5-20-3	200	5	1,470 x 800 x 1,300	3	310	FES05203
FES 10-20-3	224	10	1,470 x 800 x 1,900	3	412	FES10203
FES 12-25-4	300	12.5	1,455 x 1,040 x 2,370	4	510	FES12254
FES 18-35-5	355	18	1,455 x 1,455 x 2,540	5	625	FES18355
FES 25-49-6	450	25	1,870 x 1,455 x 2,540	6	690	FES25496
FES 32-63-7	560	32	1,870 x 1,870 x 2,935	7	870	FES32637
FES 45-90-8	600	45	2,285 x 1,870 x 2,935	8	940	FES45908

Filter Units Type FEZ and FEN

Series FEZ



Smoke



Dust



Granulate



Chips

Cyclone filter units FEZ are produced modularly in six sizes.

By centrifugal force, the tangentially connected cyclone filter units separate dust, chips and granulate from the extracted air.

Cyclone filter units combine the cyclone principle with a cartridge filter. They are connected to a separately placed compressor.

Permanent filters of dust class "M" ensure long service lives and low operating costs. Different filters make it possible to extract nearly any medium. FEZ are equipped with filter cartridges by default - use of filter hoses is possible as well.

Cleaning takes place according to the jet pulse procedure.

Collected dusts are removed into a mobile dust collection container.

Optionally, other conveyor and removal elements can be connected to the filter units (see pages 74-75).

Your advantages at a glance

- ▶ High pre-separation effect by centrifugal force principle
- ▶ Suitable for high vacuum and large dust volumes
- ▶ Low operating costs by cleanable permanent filters of the dust class "M" (99.98%)
- ▶ Minimum filter application by cyclone principle
- ▶ Simple emptying by movable dust collection container
- ▶ Indoor and outdoor setup possible by high-quality powder coating
- ▶ All components suitable for 3-shift operation
- ▶ Stable steel sheet construction

Type	Socket ø	Max. air volume	Filter area	Cleaning type	Dimensions ø x Height	Container size	Order no.
	in mm	in m³/h	in m²		in mm (approx.)	in litres (approx.)	
FEZ-100	100	650	8	man. Rotabr./Jet	750 x 1,650	50	FEZ100
FEZ-140	140	1,250	15	Jet	950 x 1,750	50	FEZ140
FEZ-200	200	2,600	20	Jet	1,200 x 2,240	50	FEZ200
FEZ-250	250	3,200	40	Jet	1,600 x 3,560	130	FEZ250
FEZ-300	300	5,900	60	Jet	2,010 x 4,260	130	FEZ300
FEZ-400	400	10,100	80	Jet	2,560 x 5,460	130	FEZ400

Series FEN



Smoke



Dust



Granulate



Chips

Wet separator filter units FEN are produced modularly in six performance sizes. A filter unit is part of an extraction system and connected to a separately placed compressor. The multi-phase filtration ensures maximum separation at minimum water consumption. Collected dusts are washed out via a drain valve.

Your advantages at a glance

- ▶ High suction output by low resistances
- ▶ Maximum separation degree at very low water consumption by multi-phase filtration
- ▶ Simple emptying by drain valve and movable dust collection container (optional)
- ▶ All components suitable for 3-shift operation
- ▶ Stable steel sheet construction

Type	Socket Ø	Sizes (WxDxH)	Size	Weight	Order no.
	in mm	in mm (approx.)	(BG)	in kg (approx.)	
FEN 600-1	100	670 x 550 x 1,425	1	110	FEN00600011
FEN 1700-2	180	970 x 800 x 1,710	2	118	FEN01700030
FEN 4500-3	300	1,470 x 800 x 1,950	3	285	FEN04500055
FEN 6200-3	355	1,470 x 800 x 1,950	3	298	FEN06200075

Filter Units Type FOS

Series FOS



Mist



Liquid

Filter units of type FOS are produced in five performance sizes.

FOS filter units are used for nearly all applications where mist and steam are to be separated from oils, emulsions and general liquids.

By multiple filtration in three stages, the filter units ensure filtration up to 99.995 %.

Filtered liquids collected in the removal element are drained from the filter system via a drain valve. A siphon element can also be used to ensure continuous removal.

Optionally, the filter units can also be equipped with active coal after-filters to clean the filtered air of smells.

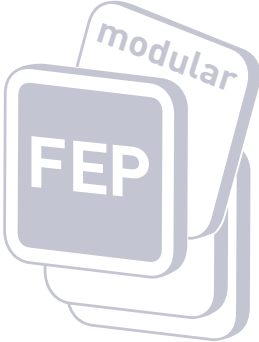
Your advantages at a glance

- ▶ Triple filtration for maximum separation
- ▶ Modular build permits maximum flexibility and adjustment to application
- ▶ High and even extraction output by use of deep filtration
- ▶ Simple emptying by drain valve or continuous liquid removal possible
- ▶ Stable steel sheet construction
- ▶ 3-shift operation possible

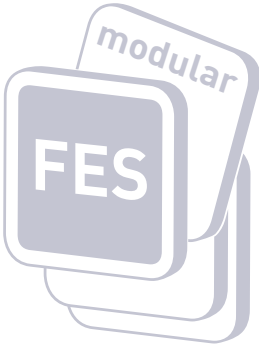
Type	Socket ø	Max. air volume	BG	Dimensions ø x height	Order no.
	in mm	in m ³ /h		in mm (approx.)	
FOS 500-1	125	750	1	450 x 650 x 1,310	FOS 500
FOS 700-1	140	1500	1	450 x 640 x 1,310	FOS 700
FOS 1400-2	200	2400	2	650 x 800 x 1,710	FOS 1400
FOS 2200-2	224	4600	2	650 x 800 x 1,710	FOS 2200
FOS 3300-2	250	5200	2	650 x 800 x 1,710	FOS 3300
FOS 4600-3	315	6100	3	1,150 x 800 x 1,800	FOS 4600
FOS 6200-3	355	8100	3	1,150 x 800 x 1,800	FOS 6200
FOS 7800-3	400	10,500	3	1,150 x 800 x 1,800	FOS 7800



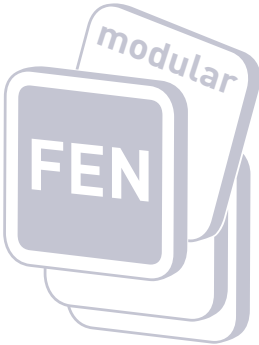
FEP 320-16-8



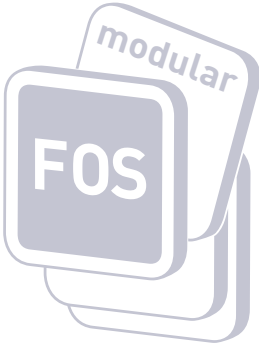
FES 100-100-8
with the adjacent
MRG 37 kW



FEN 4500-3



FOS 4600-3



10

Product overview



Cell wheel locks type ZRS

Cell wheel locks by ULMATEC are used when large amounts of free-flowing dusty goods are to be continually separated from a filter unit. This can remove the dusty goods e.g. into an on-site container or a flowing belt.

The cell wheel type is selected based on the poured goods grain, the wear and flow behaviour and the poured goods density.

ZRS are produced in different designs (number of chambers, chamber depth and chamber size) and versions (stiff rotor blades and/or vulkollan attachments).

ATEX cell wheel locks for dusts of dust class St2 can be delivered by ULMATEC as well.

Technical Data

In-/outlet Ø:	100, 150, 200, 250, 300, 350, 400
In-/outlet square:	200 x 200, 250 x 250, 250 x 400, 300 x 300, 300 x 450, 315 x 500, 400 x 400, 500, 630 x 630, other sizes on request
Conveyor outputs (m³/h):	0.2 - 450

Materials

Housing/bearing shields	Cast iron, cast stainless steel 1.4308,
Cell wheel	Construction steel, stainless steel, heat-resistant stainless steel
Sealing strips	Construction steel, stainless steel, heat-resistant stainless steel
Bearing	Outer roller bearings



Double pendulum flap type DPK

Double pendulum flaps by ULMATEC are used when powdery to middle-sized grain goods are to be continually separated from a filter unit. This can remove the dusty goods e.g. into an on-site container or a flowing belt.

ATEX double pendulum flaps for dusts and gases can be delivered by ULMATEC as well.

Technical Data

In-/outlet square:	200 x 200, 250 x 250, 300 x 300, 350 x 350, 400 x 400, 500 x 500, 600 x 600, other sizes on request
---------------------------	---

Design: Weight-charged, pneumatic, motor-powered

Materials

Housing	Construction steel, stainless steel, heat-resistant construction steel
Valve	Construction steel, stainless steel, heat-resistant construction steel Hardox, Naxtra

Product overview



Removal slider type ASS

Removal sliders by ULMATEC are used when dust- to mid-sized poured goods are to be locked or dosed.

The removal slider is selected based on the poured goods grain, the wear behaviour and the poured goods density.

ATEX removal sliders for dusts and gases can be delivered by ULMATEC as well.

Technical Data

In-/outlet Ø: 100, 150, 200, 250, 300, 350, 400, 500, 600

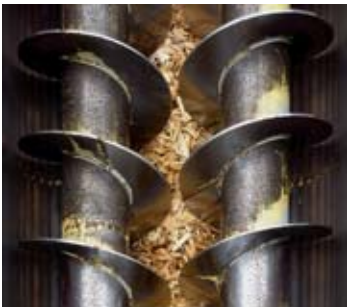
Materials

Housing/bearing shields Aluminium/cast iron/cast stainless steel

Slider sheet Stainless steel

Seal: Adjustable packing gland stuffing

Drive: Manually, pneumatically, motor-powered, hydraulic



Screw conveyor type SFR

Screw conveyors by ULMATEC are used when free-flowing dust is to be transported horizontally, diagonally or vertically.

The conveying direction is according to the speed, the inner and outer diameter, the inclination, the filling degree and the medium friction at the screw.

Conveyor screws can be used as stiff or flexible (bending) screws.

Technical Data

Diameter: 50, 80, 93, 135, 189, 248, 292, 370

Materials

Conveyor screw Steel/stainless steel

Housing Steel/stainless steel

Drive: Gear motor

Product overview



Mist



Smoke



Dust



Granulate



Chips

Compressors by ULMATEC are used to transport clean air or material.

In the condenser, the vacuum and volume flow are generated.

ULMATEC produces compressors in different designs, such as:

- Blowers (radial blower MRG, axial blower MAG)
- Suction turbines (STB)
- Side channel condensers (SKV)
- Rotating piston condensers (SKV)

Blowers are mostly used in the middle pressure range (MD).

Turbines, side channel compressors and rotary piston compressors produce a high vacuum and are used in the high-pressure area (HD).

Compressors are selected depending on application type of the extraction system and operating time (sporadic or permanent operation).



Radial blower MRG 0.55-3 kW (right- and left-ward rotation)



Radial blower MRG 18.5 kW
connected to filter unit

MRG 3.0 KW in muffler housing



Industries

- Waste and recycling management, environmental technology
- Automotive
- Chemistry, pharmaceuticals, minerals, cosmetics
- Print shop and book binding
- Wood processing and finishing industry
- Plastic, rubber processing and finishing industry
- Engineering
- Metal and iron
- Food and luxury goods
- Optics, medicine, dental
- Paper, tissue, cardboard
- Stones & earths, construction materials, glass, ceramics
- Textile, leather, clothing
- Other

Processes

- Bottling, filling, refilling
- Coating
- Turning
- Angle grinding
- Casting
- Laser-cutting
- Mixing
- Polishing
- Sawing
- Grinding
- Separating/cutting
- Welding
- Chopping
- Other

12

Product overview



Mist



Smoke

Blowers of ULMATEC are produced in two types:

- radial blower (MRG)
- axial blower (MAG)

ULMATEC blowers are running very smoothly because of the statically and dynamically balanced propeller. They are powered directly and suitably for 3-shift operation.

Radial blowers MRG are used to transport air or material in the middle pressure range. For this, open and closed propellers are used.

Radial blowers are installed in all of our products of the series IEP, IES, IRF and NAS.

Usually, radial blowers are already installed in a muffler housing when used in extraction systems. Additionally, it is sensible to install high power values or single blowers into a sound protection housing.

Axial blowers MAG are used in the low- to middle-pressure range. They serve pure air transport and thus venting of rooms or halls.

Optionally, it is possible to deliver blowers with wall holders, change the voltage to 230 Volt, increase the frequency to 60 Hz, produce the blowers in stainless steel and many other things.



Radial blower MRG 1.1 kW

Your advantages at a glance

- ▶ Maintenance-free by direct drive
- ▶ Best suction output by reverse-bend propeller blades (MRG)
- ▶ Rightward (standard) and leftward rotation possible
- ▶ Horizontal and vertical attachment possible by all-round screwing options
- ▶ Variable blow-out direction in 90° steps
- ▶ 50 and 60 Hz operation possible by multiple-frequency motor



Movable design as option



Radial blower in Sound insulation housing

Radial blower type MRG

Type	Volt	Hz	Volume flow	Vacuum	Extraction socket ø	Sizes (WxDxH)	Weight	Order no.
			in m ³ /h (max.)	in Pa (max.)	in mm	in mm (approx.)	in kg (approx.)	
MRG 0.55 kW	400	50	1,500	1,610	100	405 x 385 x 360	16	MRG0055
MRG 1.1 kW	400	50	2,400	2,200	150	560 x 560 x 410	22	MRG0110
MRG 2.2 kW	400	50	4,600	2,800	160	590 x 636 x 535	35	MRG0220
MRG 3.0 kW	400	50	5,200	3,100	200	590 x 636 x 535	42	MRG0300
MRG 4.0 kW	400	50	6,100	3,150	224	720 x 800 x 570	58	MRG0400
MRG 5.5 kW	400	50	8,100	3,400	300	720 x 800 x 645	75	MRG0550
MRG 7.5 kW	400	50	10,500	3,800	355	720 x 800 x 690	82	MRG0750

Other performance sizes on request

Axial blower type MAG

Type	Volt	Hz	Volume flow	Vacuum	Extraction socket ø	Sizes (WxDxH)	Weight	Order no.
			in m ³ /h (max.)	in Pa (max.)	in mm	in mm (approx.)	in kg (approx.)	
MAG 200	400	50	1,100	2,850	200	254 x 240 x 317	7	MAG200
MAG 250	400	50	2,100	2,850	250	304 x 300 x 372	8	MAG250
MAG 400	400	50	4,400	1,425	400	460 x 370 x 523	16	MAG400
MAG 500	400	50	9,100	1,450	500	565 x 370 x 624	26	MAG500
MAG 600	400	50	15,000	1,425	600	710 x 400 x 745	41	MAG600

Other performance sizes on request

Compressor type STB



Smoke



Dust



Granulate



Chips

Suction turbines STB by ULMATEC are delivered with high air volume and pressing in a kw output of 1.0 kW.

Because of their very good price/performance ratio, extraction turbines are installed as basic unit, e.g. in industrial extractors. The high speed also produces increased temperatures. Therefore, they are mostly used in sporadic operation.

Your advantages at a glance

- ▶ Best price/performance ratio

Compressor type SKV

Side channel compressors SKV by ULMATEC are pre-installed in extraction systems as well as delivered as standalone units in central extraction systems.

Side channel compressors SKV are produced in power sizes of 0.7 to 12.5 kW by default and up to 37 kW for large systems.

They are used in the high-pressure range. If small cross-sections are to be extracted and/or long pipe distances must be bridged, the side channel compressor is the right choice.

A safety valve delivered by ULMATEC by default protects side channel compressors from overheating and permits use in continuous operation.

Generally, side channel compressors are pre-installed in a muffler housing. In standardised systems, the muffler housing is already part of the device, while a separate muffler housing is included in the delivery in larger standalone units.



Side channel compressor

Your advantages at a glance

- ▶ Maintenance-free by direct drive
- ▶ Best extraction output from precisely matching processing
- ▶ Low-noise extraction operation
- ▶ High efficiency by maximum ratio of propeller to motor output
- ▶ Different designs available
- ▶ 50 and 60 Hz operation possible
- ▶ Safety valve included in the performance scope

Compressor type DKV

Rotary piston compressors DKV by ULMATEC are used as standalone units in central extraction systems or on request installed in standard devices.

Rotary piston compressors DKV are delivered with all power values from 11 to 600 kW.

The consistent and extremely high pressure range makes the main application field extraction systems where extraction takes place across very wide distances or no fluctuations must occur at direct machine extraction.

The accordingly sized safety valves delivered by ULMATEC by default protect rotary piston compressors from overheating and permit use in continuous operation.

Rotary piston compressors are always installed in a muffler housing - especially because of the high sound pressure level.

Your advantages at a glance

- ▶ Maintenance-free by direct drive
- ▶ Consistent volume flow, even at high pressure areas
- ▶ Best extraction output from precisely matching processing
- ▶ High efficiency by maximum ratio of propeller to motor output
- ▶ Different designs available
- ▶ 50 and 60 Hz operation possible
- ▶ Safety valve included in the performance scope

Side channel compressor type SKV

Type	Condenser	Volume flow	Vacuum	Weight	Order no.
	in kW/V/Hz	in m ³ /h (max.)	in Pa (max.)	in kg (approx.)	
SKV 0.7 kW	0.7/400/50	140	12,000	24	SKV007
SKV 1.3 kW	1.3/400/50	210	17,000	28	SKV013
SKV 2.2 kW	2.2/400/50	315	19,000	30	SKV022
SKV 3.0 kW	3.0/400/50	420	22,000	37	SKV030
SKV 4.0 kW	4.0/400/50	530	20,000	54	SKV040
SKV 5.5 kW	5.5/400/50	530	30,000	63	SKV055
SKV 8.5 kW	8.5/400/50	1,050	19,000	93	SKV085
SKV 12.5 kW	12.5/400/50	1,050	28,000	116	SKV125

Other sizes on request

Rotary piston compressor type DKV

Type	Condenser	Volume flow	Vacuum	Weight	Order no.
	in kW/V/Hz	in m ³ /h (max.)	in Pa (max.)	in kg (approx.)	
DKV 11 kW	11/400/50	510	40,000	500	DKV011
DKV 15 kW	15/400/50	840	40,000	550	DKV015
DKV 37 kW	37/400/50	1,860	40,000	1,130	DKV037
DKV 75 kW	75/400/50	3,720	40,000	2,450	DKV075
DKV 110 kW	110/400/50	5,270	40,000	3,310	DKV110

Other sizes on request

Every extraction or filter system requires a control. ULMATEC distinguishes between different standard types.

Motor control for the respective sizes (BG)

L-Line (Low) → BG 1 and 2

Function: Direct start-up (230 and 400 V)
Power values 1 – 3 kW
Smoothly adjustable



M-Line (Medium) → BG 1 - 3

Function: Direct start-up (400 V)
Power values 0.37 – 7.5 kW
On/off switch
Rotating direction monitoring

Option: can be expanded as W3 design

S-Line (Standard) → BG 4 - 8

Function: Direct or star-delta start-up (400 V) - depending on motor size
Power values 0.37 – 75 kW
Main switch with on/off toggle switch
External activation/deactivation possible
Operating and interference display
Power supply for filter control possible



H-Line (High) → BG 1 - 3

Function: 2-line display with condition display
Operating, alarm and service display
Timer with three on/off times
Access-protected menu control
Lag time adjustable
Control of frequency converter possible
Additional differential pressure module can be plugged on
Display of lag time active
Adjustable timer function for manual cleaning
Interruption of the lag time
Operating/service and lag time counter

Option: can be expanded as W3 design

U-Line (converter) → BG 1 - 8

Function: Frequenzumformer
Power values 0.37 – 75 kW
Main switch
On/off switch
Operating and interference display

Motor and filter controls



H-Line (High) → BG 1 - 3

Function: see H-Line (High) above
with filter cleaning control

Option: can be expanded as W3 design



K-Line (Comfort) → BG 1 - 8

Function: Direct or star-delta start-up (400 V)
 Power values 0.37 – 75 kW
 Main switch with additional on/off switch
 2-line display with condition display
 Differential-pressure monitoring
 External activation/deactivation possible
 Operating hours counter
 Operating, alarm and service display
 Filter cleaning control (RM-V-8)
 integrated via BUS line

Option: W3-design extensible
 Control of removal options extensible



P-Line (Premium) → BG 1 - 8

Function: Start-up via frequency converter
 Power values 0.37 – 75 kW
 Main switch with additional on/off switch
 2-line display with condition display
 Differential-pressure monitoring
 External activation/deactivation possible
 Operating hours counter
 Operating, alarm and service display
 Filter cleaning control (RM-V-8)
 integrated via BUS line

Option: W3-design extensible
 Vacuum control
 Control of removal options extensible



O-Line (OES) → BG 1 - 6

Function: Direct or star-delta start-up (400 V)
 Power values 0.37 – 18.5 kW
 Main switch with additional on/off switch
 Differential pressure monitoring, individual per filter level
 External activation/deactivation possible
 Operating and alarm display

Motor control with fill level monitoring



N-Line (wet separator) → BG 2 - 5

Function: Direct or star-delta start-up (400 V)
 Power values 0.37 – 15 kW
 Main switch with additional on/off toggle switch
 External activation/deactivation possible
 Operating hours counter
 Fill level monitoring (water)
 with solenoid valve control
 Operating, alarm and service display

Product overview

The claim of ULMATEC regarding the subject of sound protection does not end at compliance with statutory provisions but mostly serves protection of your employees and your environment.

To meet this demand, ULMATEC delivers and installs the following muffling systems:

- Pipe muffler
- Splitter silencer
- Machine housings
- Sound protection cabins

We offer you the entire service from general consulting on the subject of sound protection up to the expansion of already-installed systems.



Pipe muffler

Pipe mufflers are used to blow out cleaned exhaust into the room or outdoors downstream of the compressor unit after calming,

The default programme of our mufflers goes from DN 80 - 800 mm in all DIN diameters. They are produced as straight pipe and bent mufflers.

For the best muffling effect, we are already working with 100 mm insulation by default.

Of course, we can also produce the pipe mufflers according to your requests and wishes.

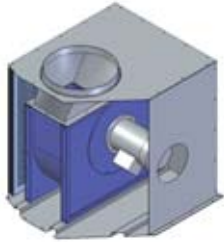


Splitter silencer

Splitter silencers are only designed according to demand, space and required air volume, and produced from order to order.

This way, ULMATEC ensures that the maximum possible sound protection is achieved.

Of course, we ensure compliance with the legal provisions and flow-technical basics in design and planning.



Machine enclosures

ULMATEC produces standardised machine enclosures for fans and other compressor types that are built as standalone systems.

These housings are designed for the respective application in size, fit and accessibility needed and produced according to the order.

This ensures that the customer will always get the best muffling.

Of course, we also produce machine enclosures for third-party machines such as presses, pressure machines, etc.

Enclosures are produced by ULMATEC with a material thickness of 100 mm (standard). Of course, lower, e.g., 60 or 80 mm, and larger material thicknesses of, e.g., 150 mm, can be implemented as well.

Describe your application to us, and we will present the solution.



Sound protection cabins

Especially when grinding, angle-cutting, drilling and milling, sound emissions that do not permit work without hearing protection arise.

To limit the range of emission and to protect your employees, ULMATEC offers different designs of muffler cabins.

They are produced accordingly for each order and application (room size, application, exposed elements, lighting and different access).

Of course, we deliver the best-sized extraction system for the muffler cabin as well.

To offer best sound protection with the right collection and extraction, we will gladly offer detailed consulting on the phone and on site.

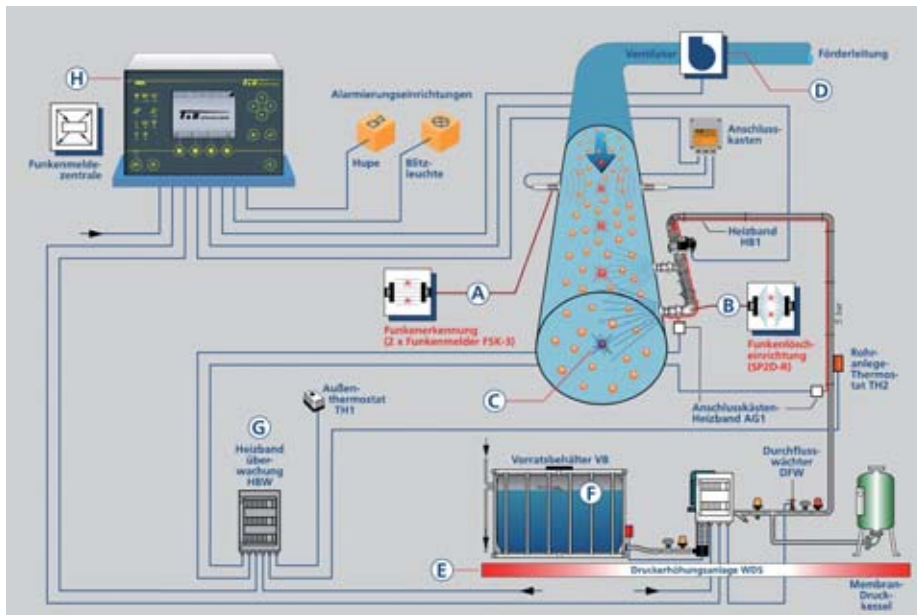
Fire protection

Our fire protection measures cover anything from recognition to extinguishing.

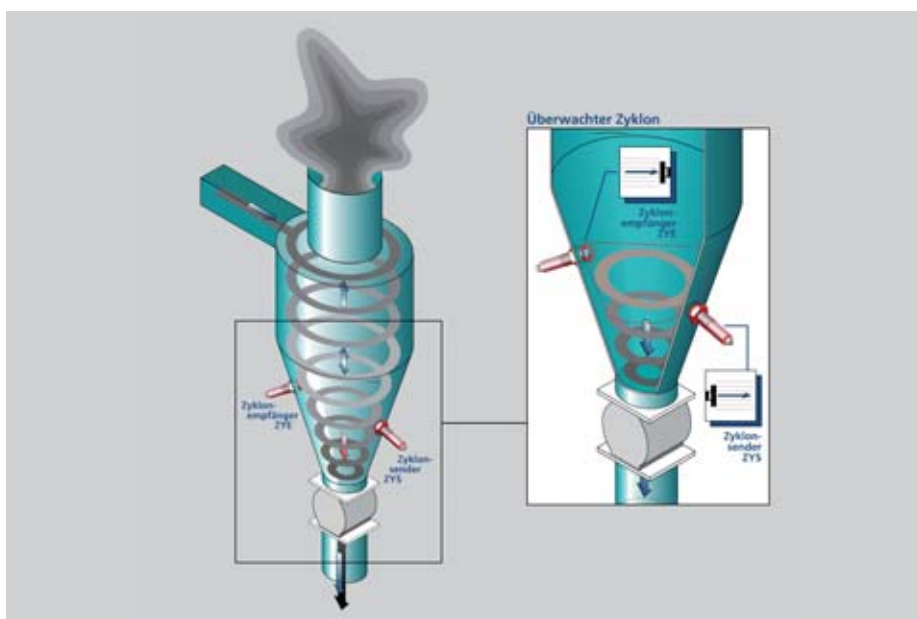
At recognition, possible ignition sources are found in time to eliminate them by extinguishing before entry into the filter chamber.

For this, we use tested and approved systems for spark and temperature detection.

The accordingly sized extinguishing devices - partially also with pressure increase - ensure maximum safety for your extraction system.



Function Description
Spark recognition system
with extinguishing device



Installation example for
cyclone monitoring

Product overview



Smoke

Hall extractions by ULMATEC are used when large components (e.g. steel carriers, ship construction, etc.) are welded.

There generally are the following hall extraction types:

- Layer venting
- Cross-flow venting (Push-Pull)
- Combination layers/cross-flow venting (Layer-blow ventilation)
- Filter tower

Selection of the chosen version and its size depend on the hall size, hall shape and usability at the customer's site.

Hall extractions generally serve to recirculate air, supporting the heat regulation of the hall. As an expansion, a heating system on gas or water basis by ULMATEC can be offered and installed for pure extraction.

Thus, every customer receives the solution best aligned with him.



Pipe system for hall extraction

Industries

- Automotive
- Engineering
- Metal and iron
- Public facilities

Processes

- Angle grinding
- Grinding
- Separating/cutting
- Welding

Layer ventilation

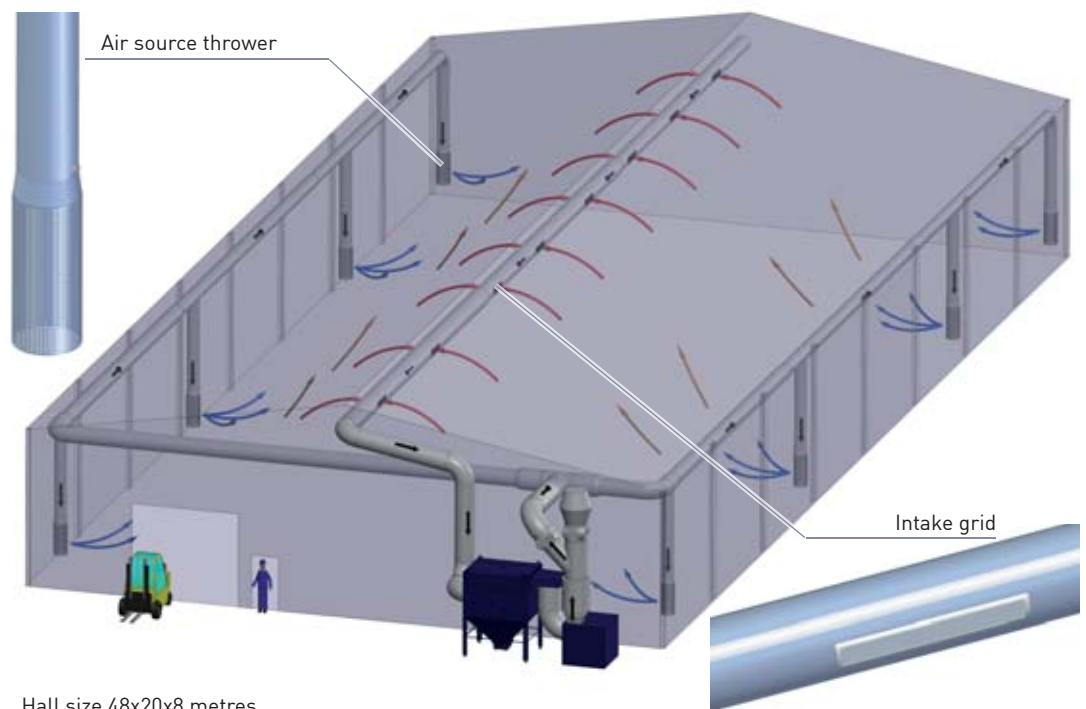


Smoke

At a hall extraction according to the principle of layer ventilation, the smoke is collected via a pipe system installed at the hall ceiling with intake grids and sucked into the extraction system, which is usually placed outdoors.

The dust is filtered from the air sucked in here. The cleaned air is either returned to the hall calmed via a muffler and the accordingly sized pipe system with air source throwers or blown off outside. Switching can be performed manually or smoothly via motor-powered shut-off flaps.

The extraction of hot air at the hall ceiling and the return in the lower area of the hall achieves an even temperature distribution. This achieves energy cost savings up to > 25%.



Hall size 48x20x8 metres

Your advantages at a glance

- ▶ Collection of the smoke right at the hall ceiling
- ▶ Even air inflow of the cleaned air in the working area
- ▶ Setup of the plant components outdoors possible (space savings in the hall)
- ▶ Support of the "stack effect"
- ▶ Energy costs savings
- ▶ Expansion with hall heating system possible

Cross-flow ventilation (Push-Pull)

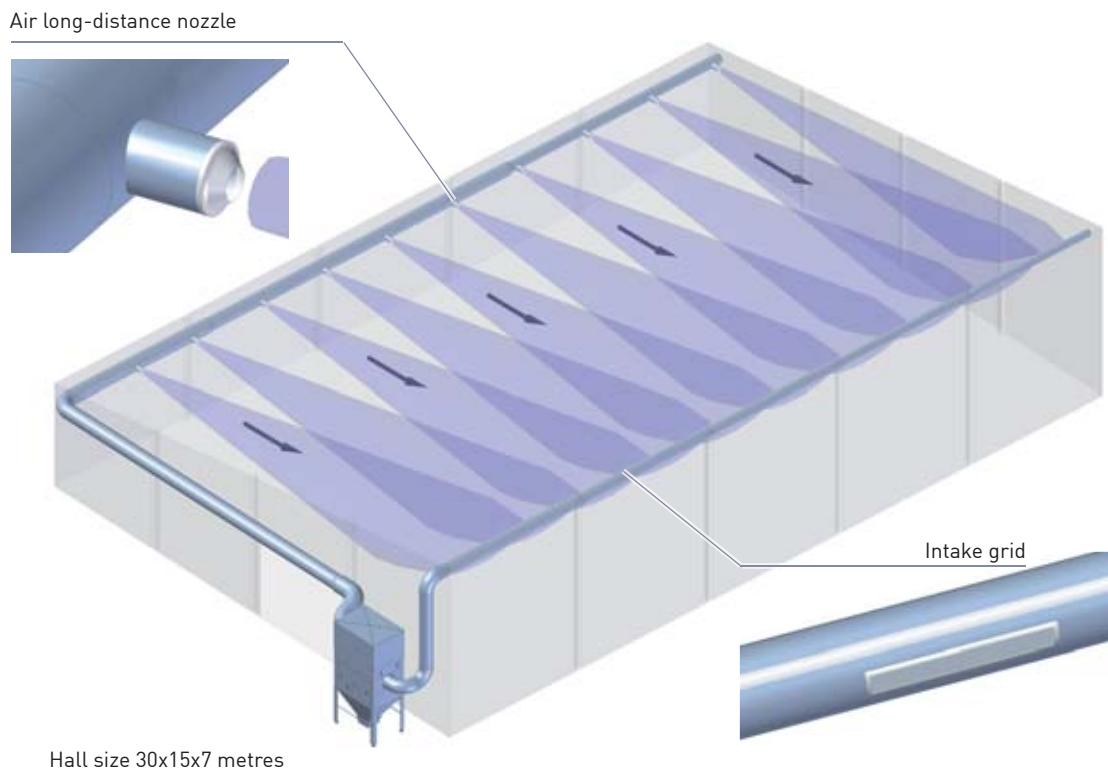


Smoke

At a hall extraction according to the principle of cross-flow ventilation, the smoke is collected via a pipe system installed at the side of the hall ceiling with intake grids and sucked into the extraction system, which is usually placed outdoors.

The dust is filtered from the air sucked in here. The cleaned air is blown in at the opposite side of the hall ceiling via a muffler and an accordingly sized pipe system with long-distance air nozzles.

The cross-flow leads to smoke collection as well as air mixture. These systems can be used on a hall width up to 25 m.



Your advantages at a glance

- ▶ No pipe placement necessary in the lower part of the hall
- ▶ Fast efficiency by air mixture
- ▶ Setup of the plant components outdoors possible (space savings in the hall)
- ▶ Can be installed in almost any hall.
- ▶ Can be combined with layer ventilation
- ▶ Expansion with hall heating system possible

Layer-Blow-Ventilation

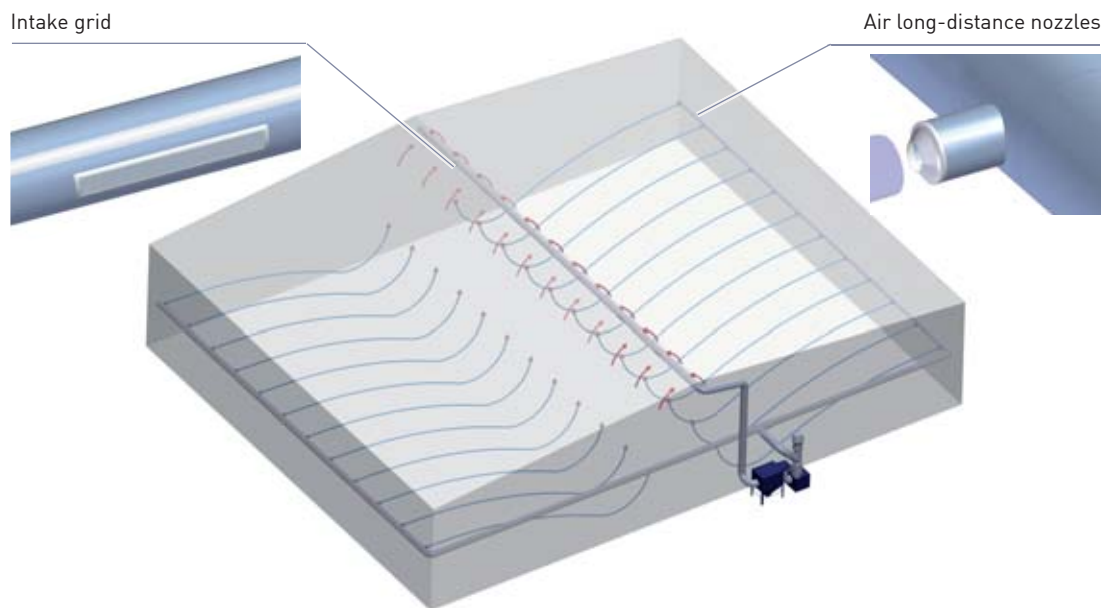


Smoke

Hall extractions according to the principle of the layer-blow ventilation are used in large halls with a span >25 metres. The principle of layer ventilation is combined with push-pull and mixing (diluting). All benefits of the individual systems (heating cost savings, low air change necessity, even air flows) can thus be presented and calculated in a system.

The smoke is collected via pipes installed at the hall ceiling with intake grids and sucked into the extraction system, which is usually placed outdoors. The filtered air is blown into the hall through the muffler and the accordingly sized pipe system, so that the inflow and the rising welding smoke not only produce the best extraction output, but also an additional thermal effect.

This technique makes it possible to extract even large halls with low energy introduction. The option of hall heating or use of a heat exchanger is present as well. The layer-blow ventilation thus is the most variable of the hall extraction systems.



Hall size 60x50x15 metres

Your advantages at a glance

- ▶ Best and even air distribution by long-distance nozzles
- ▶ Heating costs savings by collection of the smoke at the hall ceiling
- ▶ Maximum extraction output even at low air circulation
- ▶ Setup of the plant components outdoors possible (space savings in the hall)
- ▶ Expansion with hall heating system possible
- ▶ Largest possible cleaning effect with low drive outputs

Filter tower

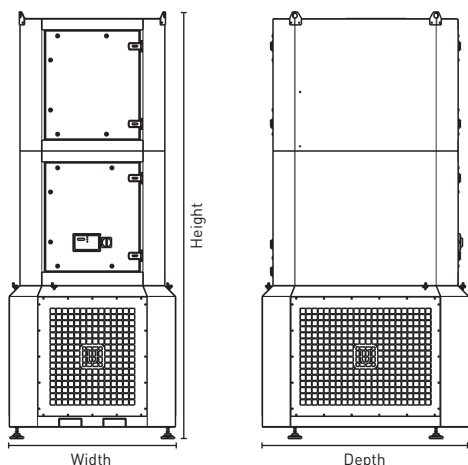


Smoke

Filter towers by ULMATEC are designed according to the principle of layer venting.

The smoke is collected in the upper area of the filter tower and thus where it collects in your hall as well. Adjustable intake grids permit setting the air volume so that extraction takes place where most smoke arises.

The cleaned air is returned calmed in the lower are of the filter tower, thus additionally supporting the principle of layer venting.



Intake opening
A flow-technically optimised intake nozzle ensures maximum recording

Blow-out openings
The cleaned air is calmed and returned to the room via large blow-out grids.



Type	Condenser	Volume flow	Filter area	Cleaning type	Mobility	Dimensions (WxDxH)	Weight	Order no.
		in m ³ /h (max.)	in m ²				in kg (approx.)	
FTR 5,000/3.0 MD	3.0 / 400	5,000	74	differential-pressure dependent	stationary/movable	1,500 x 1,115 x 3,200	550	FTR 5000
FTR 7,000/4.0 MD	4.0 / 400	7,000	74	differential-pressure dependent	stationary/movable	1,500 x 1,115 x 3,200	590	FTR 7000
FTR 9,000/5.5 MD	5.5 / 400	9,000	111	differential-pressure dependent	stationary/movable	1,500 x 1,530 x 3,600	680	FTR 9000
FTR 13,000/7.5 MD	7.5 / 400	13,000	111	differential-pressure dependent	stationary/movable	1,500 x 1,530 x 3,600	690	FTR 13000
FTR 18,000/11 MD	11 / 400	18,000	222	differential-pressure dependent	stationary/movable	1,900 x 1,530 x 3,600	780	FTR 18000
FTR 25,000/15 MD	15 / 400	25,000	222	differential-pressure dependent	stationary/movable	1,900 x 1,530 x 3,930	880	FTR 25000

Your advantages at a glance

- ▶ Delivery of the system ready for operation (ready for use at once)
- ▶ No pipe installation necessary
- ▶ Transport-capable and thus usable in different hall areas
- ▶ Option: Moving with integrated compressed air tank (no compressed air line necessary)
- ▶ Can be expanded with heating/cooling module



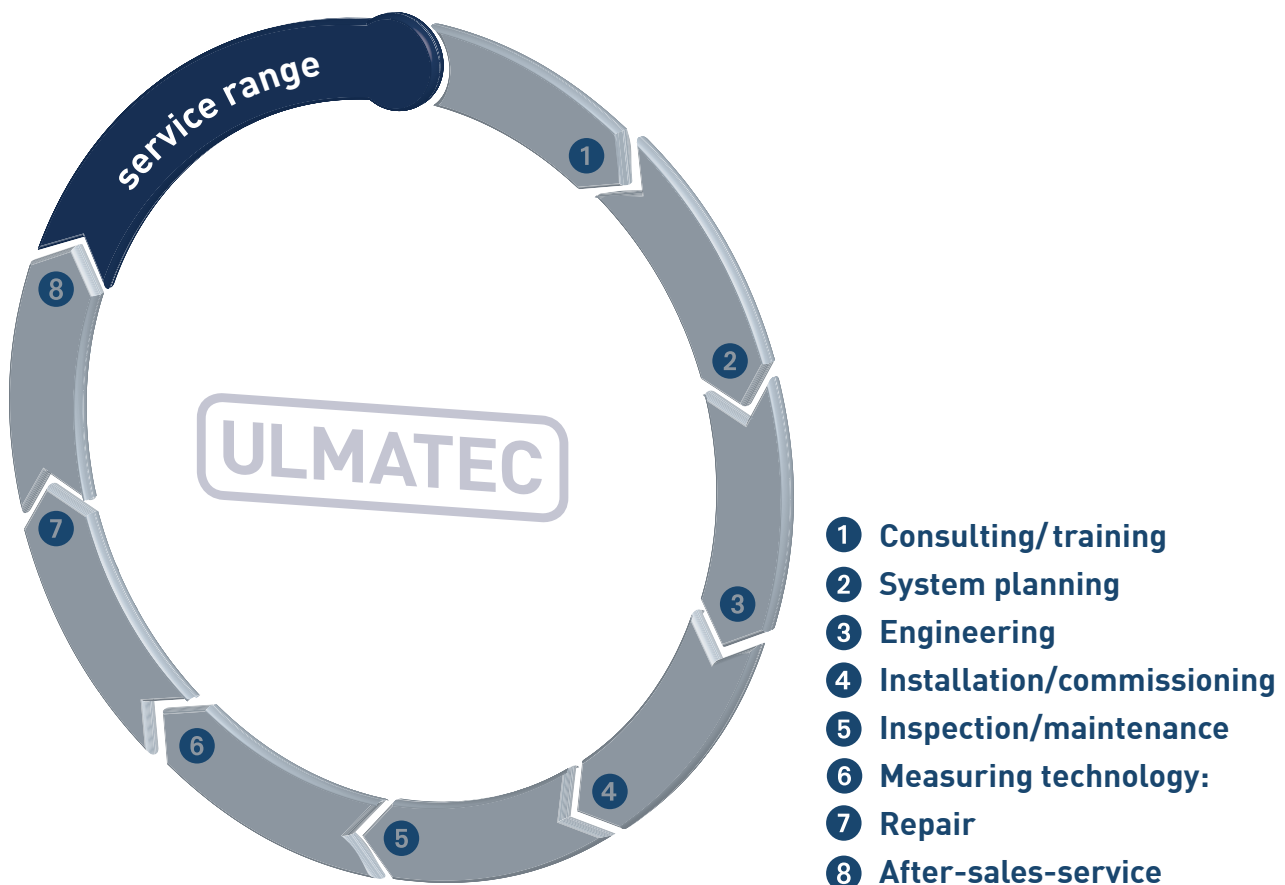
Service makes the difference

Our expert team supports you from the first consulting meeting to the other project phases to installation and acceptance.

Even after commissioning of the plant, our 24h-service ensures continuous availability to ensure function of your system around the clock.

ULMATEC performs regular customer service, dust and noise emission measurements.

We offer service in the entire area of extraction technology from a single source!



1 Consulting/training

To us, consulting means developing your best solution together.

After an initial demand analysis on the phone or on site, we will develop an individual offer for your use case under special consideration of the function of the overall system, the energy costs and of course the statutory requirements.

2 System planning

When planning a system, we place special value on qualified analysis.

In the different project and planning phases, we will consider your specific wishes and requirements to the overall system at all times.

3 Engineering

To avoid high transport costs, we offer complete engineering to our international customers.

This means production of different plant parts according to our drawings - but right on site.

We will support you throughout the project and help you - as desired - until commissioning with our competent installation and service team.

4 Installation/commissioning

ULMATEC has its own installation teams. With their use, interfaces are minimised and a smooth setup of your overall system is ensured.

Reliability and service are expected as a standard.

Our installers are trained in-house to give them knowledge of flow technology and are continually informed of novations and optimisation measures by our partners for the attachment systems.

5 Inspection/maintenance

Regular inspections and maintenance ensure permanent and smooth operation of your extraction system.

For maintenance work, our service installers review the condition of the system components installed at your site. This way, we ensure early recognition of any arising measures for repair.

Of course, smaller repair measures are performed at once to maintain further system operation. On demand

and on request, we shall draw up an order for you if further measures are necessary.

6 Measuring technology

ULMATEC offers emission-related services mostly for:

Dust emissions

We perform measurements for the values for gas condition (pressure, temperature, moisture and oxygen),

gas volume and concentration of hazardous substances, such as dust, org. C, SO₂, HCl, HF, formaldehyde, phenol, and CO on site.

Sound emissions

With modern equipment, we can perform emission measurements quickly and economically efficiently on site at your location. They form the basis to determine measures for muffling, sound-insulation and dampening of structure-borne noise.

7 Repair

We perform service and repair work on request at any time and demand both at extraction plants by ULMATEC and external makes.

In service, desired work such as filter change or system settings are performed and the overall system is rendered operational again.

Timely repair of defective plant parts avoids larger damage. Therefore, call our service team at the first sign.

8 After sales service

ULMATEC will support you even after the plant has been processed entirely.

We will gladly be available to answer any questions about your extraction system - even after the warranty time.

All spare and wear parts are provided on short notice to secure your operational safety. On request and agreement, we will also put things in stock to be able to react at once.

We want to gain you as a long-term business partner. Therefore, we will gladly keep you up to date on interesting novelties and technical further developments.

Customer and plant location:

Manufacturer of turning parts in Russia

Basic information:

Process: Grinding
 Material type: Mild Steel
 Kind of dust: Dust
 Air flow: ca. 5.500 m³/h
 Amount of dust: ca. 10 l/day

Applied components of equipment:

Survey: direct on the Kuhlmeier-grinding machine
 Pipe system: Folded spiral-seam pipe
 Pre-filter: Baffle plate pre-filter PVA 315
 Filter unit: IEP 80-4-4
 Compressor: Ventilator MRG 7,5 kW
 Discharge: Bin 50 Liter
 Control panel: Comfort-Line

Accomplished services:

Consulting
 Planning
 Installation
 Commissioning



Dust

Customer and plant location:

Automotiv Supplier in Czech Republic

Basic information:

Process: Welding
 Material type: Mild Steel
 Kind of dust: Smoke, Dust
 Air flow: ca. 24.000 m³/h
 Amount of dust: ca. 15 l/day

Applied components of equipment:

Survey: Welding cabin by customer
 Pipe system: Folded spiral-seam pipe
 Filter unit: FEP 320-16-8
 Compressor: Ventilator MRG 37 kW
 Discharge: Bin 50 Liter
 Control panel: Premium-Line with depression control + summer-/winter changeover
 Special: Radio detection an extinguishment

Accomplished services:

Consulting
 Planning
 Installation
 Commissioning



Smoke



Dust

Customer and plant location:

Automotive supplier in ZIP 51...

Basic information:

Process: Grinding, Polishing
 Material type: Aluminium
 Kind of dust: Dust, lint
 Air flow: ca. 18.500 m³/h
 Amount of dust: ca. 200 l/day

Applied components of equipment:

Survey: Direct machine extraction
 Pipe system: Folded spiral-seam piperohr (riveted), Steelpipe (flaning)
 Filter unit: FES 99-99-8
 Compressor: Ventilator, MRG 22 kW (ATEX)
 Control panel: Comfort-Line with ATEX-monitoring

Accomplished services:

Consulting
 Planning
 Installation/Commissioning



Dust

Customer and plant location:

Metal worker in ZIP 27...

Basic information:

Process: Welding, Grinding
 Material type: Steel, ST 37
 Kind of dust: Smoke, Dust
 Air flow: ca. 50.000 m³/h
 Amount of dust: ca. 100 l/week

Applied components of equipment:

Survey: Extraction desks by customers
 Pipe system: Pipe, Steel, flaning
 Filter unit: FEP 640-32-8
 Compressor: Ventilator, MRG 75 kW
 Control panel: Premium-Line (with FU)

Accomplished services:

Consulting
 Planning
 Installation/Commissioning



Smoke



Dust

Customer and plant location:

Manufacturer of solar module in ZIP 83...

Basic information:

Process: Sawing
 Material type: Aluminium
 Kind of dust: Chips
 Air flow: ca. 22.000 m³/h
 Amount of dust: ca. 5 m³/layer

Applied components of equipment:

Survey: Direct extraction, Sawing
 Pipe system: Pipe, Folded spiral-seam pipe (450 Meter)
 Filter unit: FEP 320-32-8
 Compressor: Ventilator, MRG 37 kW
 Control panel: Premium-Line (with FU)

Accomplished services:

Consulting
 Planning
 Installation/Commissioning



Chips

Customer and plant location:

Vehicle manufacturer in Poland

Basic information:

Process: Welding
 Material type: Mild steel
 Kind of dust: Smoke
 Air flow: ca. 12.000 m³/h
 Amount of dust: ca. 15 l/week

Applied components of equipment:

Survey: Exhaust booth by customer (Robot)
 Pipe system: Pipe, Folded spiral-seam pipe
 Filter unit: IRF 180-9-6
 Compressor: Ventilator, MRG 15 kW
 Control panel: Comfort-Line

Accomplished services:

Consulting
 Planning
 Installation/Commissioning



Smoke

Customer and plant location:

Public institution in ZIP 35...

Basic information:

Process: Welding, cutting
 Material type: Stainless steel
 Kind of dust: Welding fume, Dust
 Air flow: max. ca. 4.080 m³/h
 Amount of dust: ca. 10 l/week

Applied components of equipment:

Survey: Extraction arm +
 Plasma- Hand cutting desk
 Pipe system: Folded spiral-seam pipe
 Filter unit: IRF 20-2-3
 Compressor: Ventilator, MRG 3,0 kW
 Control panel: M-Line (directly start-up)

Accomplished services:

Consulting
 Planning
 Installation/Commissioning



Smoke



Dust

Customer and plant location:

Machine manufacturer in ZIP 48...

Basic information:

Process: Welding
 Material type: Mild Steel
 Kind of dust: Smoke
 Air flow: ca. 25.000 m³/h
 Amount of dust: ca. 30 l/week

Applied components of equipment:

Survey: Hall extraction (layer aeration)
 Pipe system: Pipe, Folded spiral-seam pipe
 Filter unit: FEP 320-16-8
 Compressor: Ventilator, MRG 37 kW
 Control panel: Premium-Line
 (with frequency changer)

Accomplished services:

Consulting
 Planning
 Installation/Commissioning



Smoke

Customer and plant location:

Textiles processor in ZIP 27...

Basic information:

Process: Coated, Parceling
Material type: Straw, coco, PP, Xylitol
Kind of dust: Dust, fibres
Air flow: ca. 7.500 m³/h
Amount of dust: ca. 5.000 l/week

Applied components of equipment:

Survey: Direct extraction machine
Pipe system: Pipe, steel, flanged,
folded spiral-seam
Filter unit: IES 56-56-6
Compressor: Ventilator, MRG 11 kW
Control panel: Premium-Line
(with FU)

Accomplished services:

Consulting
Planning



Dust

Customer and plant location:

Vehicle manufacturer in Poland

Basic information:

Process: Welding
Material type: Mild Steel
Kind of dust: Smoke
Air flow: ca. 25.000 m³/h
Amount of dust: ca. 30 l/week

Applied components of equipment:

Survey: Hall extraction
(layer aeration)
Pipe system: Pipe, Folded spiral-seam pipe
Filter unit: FEP 320-16-8
Compressor: Ventilator, MRG 37 kW
Control panel: Premium-Line
(with FU)

Accomplished services:

Consulting
Planning
Installation/Commissioning



Smoke



Customer and plant location:

Manufacturer of engine parts in ZIP 37...

Basic information:

Process: Turning + Grinding
 Material type: Steel + Stainless steel
 Kind of dust: Oil- + Emulsions exhalation
 Air flow: ca. 12.100 m³/h
 Amount of dust: ca. 3 l/day

Applied components of equipment:

Survey: Direct coverage of machine
 Pre-filter: OES 10.000-450 / 11 MD
 Pipe system: welded Jacob-Pipe system with flange seal
 Filter unit: Metal knitted,
 Bag filter
 Cassette filter
 Discharge: Bin mobile, ca. 50 l,
 with bleeder and level-control
 Compressor: Ventilator, 11 kW
 Control panel: O-Line

Accomplished services:

Consulting
 Planning
 Installation/Commissioning



Mist



Customer and plant location:

Metal- and steel processors in ZIP 88...

Basic information:

Process: Welding + Grinding
 Material type: Mild Steel
 Kind of dust: Welding fume
 Air flow: ca. 40.000 m³/h
 Amount of dust: ca. 100 l/week

Applied components of equipment:

Survey: Hall extraction
 (layer aeration)
 Pipe system: Folded spiral-seam pipe
 Filter unit: FEP 960-16-8
 Compressor: Ventilator, MRG 45 kW
 Control panel: Premium-Line
 (with frequency changer)

Accomplished services:

Consulting
 Planning
 Installation/Commissioning



Smoke



Customer and plant location:

Manufacturer machine cover in ZIP 89...

Basic information:

Process: Welding
 Material type: Mild Steel (ST 37)
 Kind of dust: Welding fume
 Duty point: ca. 6.250 Bm³/h bei 2.350 Pa.
 Production area: ca. 20.000 x 15.000 x 4.500 mm (LxWxH)

Applied components of equipment:

Survey: Hall extraction (Push-Pull)
 Pipe system: Folded spiral-seam pipe
 Filter unit: IRF 150-4-4
 Compressor: Ventilator, MRG 7,5 kW
 Control panel: Comfort-Line (With summer-/winter changeover)

Accomplished services:

Consulting
 Planning
 Installation/Commissioning



Smoke



Customer and plant location:

Technical Service Provider in ZIP 85...

Basic information:

Process: Welding + Grinding
 Material type: Steel
 Kind of dust: Smoke + Dust
 Air flow: ca. 2.500 m³/h
 Amount of dust: ca. 10 l/week

Applied components of equipment:

Survey: Extraction arms APU
 Pipe system: Folded spiral-seam pipe
 Filter unit: 2 x IEP 15-2-2
 Compressor: Ventilator, MRG 2,2 kW
 Discharge: Dust collection bin
 Control panel: H-Line

Accomplished services:

Consulting
 Planning
 Installation/Commissioning



Smoke



Dust



Customer and plant location:

Manufacturer of components made of concrete and reinforced concrete in ZIP 89...

Basic information:

Process: Grinding and Polishing
 Material type: Concrete
 Kind of dust: Dust
 Air flow: max. ca. 7.800 m³/h
 Amount of dust: ca. 10 l/day

Applied components of equipment:

Survey: Side hood with perforated plate
 Pipe system: Folded spiral-seam pipe
 Filter unit: IEP 80-4-4 / 7,5 MD
 Discharge: Dust collection bin 50 l
 Compressor: Ventilator, MRG-7,5 kW
 Control panel: K-Line, directly start-up

Accomplished services:

Consulting
 Planning
 Installation/Commissioning



Dust

Customer and plant location:

Machine manufacturer earth and road construction in ZIP 95...

Basic information:

Process: Turning
 Material type: Steel/Stainless steel
 Kind of dust: Mist
 Air flow: ca. 3.000 m³/h
 Amount of dust: minimal

Applied components of equipment:

Survey: Upper hood
 Pipe system: Folded spiral-seam pipe
 Filter unit: OES 3900-200/2,2 MD
 Discharge: Bin with bleeder
 Compressor: Ventilator, MRG-2,2 kW
 Control panel: M-Line

Accomplished services:

Consulting
 Planning
 Installation/Commissioning



Mist



Customer and plant location:

Manufacturer of devices and gate systems in ZIP 89...

Basic information:

Process: Sawing
 Material type: Wood and metal
 Kind of dust: Dust, Chips
 Air flow: max. 2.500 m³/h
 Amount of dust: ca. 10 l/day

Applied components of equipment:

Survey: Directly on the machine
 Pipe system: Folded spiral-seam pipe
 Filter unit: IEP 15-2-2/2,2 MD
 Pre-filter: 2 x PVA 180,
 separated by material
 Discharge: 2 dust collection bin à 50 l
 Compressor: Ventilator 2,2 kW
 Control panel: H-Line

Accomplished services:

Consulting
 Planning
 Installation/Commissioning



Dust



Chips

Customer and plant location:

Fitting shop in ZIP 89...

Basic information:

Process: Welding
 Material type: Steel
 Kind of dust: Smoke
 Air flow: max. ca. 8.450 m³/h
 Amount of dust: ca. 2 l/day

Applied components of equipment:

Survey: Hall extraction
 Pipe system: Folded spiral-seam pipe
 Filter unit: IRF 80-4-4
 Discharge: Dust collection bin
 Compressor: Ventilator, MRG 7,5 kW
 Control panel: Comfort-Line

Accomplished services:

Consulting
 Planning
 Commissioning



Smoke



Customer and plant location:

Manufacturer of springs, stampings and bent parts in ZIP 58...

Basic information:

Process: Grinding
 Material type: Mild Steel
 Kind of dust: Dust
 Air flow: ca. 15.400 m³/h
 Amount of dust: 200 l/day

Applied components of equipment:

Survey: Direct extraction for Federend machine
 Pipe system: Folded spiral-seam pipe
 Pre-filter: Spark pre-filter VAS
 Filter unit: IEP 240-12-7
 Compressor: Ventilator, MRG 15 kW (with sound protection enclosure)
 Control panel: Premium-Line (with frequency changer)

Accomplished services:

Consulting
 Planning
 Installation/Commissioning



Dust

Customer and plant location:

Manufacturer of plastic components in ZIP 48...

Basic information:

Process: Lasing
 Material type: div. Plastic
 Kind of dust: Dust/Smoke
 Air flow: ca. 11.400 m³/h
 Amount of dust: ca. 100 l/week

Applied components of equipment:

Survey: Primary coverage of machine
 Pipe system: Folded spiral-seam pipe
 Pre-filter: Cyclone interceptor ZA 125
 Discharge: dust collection bin (mobile)
 Control panel: NAS 6200
 Compressor: Ventilator, MRG 18,5 kW
 Control panel: S-Line

Accomplished services:

Consulting
 Planning
 Installation/Commissioning



Smoke



Dust

Customer and plant location:

Manufacturer of measuring and control devices in ZIP 60...

Basic information:

Process: Welding
 Material type: Steel, stainless steel
 Kind of dust: Smoke
 Air flow: ca. 20.000 m³/h
 Amount of dust: ca. 2 l/day

Applied components of equipment:

Survey: Extraction arms
 Pipe system: Folded spiral-seam pipe
 Filter unit: FEP 320-16-8
 Compressor: Ventilator, MRG 30
 Discharge: Dust collection bin (50 l) with Bleeder
 Control panel: Premium-Line 30 (with frequency changer)

Accomplished services:

Consulting
 Planning
 Installation/Commissioning



Smoke

Customer and plant location:

Recycling plant in ZIP 89...

Basic information:

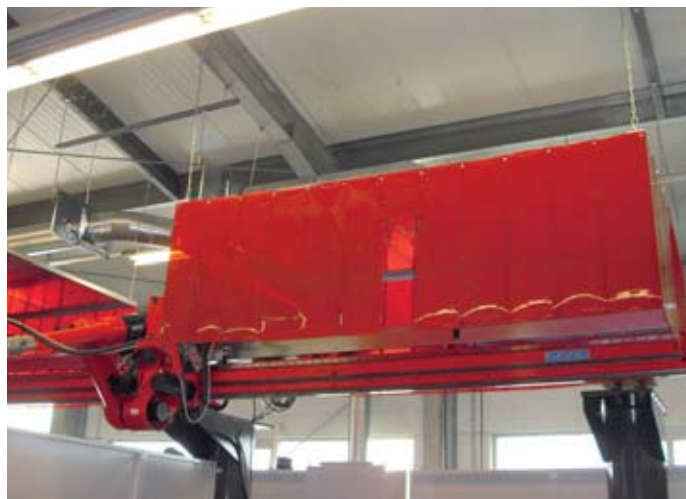
Process: cutting
 Material type: Steel
 Kind of dust: Dust/Smoke
 Air flow: ca. 40.000 m³/h
 Amount of dust: ca. 20 l/day

Applied components of equipment:

Survey: Upper hood
 Pipe system: Folded spiral-seam pipe
 Filter unit: External systems + Hall extraction
 Compressor: Ventilator, MRG 55 kW
 Control panel: P-Line

Accomplished services:

Consulting
 Planning
 Installation/Commissioning



Smoke



Dust

Customer and plant location:

Manufacturer of plastic seals in ZIP 89...

Basic information:

Process: Heating & burring with rubber
 Material type: Mild Steel
 Kind of dust: Smoke, Dust
 Air flow: ca. 12.400 m³/h
 Amount of dust: ca. 2 l/week

Applied components of equipment:

Survey: 4 Extraction arms APU 180-2-2
 Pipe system: Folded spiral-seam pipe
 Filter unit: FET 4-2-2
 Compressor: Ventilator MRG 7,5 kW
 Control panel: Premium-Line
 (with depression control)

Accomplished services:

Consulting
 Planning
 Installation/Commissioning



Smoke



Customer and plant location:

Manufacturer of cranes in Ireland

Basic information:

Process: Welding, Grinding
 Material type: Mild Steel
 Kind of dust: Welding fume
 Air flow: ca. 18.000 m³/h
 Fertigungsber.: ca. 50.000 x 60.000 x 22.500 mm
 (L x W x H)
 Amount of dust: ca. 20 l/week

Applied components of equipment:

Survey: Hall extraction
 (combined --- layer aeration +
 Push-Pull)
 Pipe system: Folded spiral-seam pipe
 Filter unit: 2 x IRF 180-9-6
 Compressor: 2 x Ventilator MRG, 22 kW
 Discharge: 50 Liter Bin
 Control panel: Comfort-Line with summer-/
 winter changeover
 Special: Air heater 150 G+

Accomplished services:

Consulting
 Planning
 Installation/Commissioning



Smoke

Customer and plant location:

Automotive supplier in ZIP 34...

Basic information:

Process: Hardening
 Kind of dust: Oil dust
 Air flow: ca. 25.000 m³/h

Applied components of equipment:

Survey: Extraction hoods directly on the machine
 Filter unit: 3x FOS 8.500-355-3
 Compressor: Ventilator MRGS 37 kW
 Control panel: Premium-Line with summer- / winter changeover
 Discharge: Bin 50 l with bleeder
 Pipe system: Folded spiral-seam and perforated plate pipe with gate valve, sound absorbers and Deflector hood

Accomplished services:

Consulting
 Planning
 Installation
 Commissioning



Mist



Customer and plant location:

Automotive supplier in ZIP 38...

Basic information:

Process: Polishing + Grinding
 Material type: Mild Steel
 Kind of dust: Dust + lint
 Air flow: ca. 4.080 m³/h
 Amount of dust: ca. 20 l/day

Applied components of equipment:

Survey: Direct extraction on the machine
 Filter unit: IES 4-8-2
 with integral Cyclone pre-filter
 Compressor: Ventilator MRGL 3,0 kW
 Control panel: Comfort-Line
 Discharge: 50 l-Dust collection bin
 Pipe system: Folded spiral-seam piperohr
 Special: Radio detection and -extinguishment
 With automatic construction cutoff and Alert (audible and optic)

Accomplished services:

Consulting Planning
 Installation Commissioning



Dust



Customer and plant location:

Automotive supplier in ZIP 49...

Basic information:

Process: Welding
 Material type: Mild Steel
 Kind of dust: Smoke, Dust
 Air flow: ca. 70.000 m³/h
 Amount of dust: ca. 20 l/week

Applied components of equipment:

Survey: directly on Robot housing
 Pipe system: Folded spiral-seam pipe
 Filter unit: FEP 940-48-8
 Compressor: Ventilator MRG S 75 kW
 Discharge: 3x Bin 50 Liter
 Control panel: Premium-Line with depression control
 An frequency converter,
 summer-/winter changeover
 Special: Spark detection and extinguishment

Accomplished services:

Consulting
 Planning
 Installation/Commissioning



Smoke

Customer and plant location:

Manufacturer of crane systems in ZIP 51...

Basic information:

Process: Welding
 Material type: Mild Steel
 Kind of dust: Welding fume
 Air flow: ca. 40.000 m³/h
 Amount of dust: ca. 2 l/day

Applied components of equipment:

Survey: Hall extraction
 „layer-blow-ventilation“
 Filter unit: FEP 600-24-8
 Discharge: 2 dust collection bin 50 l
 Compressor: Ventilator MRGS 45 kW
 Control panel: Premium-Line with
 Frequency converter and
 summer- / winter changeover
 Pipe system: Folded spiral-seam pipe with
 baffle silencer and
 deflector hood

Accomplished services:

Consulting
 Planning
 Installation
 Commissioning



Smoke

Customer and plant location:

Automotive supplier in ZIP 57...

Basic information:

Process: Grinding
 Material type: Mild Steel
 Kind of dust: Dust
 Air flow: ca. 6.500 m³/h

Applied components of equipment:

Survey: 2 extraction walls, mobile
 Filter unit: IEP 80-4-4 / 7,5 MD
 Compressor: Ventilator MRGL 7,5 kW
 Control panel: Comfort-Line with summer- / winter changeover
 Discharge: Bin 50 l
 Pipe system: Folded spiral-seam and perforated plate pipe with gate valve, sound absorbers and Deflector hood

Accomplished services:

Consulting
 Planning
 Installation
 Commissioning



Dust

Customer and plant location:

Manufacturer of lights in ZIP 59...

Basic information:

Process: Grinding, Polishing
 Material type: Mild Steel, copper
 Kind of dust: Dust of steel and copper
 Air flow: ca. 6.800 m³/h
 Amount of dust: ca. 30 – 40 l/day

Applied components of equipment:

Survey: directly on machine
 Filter unit: IES 26-56-6
 Discharge: Dust collection bin 50 l
 Compressor: Ventilator MRGL 5,5 kW
 Control panel: Comfort-Line
 Pipe system: Folded spiral-seam pipe, with pipe sound absorber 1.000 mm

Accomplished services:

Consulting
 Planning
 Installation
 Commissioning



Dust

Customer and plant location:

Manufacturer of print products in ZIP 61...

Basic information:

Process: Grinding + Welding
 Material type: Mild Steel
 Kind of dust: Dust + Smoke
 Air flow: ca. 8.450 m³/h
 Amount of dust: ca. 2 l/day

Applied components of equipment:

Survey: Extraction desk ATR 2500-250-1
 Extraction arms APU 150-3-1 (3x)
 Filter unit: IRF 80-4-4/7,5 MD
 Compressor: Ventilator MRGL 7,5 kW
 Control panel: Premium-Line with Depression-Regulation
 and Summer-/Winter-Case shift
 Discharge: 50 l-Dust collection bin
 Pipe system: Folded spiral-seam pipe with Isolation
 flaps Deflector hood, pipe sound absorber

Accomplished services:

Consulting
 Planning
 Installation
 Commissioning



Dust



Smoke



Customer and plant location:

Automotive supplier in ZIP 84...

Basic information:

Process: Welding, Grinding
 Material type: Mild Steel
 Kind of dust: Smoke, Dust
 Air flow: ca. 32.500 m³/h
 Amount of dust: ca. 5 l/week

Applied components of equipment:

Survey: Hall extraction -
 layer aeration
 Filter unit: FEP 320-16-8 with filter
 grade Police filter H-13
 Discharge: Dust collection bin 50 l
 Compressor: Ventilator MRGS 37 kW
 Control panel: Comfort-Line with Frequency
 converter, Depression control
 and Summer- / winter changeover

Accomplished services:

Consulting
 Planning
 Installation
 Commissioning



Smoke



Customer and plant location:

Vehicle manufacturer in ZIP 86...

Basic information:

Process: Welding
 Material type: Mild Steel, Stainless steel
 Kind of dust: Welding fume
 Abmessungen: ca. 120 x 60 x 11 m
 Air flow: ca. 96.000 m³/h
 Amount of dust: ca. 10 l/week

Applied components of equipment:

Survey: Hall extraction –
 „layer-blow-ventilation“
 Filter unit: 2 x FEP 400-16-8
 Discharge: Dust collection bin ca. 50 l
 Compressor: 2 x Ventilator MRGS 45kW
 Control panel: Comfort-Line with
 Frequency converter

Accomplished services:

Consulting
 Installation
 Commissioning



Smoke

Customer and plant location:

Plant manufacturer in ZIP 86...

Basic information:

Process: Milling
 Material type: CFK, GFK
 Kind of dust: Fine dust
 Air flow: ca. 6.890 m³/h
 Amount of dust: ca. ... l/day

Applied components of equipment:

Survey: 8 Side hoods
 Directly on the machine
 Filter unit: IEP 80-4-4 / 5,5 MD
 Compressor: Ventilator MRGL 5,5 kW
 Control panel: Comfort-Line
 Discharge: 50l-Bin
 Pipe system: Folded spiral-seam pipe with
 pneumatic Gate valve and pipe
 sound absorber

Accomplished services:

Consulting
 Planning
 Installation
 Commissioning



Dust

Customer and plant location:

Turned part manufacturer in ZIP 89...

Basic information:

Process: Milling
 Material type: Steel, stainless steel, Aluminium
 Kind of dust: Emulsion mist
 Air flow: ca. 1.200 m³/h
 Amount of dust: ca. 3 l/week

Applied components of equipment:

Survey: Direct coverage on the milling machine
 Filter unit: OES 1.400-200-1 / 1,1 MD
 Discharge: Siphon discharge for
 Continuous redaction in the
 machine center
 Compressor: Ventilator 1,1 kW
 Control panel: directly start-up

Accomplished services:

Consulting
 Installation
 Commissioning



Mist



Customer and plant location:

Crane manufacturer in ZIP 94...

Basic information:

Process: Welding
 Material type: Mild Steel
 Kind of dust: Smoke
 Air flow: ca. 15.000 m³/h
 Amount of dust: ca. 10 l/week

Applied components of equipment:

Survey: Hall extraction
 layer aeration
 Pipe system: Folded spiral-seam pipe
 Filter unit: IRF 240-12-7
 Compressor: Ventilator MRG 18,5 kW
 Discharge: Bin 50 Liter
 Control panel: Premium-Line with depression
 control and Frequency converter
 summer-/winter changeover

Accomplished services:

Consulting
 Planning
 Installation
 Commissioning



Smoke



Customer and plant location:

Plant manufacturer in ZIP 89...

Basic information:

Process: Welding
Material type: Mild Steel
Kind of dust: Welding fume
Air flow: ca. 4.080 m³/h
Amount of dust: ca. 2 l/week

Applied components of equipment:

Survey: Hanging stripes on welding robots
Filter unit: IRF 40-2-2/3,0 MD
Discharge: Dust collection bin ca. 25 l
Compressor: 2 x Ventilator 3,0 kW
Control panel: H-Line

Accomplished services:

Consulting
Installation
Commissioning



Smoke

Customer and plant location:

Crane systems manufacturer in ZIP 94...

Basic information:

Process: Welding
Material type: Mild Steel
Kind of dust: Smoke
Air flow: ca. 44.000 m³/h
Amount of dust: ca. 10 l/week

Applied components of equipment:

Survey: Hall extraction
(layer-blow-ventilation)
Filter unit: FEP 640-32-8
Compressor: Ventilator MRG 55 kW
Control panel: P-Line
Discharge: Bin (2x 50 l)

Accomplished services:

Consulting
Planning
Installation
Commissioning



Smoke

Customer and plant location:

Automobile manufacturer in ZIP 33...

Basic information:

Process: Welding and Laser inscribe
 Material type: Mild steel, stainless steel
 Kind of dust: Smoke
 Air flow: ca. 42.500 m³/h
 Amount of dust: ca. 10l/week

Applied components of equipment:

Survey: Extraction hood Typ AHO
 on Direct extraction on
 Laser machine
 Filter unit: FEP 400-16-8
 Compressor: Ventilator MRG 37 kW
 Control panel: K-Line
 Discharge: Bin 50 Liter

Accomplished services:

Consulting
 Planning
 Installation
 Commissioning



Smoke

Customer and plant location:

Automobile manufacturer in ZIP 34...

Basic information:

Process: Welding
 Material type: Steel, Stainless steel
 Air flow: ca. 31.000 m³/h
 Amount of dust: ca. 10l/week

Applied components of equipment:

Survey: Direct extraction on
 robot cabin
 Filter unit: FEP 300-12-7
 Compressor: Ventilator MRG 22 kW
 Control panel: K-Line mit S7-300
 Discharge: Bin 50 Liter

Accomplished services:

Consulting
 Planning



Smoke



Dust

Customer and plant location:

Automobile manufacturer in ZIP 34...

Basic information:

Process: Welding
 Material type: Stainless steel (V2A)
 Kind of dust: Smoke
 Air flow: ca. 32.500 m³/h
 Amount of dust: ca. 50 l/week

Applied components of equipment:

Survey: Direct extraction an
 Robotereinhausung
 Filter unit: FEP 608-16-8
 Compressor: Ventilator MRG-37 kW
 Control panel: Comfort-Line
 Discharge: 50 l-Dust collection bin
 Pipe system: Folded spiral-seam pipe
 Recirculating
 Air: control filter step H-13
 Sicherheit: Radio detection and
 -extinguishment

Accomplished services:

Consulting
 Planning
 Installation
 Commissioning



Smoke

Customer and plant location:

Automobile manufacturer in Czech Republic ZIP 46...

Basic information:

Process: Welding
 Material type: Mild Steel
 Kind of dust: Smoke
 Air flow: ca. 42.000 m³/h
 Amount of dust: ca. 100 l/week

Applied components of equipment:

Survey: Direct extraction on
 Robot cabin
 Filter unit: FEP 1.216-32-8
 Compressor: Ventilator MRG-45 kW
 Control panel: Premium-Line
 Discharge: 2 x 800 l
 Dust collection bin
 Pipe system: Folded spiral-seam pipe

Accomplished services:

Consulting
 Planning
 Installation
 Commissioning



Smoke

Customer and plant location:

Automobile manufacturer in Czech Republic ZIP 46...

Basic information:

Process: Welding
 Material type: Mild Steel
 Kind of dust: Smoke
 Air flow: ca. 32.000 m³/h
 Amount of dust: ca. 10 l/week

Applied components of equipment:

Survey: Extraction Hood
 Filter unit: IRF 320-16-8
 Compressor: Ventilator MRG-30 kW
 Control panel: Premium-Line
 Discharge: 50 l-Dust collection bin
 Pipe system: Folded spiral-seam pipe
 Sicherheit: Radio detection and
 -extinguishment

Accomplished services:

Consulting
 Planning
 Installation
 Commissioning



Smoke

Customer and plant location:

Machinery manufacturer in ZIP 88...

Basic information:

Process: Welding
 Material type: Mild Steel
 Air flow: ca. 12.000 m³/h
 Amount of dust: ca. 80 l/week

Applied components of equipment:

Survey: Extraction hood
 (installed above Robots)
 Filter unit: FEP 400-16-8
 Compressor: Ventilator MRG 30 kW
 Control panel: K-Line
 Discharge: dust collection bin by customer

Accomplished services:

Consulting
 Planning
 Installation
 Commissioning



Smoke



Dust



Customer and plant location:

Construction Company in ZIP 94...

Basic information:

Process: Welding
Material type: Mild Steel
Kind of dust: Smoke
Air flow: ca. 48.000 m³/h
Amount of dust: ca. 10 l/week

Applied components of equipment:

Survey: Hall extraction -
layer aeration
Filter unit: FEP 640-32-8
Compressor: Ventilator MRG-55 kW
Control panel: Premium-Line continuous
output regulator
Discharge: 2 x 50 l
Dust collection bin
Pipe system: Folded spiral-seam pipe

Accomplished services:

Consulting
Planning
Installation
Commissioning



Smoke

Customer and plant location:

Spring manufacturer in ZIP 58...

Basic information:

Process: Grinding
Material type: Mild Steel
Air flow: ca. 19.000 m³/h
Amount of dust: ca. 800 l/week

Applied components of equipment:

Survey: Direct extraction an
Clip Grinding machine
Filter unit: IEP 240-12-7
Compressor: Ventilator MRG 22 kW
Control panel: K-Line
Discharge: Cellular wheel sluice
Spezial: Integrated pre-filter
range with Spark
interceptor

Accomplished services:

Consulting
Planning
Installation
Commissioning



Dust

Customer and plant location:

Manufacturer of meat products in ZIP 99...

Basic information:

Process: Tape editing
 Material type: Sausages
 Air flow: ca. 1.650 m³/h
 Amount of dust: ca. 10l/week

Applied components of equipment:

Survey: Direct extraction
 Filter unit: IES 2-8-2 V4A
 Compressor: Ventilator MRG 1,1 kW
 Control panel: H-Line
 Discharge: Bin 50 Liter

Accomplished services:

Consulting
 Planning



Customer and plant location:

Manufacturer of crane systems in ZIP 51...

Basic information:

Process: Welding
 Material type: Mild Steel
 Kind of dust: Smoke
 Air flow: ca. 31.600 m³/h
 Amount of dust: ca. 5 l/week

Applied components of equipment:

Survey: Hall extraction
 „Layer-Blow-Ventilation“
 Filter unit: IRF 300-12-7
 Compressor: Ventilator MRG 22 kW
 Control panel: K-Line
 Discharge: Bin 80 Liter

Accomplished services:

Consulting
 Planning
 Installation
 Commissioning



Smoke

Customer and plant location:

Machinery manufacturer in ZIP 88...

Basic information:

Process: Turning, Milling, Grinding
 Material type: Steel, stainless steel
 Kind of dust: Exhalation
 Air flow: ca. 24.500 m³/h
 Amount of dust: ca. 3 l/week

Applied components of equipment:

Survey: Machine direct extraction
 Filter unit: OES 18.500-630-6
 Compressor: Ventilator MRGL-18,5 kW
 Control panel: O-Line
 Discharge: Bin with bleeder
 Pipe system: Steel pipe, seam heat sealing
 oil proof gaskets and
 clamping ring

Accomplished services:

Consulting
 Planning
 Installation
 Commissioning



Mist

Customer and plant location:

Manufacturer of crane systems in ZIP 94...

Basic information:

Process: Welding
 Material type: Mild Steel
 Kind of dust: Smoke
 Air flow: ca. 44.000 m³/h
 Amount of dust: ca. 10 l/week

Applied components of equipment:

Survey: Hall extraction
 (layer-blow-ventilation)
 Filter unit: FEP 640-32-8
 Compressor: Ventilator MRG 55 kW
 Control panel: P-Line
 Discharge: Bin (2x 50 l)

Accomplished services:

Consulting
 Planning
 Installation
 Commissioning



Smoke

Customer and plant location:

Manufacturer of laser welding machines ZIP 79...

Basic information:

Process: Welding
 Material type: Steel, stainless steel
 Kind of dust: Smoke
 Air flow: ca. 1.650 m³/h
 Amount of dust: ca. 3 l/week

Applied components of equipment:

Survey: Machine direct extraction
 Filter unit: IRF 40-2-2
 Compressor: Ventilator MRGL-1,1 kW
 Control panel: H-Line
 Discharge: Bin (50 l)

Accomplished services:

Consulting
 Planning



Smoke



Customer and plant location:

Manufacturer of test machines in ZIP 89...

Basic information:

Process: Welding + Grinding
 Material type: Mild Steel
 Kind of dust: Dust + Smoke
 Air flow: ca. 8.450 m³/h
 Amount of dust: ca. 2 l/week

Applied components of equipment:

Survey: 2 x Extraction desk
 ATR 2000-180-1
 Filter unit: IRF 80-4-4
 Compressor: Ventilator MRGL 7,5 kW
 Control panel: Comfort-Line
 Discharge: 50 l-Dust collection bin
 Pipe system: Folded spiral-seam pipe

Accomplished services:

Consulting
 Planning
 Installation
 Commissioning



Smoke



Dust

Customer and plant location:

Vehicle workshop in ZIP 86...

Basic information:

Process: Welding
 Material type: Stainless steel
 Kind of dust: Welding fume
 Amount of dust: ca. 4.500 m³/h

Applied components of equipment:

Survey: Hall extraction - layer aeration
 Filter unit: IRF 80-4-4
 Compressor: Ventilator MRGL 7,5 kW
 Control panel: Comfort-Line with summer- / winter changeover
 Discharge: Dust collection bin 50 l
 Pipe system: Folded spiral-seam and perforated plate pipe with gate valve, sound absorbers and Deflector hood

Accomplished services:

Consulting
 Planning
 Installation
 Commissioning



Smoke

Customer and plant location:

Metals manufacturer in ZIP 79...

Basic information:

Process: Welding
 Material type: Mild Steel
 Kind of dust: Smoke
 Air flow: ca. 44.000 m³/h
 Amount of dust: ca. 10 l/week

Applied components of equipment:

Survey: Hall extraction
 layer aeration / Push-Pull
 Filter unit: FEP 480-24-7
 Compressor: Ventilator MRG-55 kW
 Control panel: Comfort-Line
 Discharge: 2 x 50 l-
 Dust collection bin
 Pipe system: Folded spiral-seam pipe

Accomplished services:

Consulting
 Planning
 Installation
 Commissioning



Smoke

Customer and plant location:

Footwear producer in ZIP 16...

Basic information:

Process: Grinding
 Material type: Rubber, Leather
 Air flow: ca. 13.200 m³/h
 Amount of dust: ca. 80 l/week

Applied components of equipment:

Survey: Primary pressure with folded spiral-seam pipe system
 Filter unit: FES 18-40-5
 Compressor: Medium pressure MRG-11 MD
 Control panel: K-Line
 Discharge: Dust collection bin (ca. 80 l)

Accomplished services:

Consulting
 Planning
 Installation
 Commissioning



Dust

Customer and plant location:

Steel- and plant manufacturer in ZIP 94...

Basic information:

Process: (Plasma-)Steel cutting
 Material type: Mild Steel
 Kind of dust: Smoke, Dust
 Air flow: ca. 6.500 m³/h
 Amount of dust: ca. 30 l/day

Applied components of equipment:

Survey: Thermal cutting table BST 6000
 Pipe system: Folded spiral-seam pipe
 Pre-filter: Cyclone interceptor ZVA 300
 Filter unit: IRF 152-4-4
 Compressor: Ventilator MRG 7,5 kW
 Discharge: Bin 50 Liter with vacuum connection
 Control panel: Comfort-Line with summer-/ Winter changeover

Accomplished services:

Consulting
 Planning
 Installation
 Commissioning



Smoke



Dust

Customer and plant location:

Manufacturers of packing machines
in ZIP 32...

Basic information:

Process: Suction
Material type: Packages
Air flow: ca. 315 m³/h
Amount of dust: ca. 15 l/week

Applied components of equipment:

Survey: Suction hose
Filter unit: IST 1-1-1/2,2 HD V2A
Compressor: High pressure 2,2 kW
Control panel: H-Line
Discharge: Bin for liquids
with bleeder (ca. 50 l)

Accomplished services:

Consulting
Planning



Flüssigkeit



Customer and plant location:

Training workshop in ZIP 63...

Basic information:

Process: Welding
Material type: Mild Steel, stainless steel
Air flow: ca. 5.220 m³/h
Amount of dust: ca. 2 l/week

Applied components of equipment:

Survey : Extraction arm
3 x APU 150-2-2,
1 x APU 150-3-2
Filter Unit: IRF 40-4-3/4,0 MD
Compressor: Medium pressure
ventilator MRG 4,0 kW
Control panel: H-Line
Discharge: Dust collection bin (80 l)

Accomplished services:

Consulting
Planning
Installation
Commissioning



Smoke

Customer and plant location:

Manufacturer of splitting machines in Austria

Basic information:

Process: Welding
 Material type: Mild Steel
 Air flow: max. ca. 72.000 m³/h
 Amount of dust: ca. 2-5 l/day

Applied components of equipment:

Survey: Hall extraction
 „layer-blow-ventilation“
 Filter unit: FEP 400-16-8
 Compressor: Medium pressure
 MRGS-55 kW
 Control panel: P-Line with Hall purging
 operation and Pre-selection time
 Discharge: Dust collection bin (80l)

Accomplished services:

Consulting
 Planning
 Installation
 Commissioning



Customer and plant location:

Manufacturer of seals in ZIP 89...

Basic information:

Process: Sawing
 Material type: Rubber, plastic
 Air flow: ca. 8.450 m³/h
 Amount of dust: ca. 60 l/week

Applied components of equipment:

Survey: Primary coverage on machine
 tools + room air coverage
 Filter unit: IES 10-20-3/7,5 MD
 Compressor: Medium pressure radial fan
 MRG 7,5 kW
 Control panel: P-Line
 Discharge: Dust collection bin (80 l)

Accomplished services:

Consulting
 Planning
 Installation
 Commissioning



Customer and plant location:

Manufacturer of rubber profiles in ZIP 89...

Basic information:

Process: Smoke, exhalation
 Material type: rubber, plastic
 Air flow: ca. 8.450 m³/h
 Amount of dust: ca. 5 l/week

Applied components of equipment:

Survey: Upper hoodn
 Filter unit: OES 7800-355-3/7,5 MD
 Compressor: medium pressure radial fan MRG 7,5 kW
 Control panel: P-Line with volume flow control in subject to the blanks
 Discharge: bin with bleeder

Accomplished services:

Consulting
 Planning
 Installation
 Commissioning



Smoke



Mist

Customer and plant location:

Spring manufacturer in ZIP 58...

Basic information:

Process: exhaust bin
 Material type: Mild steel
 Air flow: ca. 4.080 m³/h
 Amount of dust: ca. 500 l/week

Applied components of equipment:

Survey: Conusextraction with motor regulating flap
 Filter unit: IRF 20-2-2
 Compressor: Medium pressure radial fan MRG 3 kW
 Control panel: K-Line
 Discharge: Big-Bag

Accomplished services:

Consulting
 Planning
 Installation
 Commissioning



Dust

Customer and plant location:

Machine builder in ZIP 88...

Basic information:

Process: Grinding
 Material type: Mild Steel
 Air flow: ca. 18.000 m³/h
 Amount of dust: ca. 50 l/week

Applied components of equipment:

Survey: Extraction hood
 (fixed and mobile)
 in Grinding cabin
 Filter unit: FEP 80-4-3 (2 Stück)
 Compressor: Medium pressure
 radial fan
 MRG 18,5 kW
 Control panel: P-Line
 Discharge: Dust collection bin
 (80 l – 2 pc)

Accomplished services:

Consulting
 Planning
 Installation
 Commissioning



Dust



Customer and plant location:

Machine builder in ZIP 89...

Basic information:

Process: Welding
 Material type: Mild Steel
 Air flow: ca. 14.100 m³/h
 Amount of dust: ca. 50 l/week

Applied components of equipment:

Survey: Hall extraction Push-Pull
 Filter unit: IRF 150-6-5
 Compressor: Medium pressure
 radial fan MRG 15 kW
 Control panel: P-Line
 Discharge: Dust collection bin (50 l)

Accomplished services:

Consulting
 Planning
 Installation
 Commissioning



Smoke

Customer and plant location:

Metalworker in ZIP 87...

Basic information:

Process: Welding
 Material type: Mild Steel
 Air flow: ca. 16.000 m³/h
 Amount of dust: ca. 50 l/week

Applied components of equipment:

Survey: Hall extraction
 layer aeration
 Filter unit: IRF 300-12-7
 Compressor: Medium pressure
 radial fan MRG 18,5 kW
 Control panel: P-Line
 Discharge: Dust collection bin (50 l)

Accomplished services:

Consulting
 Planning
 Installation
 Commissioning



Smoke

Customer and plant location:

Automotiv supplier in ZIP 92...

Basic information:

Process: Grinding, Milling
 Material type: HCT 600X, carbon silicide –
 Cork / mesh / resim
 Air flow: ca. 1.050 m³/h
 Amount of dust: ca. 50 l/week

Applied components of equipment:

Survey: Primary coverage
 Filter unit: IEP 15-2-2
 Compressor: High pressure compressor-
 side channel blower HDV 8,5 kW
 Control plan: K-Line
 Discharge: Dust collection bin (130 l)
 With charging level control
 Special: radio detection and radio extinguishing
 device; Touch pad zyclonmodule
 with water injection

Accomplished services:

Consulting
 Planning
 Installation
 Commissioning



Dust

Customer and plant location:

Automobile manufacturer in ZIP 85...

Basic information:

Process: Grinding
 Material type: Aluminium
 Air flow: ca. 10.500 m³/h
 Amount of dust: ca. 5 l/week

Applied components of equipment:

Survey: Extraction desk with Under- and Back board extraction
 Filter unit: IEP 80-4-3
 Compressor: medium pressure ventilator 7,5 kW
 Control panel: K-Line
 Discharge: Dust collection bin (80 l)
 Sonder: Table plat with extraction
 Hopper and hood for dust collection

Accomplished services:

Consulting
 Planning
 Installation
 Commissioning



Dust



Customer and plant location:

Manufacturer of seals in ZIP 89...

Basic information:

Process: Heating
 Material type: Rubber
 Air flow: ca. 7.500 m³/h
 Amount of dust: ca. 5 l/week

Applied components of equipment:

Surey: Primary coverage /
 Extraction arm
 Filter unit: OES 3.300 / 250 (2 pieces)
 Compressor: medium pressure ventilator 7,5 kW
 Control plan: P-Line
 Discharge: bin with bleeder
 Special: Refitting radio detection and radio extinguishing device on OES

Accomplished services:

Consulting
 Planning
 Installation
 Commissioning



Smoke

Customer and plant location:

Automobile manufacturer in ZIP 34...

Basic information:

Process: Turning/milling
 Material type: Steel
 Air flow: ca. 8.000 m³/h
 Amount of dust: ca. 40 l/week

Applied components of equipment:

Surety: Primary coverage
 Filter unit: OES 3300-250-2 (2 pieces)
 Compressor: medium pressure ventilator
 3,0 kW (2 pieces)
 Control plan: O-Line
 Discharge: Bin (50 l) with bleeder
 Special: motor isolation flap
 installed in pipe system
 (Constant regulating)

Accomplished services:

Consulting
 Planning
 Installation
 Commissioning



Chips

Customer and plant location:

Manufacturer of industrial gases in ZIP 85...

Basic information:

Process: Firing
 Material type: Ash
 Air flow: ca. 12.500 m³/h
 Amount of dust: ca. 5 l/month

Applied components of equipment:

Survey: Upper hood
 Filter unit: IES 18-40-5
 Compressor: Medium pressure
 ventilator 15,0 kW
 Pre-filter: Cyclone ZVA 315
 Control plan: K-Line
 Discharge: Bin(50 l)
 Special: Steelwork under Filter unit
 and cyclone motor isolation flap
 installed in pipe system
 (constant regulating)

Accomplished services:

Consulting
 Planning
 Installation
 Commissioning



Smoke

